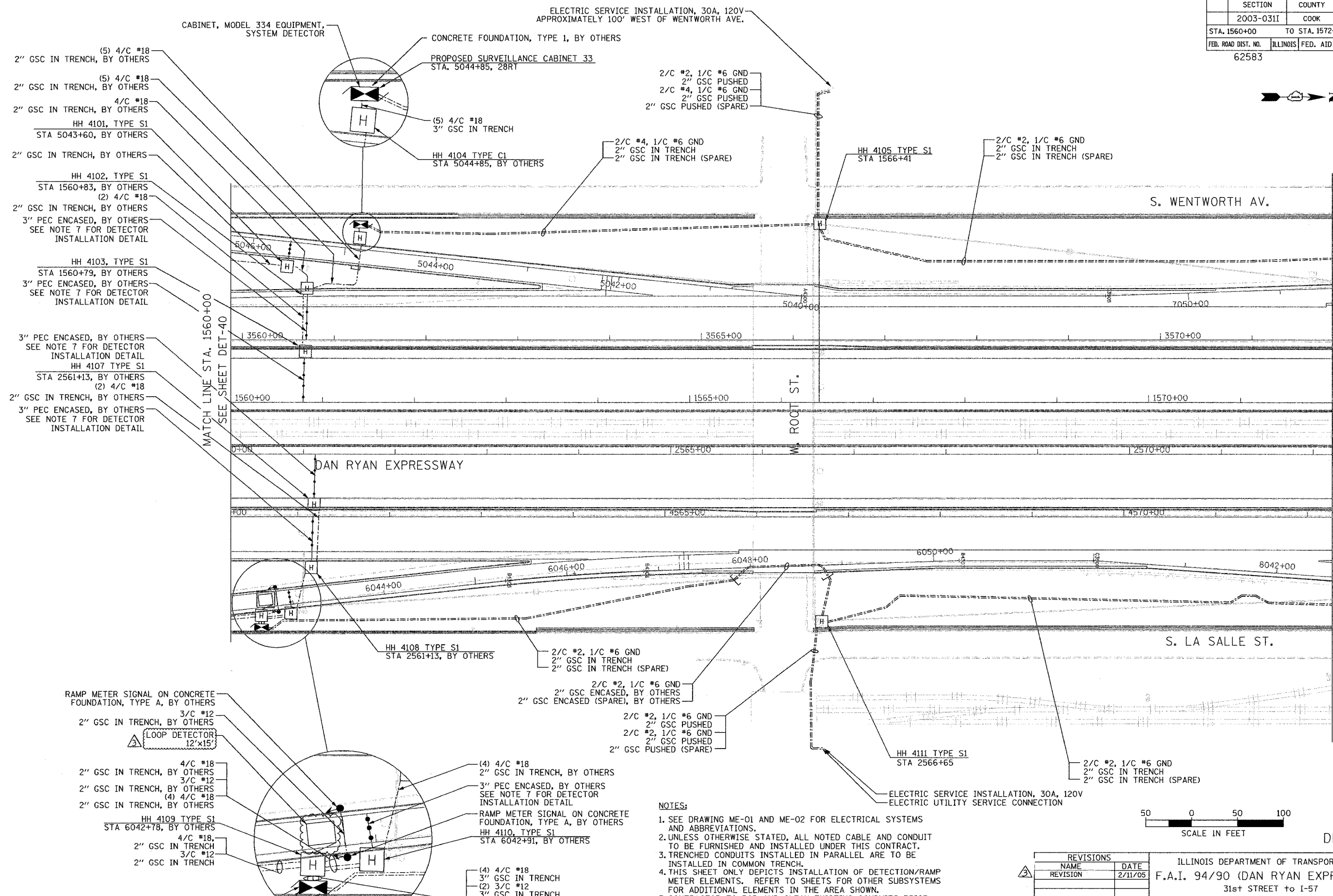


SECTION	COUNTY	TOTAL SHEETS	SHEET NO.
2003-0311	COOK	976	754
STA. 1560+00	TO STA. 1572+00		
FED. ROAD DIST. NO.	ILLINOIS	FED. AID PROJECT	
62583			



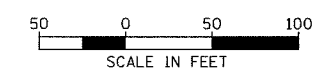
- (5) 4/C #18  
2" GSC IN TRENCH, BY OTHERS
- (5) 4/C #18  
2" GSC IN TRENCH, BY OTHERS
- 4/C #18  
2" GSC IN TRENCH, BY OTHERS
- HH 4101, TYPE S1  
STA 5043+60, BY OTHERS
- 2" GSC IN TRENCH, BY OTHERS
- HH 4102, TYPE S1  
STA 1560+83, BY OTHERS
- (2) 4/C #18  
2" GSC IN TRENCH, BY OTHERS
- 3" PEC ENCASED, BY OTHERS  
SEE NOTE 7 FOR DETECTOR  
INSTALLATION DETAIL
- HH 4103, TYPE S1  
STA 1560+79, BY OTHERS
- 3" PEC ENCASED, BY OTHERS  
SEE NOTE 7 FOR DETECTOR  
INSTALLATION DETAIL
- 3" PEC ENCASED, BY OTHERS  
SEE NOTE 7 FOR DETECTOR  
INSTALLATION DETAIL
- HH 4107 TYPE S1  
STA 2561+13, BY OTHERS
- (2) 4/C #18  
2" GSC IN TRENCH, BY OTHERS
- 3" PEC ENCASED, BY OTHERS  
SEE NOTE 7 FOR DETECTOR  
INSTALLATION DETAIL

- RAMP METER SIGNAL ON CONCRETE  
FOUNDATION, TYPE A, BY OTHERS
- 3/C #12  
2" GSC IN TRENCH, BY OTHERS
- LOOP DETECTOR  
12'x15'
- 4/C #18  
2" GSC IN TRENCH, BY OTHERS
- 3/C #12  
2" GSC IN TRENCH, BY OTHERS
- (4) 4/C #18  
2" GSC IN TRENCH, BY OTHERS
- HH 4109 TYPE S1  
STA 6042+78, BY OTHERS
- 4/C #18,  
2" GSC IN TRENCH
- 3/C #12  
2" GSC IN TRENCH

PROPOSED SURVEILLANCE CABINET 36  
STA. 6042+37, 22RT  
CONCRETE FOUNDATION, TYPE 1, BY OTHERS  
CABINET, MODEL 334 EQUIPMENT,  
RAMP METER

- (4) 4/C #18  
3" GSC IN TRENCH
- (2) 3/C #12  
3" GSC IN TRENCH
- (3) 4/C #18  
3" GSC IN TRENCH
- (4) 4/C #18  
2" GSC IN TRENCH, BY OTHERS
- 3" PEC ENCASED, BY OTHERS  
SEE NOTE 7 FOR DETECTOR  
INSTALLATION DETAIL
- RAMP METER SIGNAL ON CONCRETE  
FOUNDATION, TYPE A, BY OTHERS
- HH 4110, TYPE S1  
STA 6042+91, BY OTHERS

- NOTES:**
- SEE DRAWING ME-01 AND ME-02 FOR ELECTRICAL SYSTEMS AND ABBREVIATIONS.
  - UNLESS OTHERWISE STATED, ALL NOTED CABLE AND CONDUIT TO BE FURNISHED AND INSTALLED UNDER THIS CONTRACT.
  - TRENCHED CONDUITS INSTALLED IN PARALLEL ARE TO BE INSTALLED IN COMMON TRENCH.
  - THIS SHEET ONLY DEPICTS INSTALLATION OF DETECTION/RAMP METER ELEMENTS. REFER TO SHEETS FOR OTHER SUBSYSTEMS FOR ADDITIONAL ELEMENTS IN THE AREA SHOWN.
  - CONTRACTOR TO ROD AND CLEAN EXISTING CONDUITS PRIOR TO INSTALLING AND PULLING INNERDUCTS AND CABLES IN CONDUITS.
  - DETECTION/RAMP METER CONDUIT SHALL NOT BE INSTALLED IN ELECTRIC HANDHOLES (SEE DETAIL SHEET DT-45).
  - FOR DETECTOR PROBE INSTALLATION DETAILS, SEE SHEETS DT-23 AND DT-28.
  - FOR HANDHOLE DETAILS, SEE SHEET DT-44 AND DT-46.
  - FOR WIRING DETAILS, SEE SHEETS DET-48 THROUGH DET-53



DET-41

REVISIONS	
NAME	DATE
REVISION	2/11/05

ILLINOIS DEPARTMENT OF TRANSPORTATION  
F.A.I. 94/90 (DAN RYAN EXPRESSWAY)  
31st STREET to I-57  
SURVEILLANCE SYSTEM STATION  
RAMP METERING AND DETECTOR SYSTEM  
ROOT ST. SITE LAYOUT  
DET-43, DET-44, DET-45, DET-46, RM-18  
SCALE: 1"=50'  
DATE: October 29, 2004  
DRAWN BY: CJH  
CHECKED BY: MJL



02/09/2005 09:46:00 AM