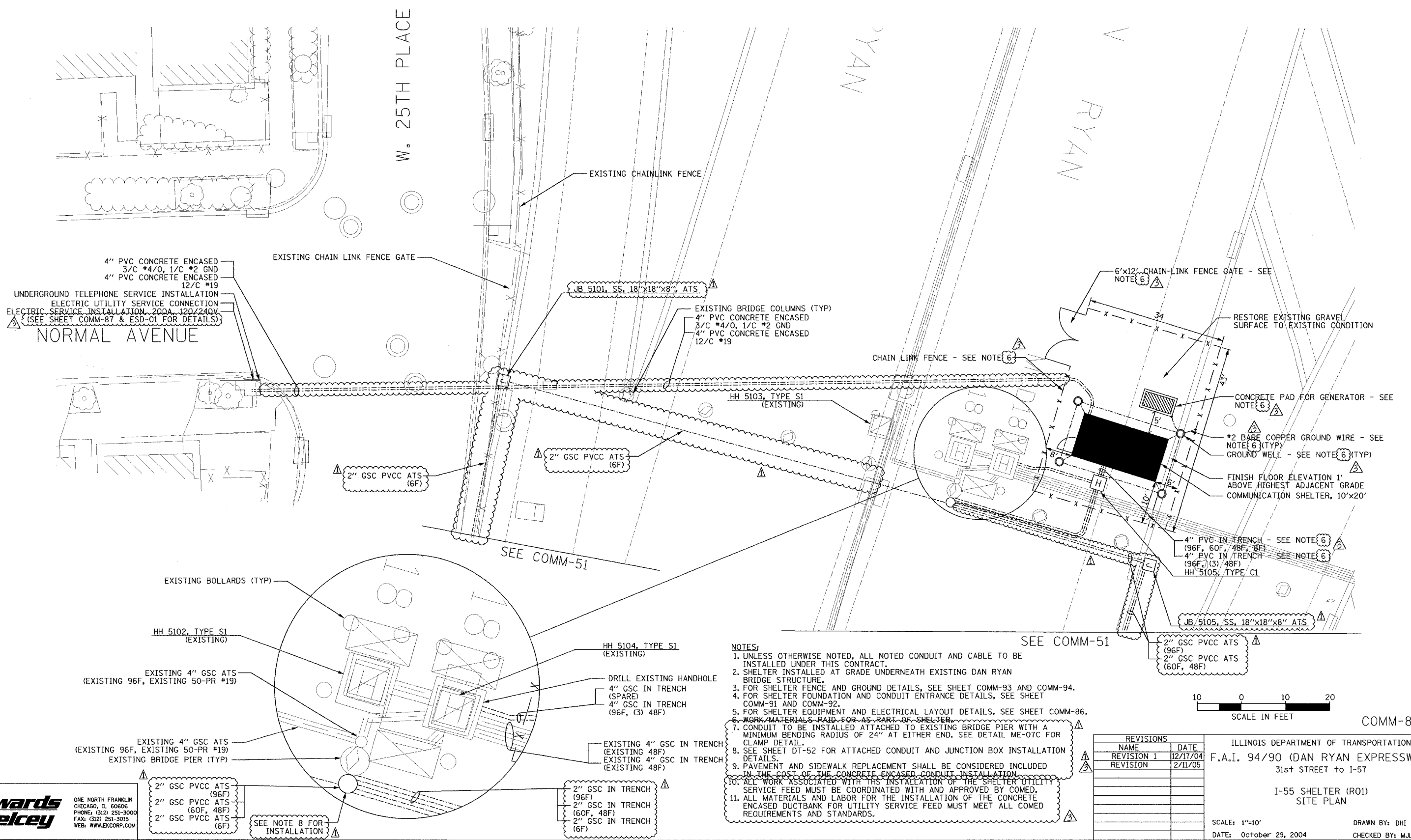


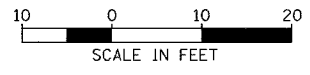
SECTION	COUNTY	TOTAL SHEETS	SHEET NO.
2003-03II	COOK	976	851
STA.	TO STA.		
FED. ROAD DIST. NO.	ILLINOIS	FED. AID PROJECT	
		62583	



P:\03000\030351\7\SCADD\PP0203032L.SHP



- NOTES:**
- UNLESS OTHERWISE NOTED, ALL NOTED CONDUIT AND CABLE TO BE INSTALLED UNDER THIS CONTRACT.
 - SHELTER INSTALLED AT GRADE UNDERNEATH EXISTING DAN RYAN BRIDGE STRUCTURE.
 - FOR SHELTER FENCE AND GROUND DETAILS, SEE SHEET COMM-93 AND COMM-94.
 - FOR SHELTER FOUNDATION AND CONDUIT ENTRANCE DETAILS, SEE SHEET COMM-91 AND COMM-92.
 - FOR SHELTER EQUIPMENT AND ELECTRICAL LAYOUT DETAILS, SEE SHEET COMM-86.
 - WORK/MATERIALS PAID FOR AS PART OF SHELTER.
 - CONDUIT TO BE INSTALLED ATTACHED TO EXISTING BRIDGE PIER WITH A MINIMUM BENDING RADIUS OF 24" AT EITHER END. SEE DETAIL ME-07C FOR CLAMP DETAIL.
 - SEE SHEET DT-52 FOR ATTACHED CONDUIT AND JUNCTION BOX INSTALLATION DETAILS.
 - PAVEMENT AND SIDEWALK REPLACEMENT SHALL BE CONSIDERED INCLUDED IN THE COST OF THE CONCRETE ENCASED CONDUIT INSTALLATION.
 - ALL WORK ASSOCIATED WITH THIS INSTALLATION OF THE SHELTER UTILITY SERVICE FEED MUST BE COORDINATED WITH AND APPROVED BY COMED.
 - ALL MATERIALS AND LABOR FOR THE INSTALLATION OF THE CONCRETE ENCASED DUCTBANK FOR UTILITY SERVICE FEED MUST MEET ALL COMED REQUIREMENTS AND STANDARDS.



COMM-85

REVISIONS	
NAME	DATE
REVISION 1	12/17/04
REVISION	2/11/05

ILLINOIS DEPARTMENT OF TRANSPORTATION
F.A.I. 94/90 (DAN RYAN EXPRESSWAY)
31st STREET to I-57

I-55 SHELTER (R01)
SITE PLAN

SCALE: 1"=10'
DATE: October 29, 2004
DRAWN BY: DHI
CHECKED BY: MJL



02/09/2005 03:43:51 PM