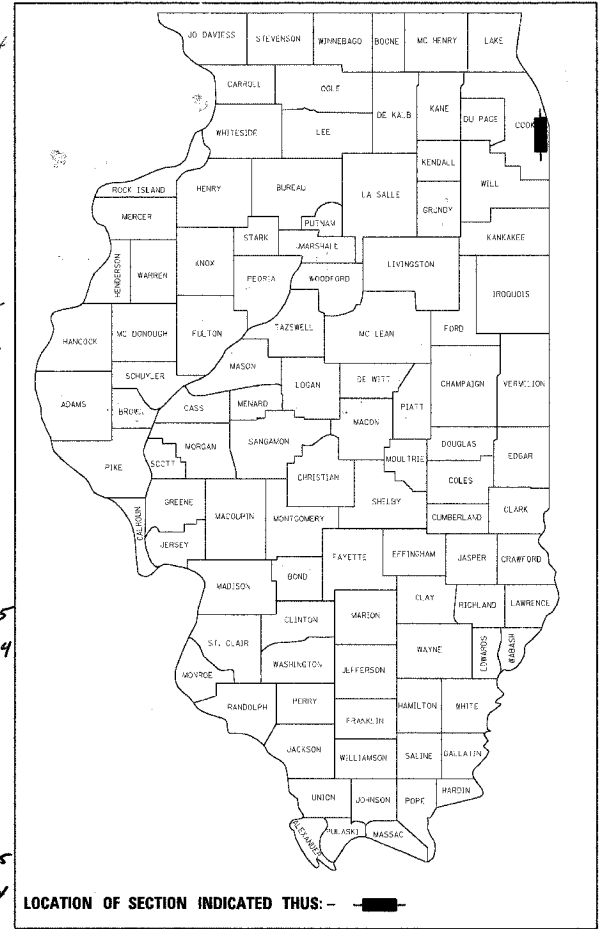


F.A.I. RTE.	SECTION	COUNTY	TOTAL SHEETS	SHEET NO.
90/94	2003-311	COOK	978	1

DESIGN NUMBER
D-91-085-03



LOCATION OF SECTION INDICATED THUS: -

STATE OF ILLINOIS
DEPARTMENT OF TRANSPORTATION
DIVISION OF HIGHWAYS

SUBMITTED November 10, 20 04

Diane O'Keefe DISTRICT ENGINEER

December 10, 20 04

Mike Hine ENGINEER OF DESIGN AND ENVIRONMENT

December 10, 20 04

Victor Madere DIRECTOR, DIVISION OF HIGHWAYS

PRINTED BY THE AUTHORITY
OF THE STATE OF ILLINOIS

CTE ENGINEERS
CONSOER TOWNSEND ENVIRODYNE ENGINEERS, INC.
303 EAST WACKER DRIVE, SUITE 600
CHICAGO ILLINOIS 60601-5212, PHONE: (312) 938-0300

STATE OF ILLINOIS
DEPARTMENT OF TRANSPORTATION
DIVISION OF HIGHWAYS

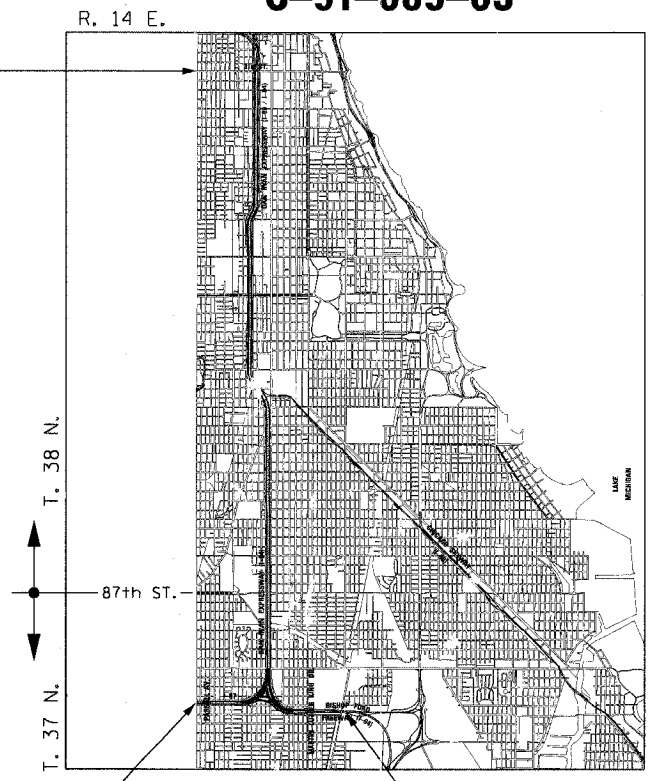
**PLANS FOR PROPOSED
FEDERAL AID HIGHWAY**

F.A.I. ROUTE 90/94 (DAN RYAN EXPRESSWAY)
SECTION 2003-031I
PROJECT: ACIM-094-3(369)055
LIGHTING AND SURVEILLANCE
31ST STREET TO I-57 INTERCHANGE

COOK COUNTY
C-91-085-03

PROJECT LIMITS

PROJECT LIMIT
31st ST. STA. 1635+00 (SB I-94)



PROJECT LIMIT
STA. 91+00 (SB I-57)

PROJECT LIMIT
STA. 2000+00 (NB I-94)

LOCATION MAP

SCALE 0.84" = 1 MILE
GROSS LENGTH OF PROJECT = 52,800 FT (10.000 MILES)
NET LENGTH OF PROJECT = 52,800 FT (10.000 MILES)

INDEX OF SHEETS
FOR INDEX OF SHEETS, SEE SHEET NO. 2

PROJECT LOCATED IN CITY OF CHICAGO

DESIGN DESIGNATION

	ADT (2010)	DESIGN SPEED	POSTED SPEED
SOUTH OF 67th STREET			
I-94 (DAN RYAN)	266,800	60 MPH	55 MPH
I-94 (BISHOP FORD)	123,400	60 MPH	55 MPH
I-57	107,600	60 MPH	55 MPH
RAMPS	(VARIES)	40 MPH	35 MPH
NORTH OF 67th STREET			
ADT (2020)			
190/94 NB LOCAL LANES	53,270	60 MPH	45 MPH
190/94 SB LOCAL LANES	47,185	60 MPH	45 MPH
RAMPS	(VARIES)	40 MPH	30 MPH

CECIL D. STOVALL
062-052253
REGISTERED PROFESSIONAL ENGINEER OF ILLINOIS

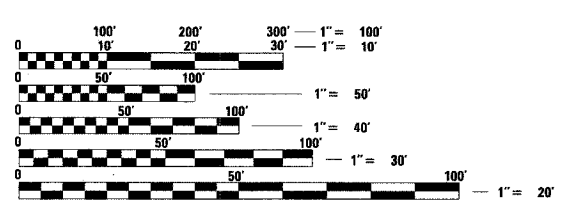
Cecil D. Stovall
CECIL D. STOVALL
(SHEETS 841-846, 966, 967,
PREPARED BY
EDWARDS AND KELCEY)

11-30-05
EXPIRES
11-2-04
DATE

JOHN E. ZIETLOW
062-046950
REGISTERED PROFESSIONAL ENGINEER OF ILLINOIS

John E. Zietlow
JOHN E. ZIETLOW
(SHEETS 612, 821-842,
843-882, 917-921, 949,
950 PREPARED BY
EDWARDS AND KELCEY)

11-30-05
EXPIRES
11-02-04
DATE



FULL SIZE PLANS HAVE BEEN PREPARED USING STANDARD ENGINEERING SCALES. REDUCED SIZED PLANS WILL NOT CONFORM TO STANDARD SCALES. IN MAKING MEASUREMENTS ON REDUCED PLANS, THE ABOVE SCALES MAY BE USED.

DIGGER:
CHICAGO UTILITY ALERT NETWORK
(312) 744-7000

CONTRACT NO. 62583

MAGUED E. ZAGLAMA
061-004584
REGISTERED PROFESSIONAL ENGINEER OF ILLINOIS

Maged E. Zaglama
MAGUED E. ZAGLAMA
(SHEETS 903-905, 959
PREPARED BY
EDWARDS AND KELCEY)

11-04
EXPIRES
11-04
DATE

GARY F. RYLANDER
062-051035
REGISTERED PROFESSIONAL ENGINEER OF ILLINOIS

Gary F. Rylander
GARY F. RYLANDER
(SHEETS 605-611, 613-820,
893-895, 906, 907, 922-948,
951-958, 960-965, 968-970
PREPARED BY
EDWARDS AND KELCEY)

11-30-05
EXPIRES
11-2-04
DATE

JAMES P. COLEMAN
062-033912
REGISTERED PROFESSIONAL ENGINEER OF ILLINOIS

James P. Coleman
JAMES P. COLEMAN
(SHEETS PREPARED BY
CTE ENGINEERS, INC.)

11-30-05
EXPIRES
10-27-04
DATE

RICHARD W. STAFFORD
062-047609
REGISTERED PROFESSIONAL ENGINEER OF ILLINOIS

Richard W. Stafford
RICHARD W. STAFFORD
(SHEETS PREPARED BY BOWMAN,
BARRETT, AND ASSOCIATES)

11-30-05
EXPIRES
10-27-04
DATE

THOMAS MIKOLAJEWSKI
062-056151
REGISTERED PROFESSIONAL ENGINEER OF ILLINOIS

Thomas Mikolajewski
THOMAS MIKOLAJEWSKI
(SHEETS PREPARED BY
SINGH & ASSOCIATES)

11-30-05
EXPIRES
11-2-04
DATE

KAMLESHWAR P. GUPTA
062-030078
REGISTERED PROFESSIONAL ENGINEER OF ILLINOIS

Kamleshwar P. Gupta
KAMLESHWAR P. GUPTA
(SHEETS PREPARED BY
KAM ENGINEERING, INC.)

11-30-05
EXPIRES
10-27-04
DATE

DEAN A. KIESLING
32957
REGISTERED PROFESSIONAL ENGINEER OF ILLINOIS

Dean A. Kiesling
DEAN A. KIESLING
(SHEETS PREPARED BY
TYLIN INTERNATIONAL)

11-30-05
EXPIRES
10-28-04
DATE

DISTRICT ONE DESIGNCONSULTANT SERVICES PROJECT MANAGER
RAJENDRA SHAH (847) 705-4437