

62583	F.A. RTE.	SECTION	COUNTY	TOTAL SHEETS	SHEET NO.
90/94		2003-0311	COOK	976	30
STA.		TO STA. 3553+00.00			
FED. ROAD DIST. NO.		ILLINOIS FED. AID PROJECT			

PROP. CURVE SBLOC05
 PI STA. = 3528+43.63
 Nt = 1,873,784.42
 Et = 1,175,398.10
 $\Delta = 23^\circ 47' 11''$ (RT)
 D = $3^\circ 20' 48''$
 R = 1,712.00'
 T = 360.56'
 L = 710.74'
 E = 37.56'
 P.C. STA = 3524+83.07
 Nt = 1,873,423.99
 Et = 1,175,407.76
 P.T. STA = 3531+93.80
 Nt = 1,874,118.14
 Et = 1,175,534.63

PROP. CURVE SBDR09
 PI STA. = 1528+34.60
 Nt = 1,873,771.86
 Et = 1,175,455.52
 $\Delta = 27^\circ 22' 45''$ (RT)
 D = $3^\circ 22' 13''$
 R = 1,700.00'
 T = 414.09'
 L = 812.35'
 E = 49.71'
 P.C. STA = 1524+20.52
 Nt = 1,873,358.54
 Et = 1,175,480.67
 P.T. STA = 1532+32.87
 Nt = 1,874,150.45
 Et = 1,175,623.26

PROP. CURVE SBLOC06
 PI STA. = 3539+38.89
 Nt = 1,874,807.75
 Et = 1,175,816.77
 $\Delta = 22^\circ 47' 56''$ (LT)
 D = $3^\circ 23' 54''$
 R = 1,686.00'
 T = 339.94'
 L = 670.88'
 E = 33.93'
 P.C. STA = 3535+98.96
 Nt = 1,874,493.12
 Et = 1,175,688.05
 P.T. STA = 3542+69.84
 Nt = 1,875,147.67
 Et = 1,175,813.52

PROP. CURVE SBDR10
 PI STA. = 1539+47.07
 Nt = 1,874,803.43
 Et = 1,175,912.56
 $\Delta = 25^\circ 26' 39''$ (LT)
 D = $3^\circ 49' 11''$
 R = 1,500.00'
 T = 338.65'
 L = 666.13'
 E = 37.75'
 P.C. STA = 1536+08.42
 Nt = 1,874,493.81
 Et = 1,175,775.38
 P.T. STA = 1542+74.55
 Nt = 1,875,141.96
 Et = 1,175,903.41

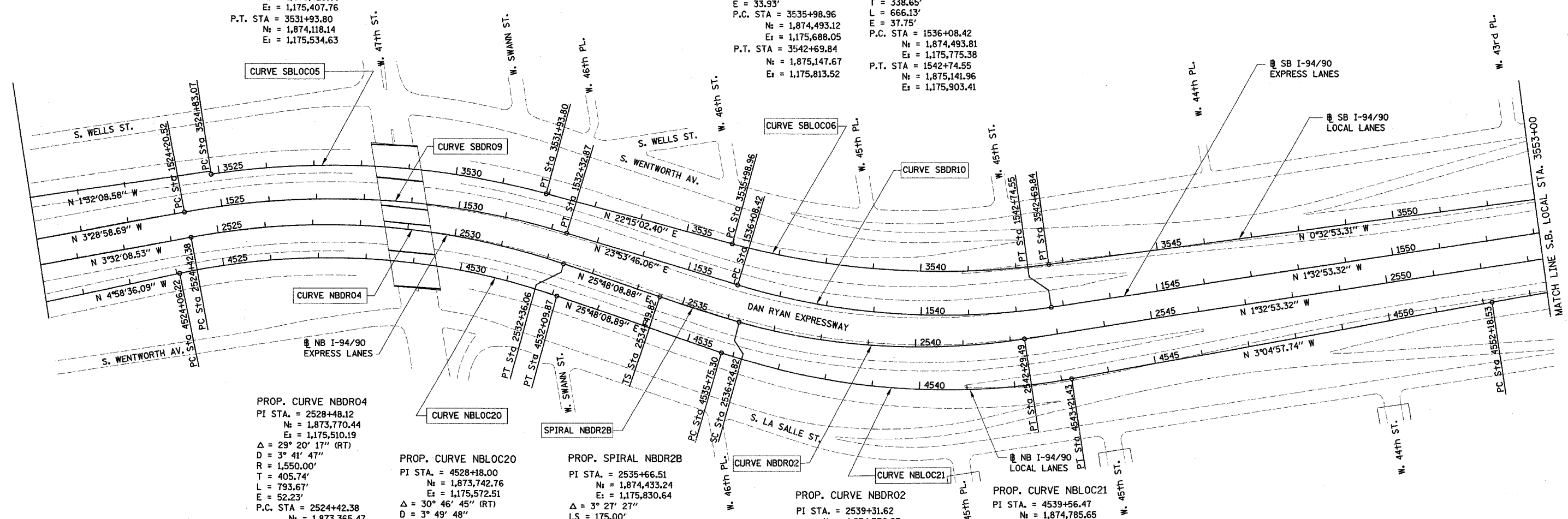
PROP. CURVE NBDR04
 PI STA. = 2528+48.12
 Nt = 1,873,770.44
 Et = 1,175,510.19
 $\Delta = 29^\circ 20' 17''$ (RT)
 D = $3^\circ 41' 47''$
 R = 1,550.00'
 T = 405.74'
 L = 793.67'
 E = 52.23'
 P.C. STA = 2524+42.38
 Nt = 1,873,365.47
 Et = 1,175,535.22
 P.T. STA = 2532+36.06
 Nt = 1,874,135.73
 Et = 1,175,686.80

PROP. CURVE NBLOC20
 PI STA. = 4528+18.00
 Nt = 1,873,742.76
 Et = 1,175,572.51
 $\Delta = 30^\circ 46' 45''$ (RT)
 D = $3^\circ 49' 48''$
 R = 1,496.00'
 T = 411.77'
 L = 803.65'
 E = 55.64'
 P.C. STA = 4524+06.22
 Nt = 1,873,332.54
 Et = 1,175,608.23
 P.T. STA = 4532+09.87
 Nt = 1,874,113.48
 Et = 1,175,751.74

PROP. SPIRAL NBDR2B
 PI STA. = 2535+66.51
 Nt = 1,874,433.24
 Et = 1,175,830.64
 $\Delta = 3^\circ 27' 27''$
 LS = 175.00'
 YS = 3.52'
 XS = 174.94'
 P = 0.88'
 K = 87.49'
 LT = 116.69'
 ST = 58.35'
 LC = 174.97'
 T.S. STA = 2534+49.82
 Nt = 1,874,328.19
 Et = 1,175,779.85
 S.C. STA = 2536+24.82
 Nt = 1,874,487.21
 Et = 1,175,852.82

PROP. CURVE NBDR02
 PI STA. = 2539+31.62
 Nt = 1,874,770.97
 Et = 1,175,969.46
 $\Delta = 23^\circ 53' 35''$ (LT)
 D = $3^\circ 57' 05''$
 R = 1,450.00'
 T = 306.79'
 L = 604.67'
 E = 32.10'
 P.C. STA = 2536+24.82
 Nt = 1,874,487.21
 Et = 1,175,852.82
 P.T. STA = 2542+29.49
 Nt = 1,875,077.65
 Et = 1,175,961.17

PROP. CURVE NBLOC21
 PI STA. = 4539+56.47
 Nt = 1,874,785.65
 Et = 1,176,076.72
 $\Delta = 28^\circ 53' 07''$ (LT)
 D = $3^\circ 52' 17''$
 R = 1,480.00'
 T = 381.17'
 L = 746.13'
 E = 48.30'
 P.C. STA = 4535+75.30
 Nt = 1,874,442.48
 Et = 1,175,910.80
 P.T. STA = 4543+21.43
 Nt = 1,875,166.27
 Et = 1,176,056.22



BOWMAN, BARRETT & ASSOCIATES INC.
 CONSULTING ENGINEERS
 134 EAST RANDOLPH STREET SUITE 2608 CHICAGO, ILLINOIS 60601
 JOB NO. _____

REVISIONS	
NAME	DATE

ILLINOIS DEPARTMENT OF TRANSPORTATION
 F.A.I. 90/94 (DAN RYAN EXPRESSWAY)
 31st STREET TO I-57
 ROADWAY LIGHTING PLANS
 ALIGNMENT AND TIES SHEET
 SCALE: 1"=100'
 DATE: OCTOBER 15, 2004
 DRAWN BY: RA
 CHECKED BY: JDC