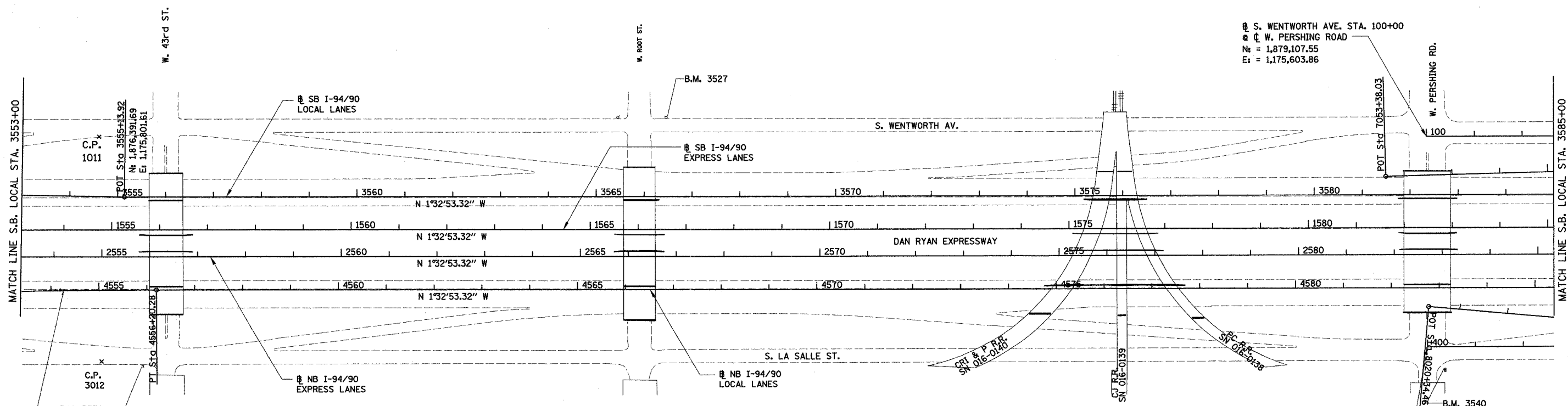
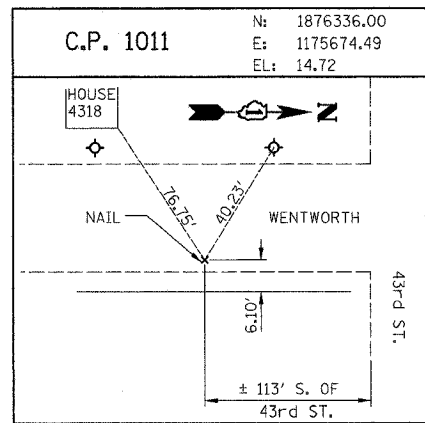
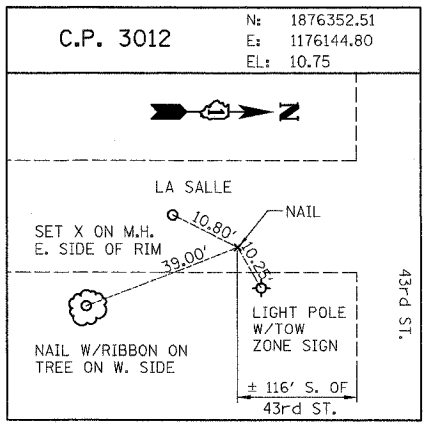


62583	F.A. RTE.	SECTION	COUNTY	TOTAL SHEETS	SHEET NO.
90/94	2003-0311	COOK	976	31	
STA. 3553+00.00		TO STA. 3585+00.00			
FED. ROAD DIST. NO.	ILLINOIS	FED. AID PROJECT			



**CURVE NBLOC22**  
 PROP. CURVE NBLOC22  
 PI STA. = 4554+19.42  
 N<sub>i</sub> = 1,876,262.66  
 E<sub>i</sub> = 1,175,997.17  
 Δ = 1° 32' 04" (RT)  
 D = 0° 22' 55"  
 R = 15,000.00'  
 T = 200.89'  
 L = 401.75'  
 E = 1.35'  
 P.C. STA = 4552+18.53  
 N<sub>i</sub> = 1,876,062.07  
 E<sub>i</sub> = 1,176,007.97  
 P.T. STA = 4556+20.28  
 N<sub>i</sub> = 1,876,463.47  
 E<sub>i</sub> = 1,175,991.74



REVISIONS	
NAME	DATE

ILLINOIS DEPARTMENT OF TRANSPORTATION  
 F.A.I. 90/94 (DAN RYAN EXPRESSWAY)  
 31st STREET TO I-57  
 ROADWAY LIGHTING PLANS  
 ALIGNMENT AND TIES SHEET  
 SCALE: 1"=100'  
 DATE: OCTOBER 15, 2004  
 DRAWN BY: RA  
 CHECKED BY: JDC

BOWMAN, BARRETT & ASSOCIATES INC.  
 CONSULTING ENGINEERS  
 124 EAST RANDOLPH STREET SUITE 2600 CHICAGO, ILLINOIS 60601  
 JOB NO. ---