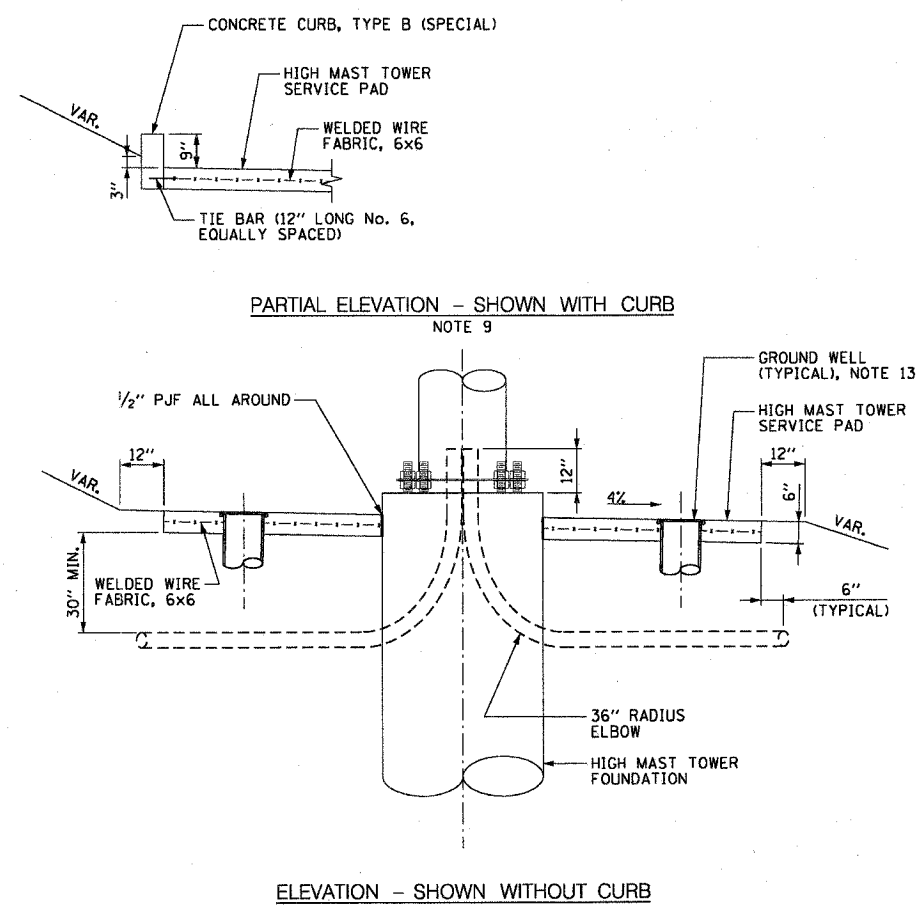
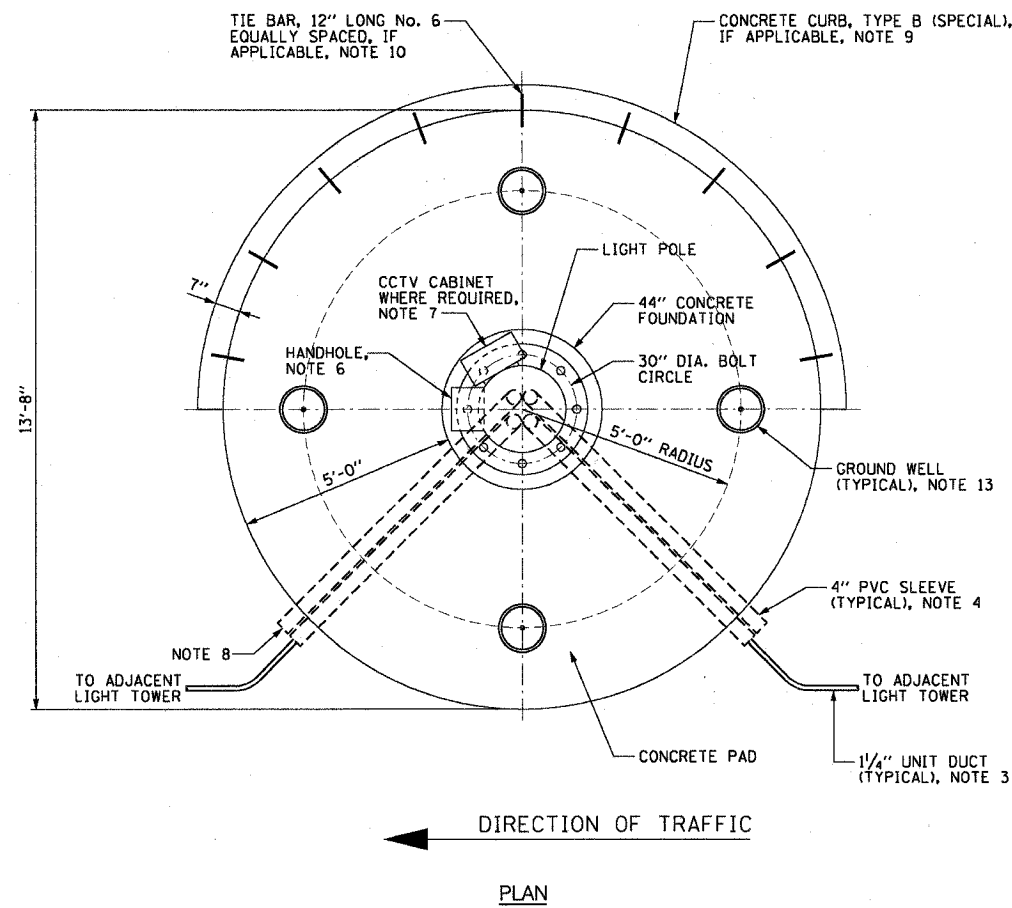


| | | | | |
|-----------------------|-----------|------------------|--------------|-----------|
| F.A.I. RY.: | SECTION | COUNTY | TOTAL SHEETS | SHEET NO. |
| 90/94 | 2003-0311 | COOK | 976 | 53 |
| STA. | TO STA. | | | |
| FED. ROAD DIST. NO. 1 | ILLINOIS | FED. AID PROJECT | | |

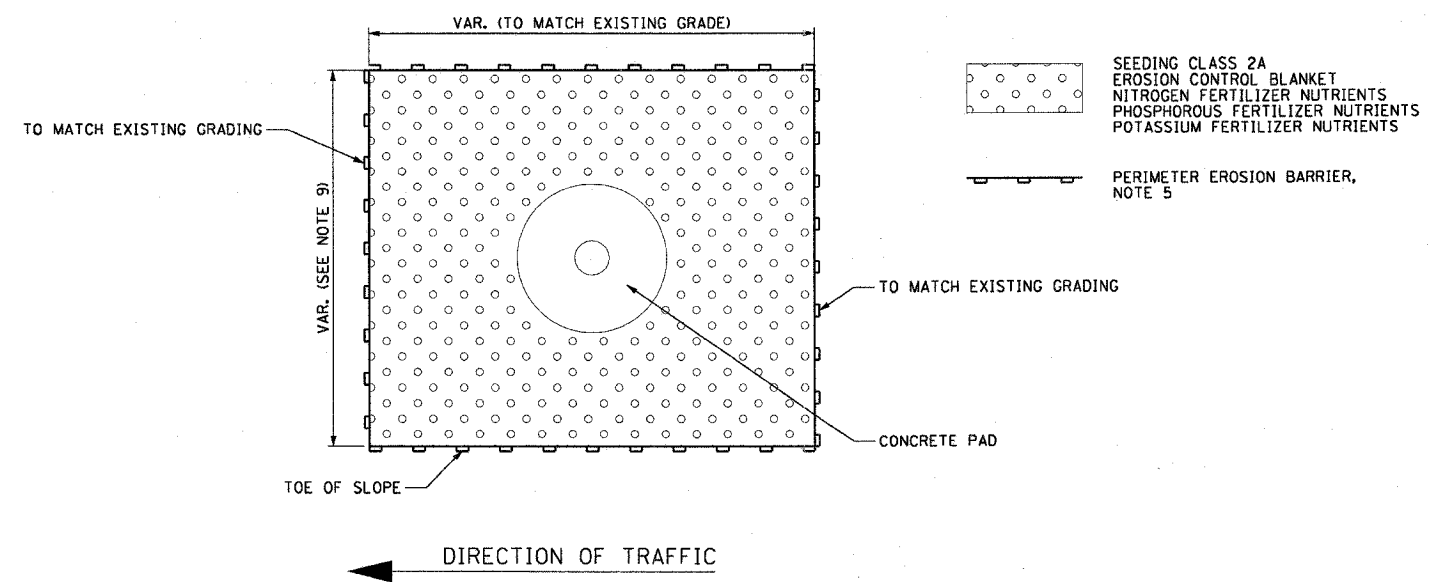
62583

NOTES:

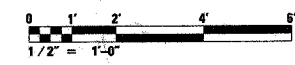
- SEE DRAWINGS ME-01 AND ME-02 FOR ELECTRICAL SYMBOLS AND ABBREVIATIONS.
- SEE IDOT STANDARD DRAWING BES01 FOR ADDITIONAL HIGH MAST LIGHT TOWER FOUNDATION AND GROUND WELL DETAILS.
- SEE PLAN DRAWINGS FOR QUANTITY, SIZE, AND TYPE OF CONDUIT AND CIRCUITS ROUTED TO EACH HIGH MAST LIGHT TOWER FOUNDATION.
- PVC SLEEVES MUST BE EXTENDED 6 INCHES BEYOND THE EDGE OF THE CONCRETE PAD.
- THE PERIMETER EROSION BARRIER IS TO BE PLACED AROUND THE WORK ZONE AREA OR AS DIRECTED BY THE ENGINEER.
- THE HANDHOLE FOR THE HIGH MAST LIGHTING UNIT MUST BE ORIENTED SUCH THAT IT IS MOUNTED ON THE SIDE OF THE POLE THAT IS OPPOSITE THE DIRECTION OF TRAFFIC.
- THE DETAIL REPRESENTS A HIGH MAST LIGHT TOWER WITH A CCTV CAMERA MOUNTED ON IT. THE DETAIL FOR HIGH MAST LIGHT TOWERS WITH NO CAMERAS IS SIMILAR.
- PVC SLEEVE FOR CCTV CAMERA POWER FEED (FUTURE). ALL SLEEVES MUST BE CAPPED UNLESS NOTED OTHERWISE ON THE PLANS.
- SEE CROSS SECTIONS FOR LOCATIONS WHERE CONCRETE CURB, TYPE B (SPECIAL) IS REQUIRED.
- TIE BARS WILL NOT BE PAID FOR SEPARATELY BUT WILL BE INCLUDED IN THE COST OF CONCRETE CURB, TYPE B (SPECIAL).
- SEE IDOT STANDARD 606001 FOR DIMENSIONS OF BARRIER CURB.
- SEE CROSS SECTIONS FOR LIMITS OF GRADING AND SEEDING.
- INSTALL GROUND WELLS 5'-0" AS MEASURED FROM THE CENTER LINE OF THE HIGH MAST TOWER TO THE CENTER LINE OF THE WELL.



ME-13A GROUND MOUNTED HIGH MAST TOWER FOUNDATION DETAIL
SCALE: 1/2" = 1'-0"



ME-13B LANDSCAPING ADJACENT TO GROUND MOUNTED HIGH MAST TOWER FOUNDATION
NOT TO SCALE



ME-13

| REVISIONS | |
|-----------|------|
| NAME | DATE |
| | |
| | |
| | |
| | |
| | |
| | |
| | |
| | |
| | |

ILLINOIS DEPARTMENT OF TRANSPORTATION
F.A.I. 90/94 (DAN RYAN EXPRESSWAY)
31st STREET TO I-57

CONDUIT INSTALLATION DETAILS
FOR GROUND MOUNTED HIGH MAST
LIGHT TOWERS

SCALE: AS SHOWN
DATE: October 29, 2004

DRAWN BY: CJM
CHECKED BY: WDS

10/14/2004 10:58:18 AM