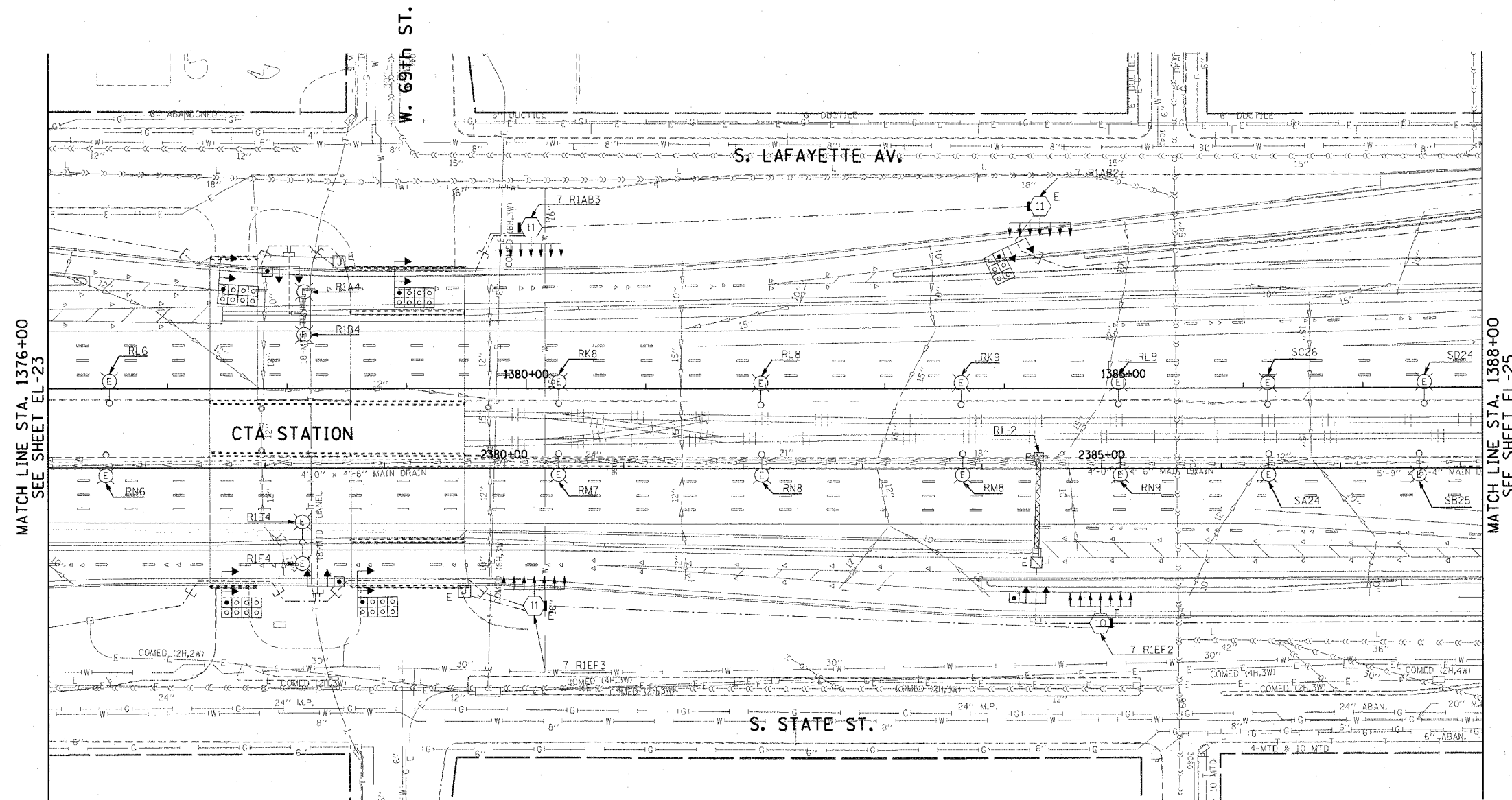


F.A.I. RTE.	SECTION	COUNTY	TOTAL SHEETS	SHEET NO.
90/94	2003-0311	COOK	976	96
STA. 1376+00.00		TO STA. 1388+00.00		
FED. ROAD DIST. NO. 1		ILLINOIS FED. AID PROJECT		

62583

**NOTES:**

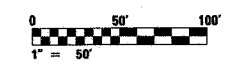
- SEE DRAWINGS ME-01 AND ME-02 FOR ELECTRICAL SYMBOLS AND ABBREVIATIONS.



MATCH LINE STA. 1376+00  
SEE SHEET EL-23

MATCH LINE STA. 1388+00  
SEE SHEET EL-25

THIS SHEET IS FOR INFORMATIONAL PURPOSES ONLY. HIGH MAST LIGHT TOWERS, CONTROLLERS, AND WIRING ARE INSTALLED IN IDOT CONTRACT NO. 62733.



EL-24

REVISIONS	
NAME	DATE

ILLINOIS DEPARTMENT OF TRANSPORTATION  
F.A.I. 90/94 (DAN RYAN EXPRESSWAY)  
31st STREET TO I-57

**ROADWAY LIGHTING PLANS  
EXISTING CONDITIONS AND DEMOLITION**

SCALE: 1"=50'      DRAWN BY: CJM  
DATE: October 29, 2004      CHECKED BY: WDS

**CTE ENGINEERS**  
CONSER TOWNSEND ENVIRODYNE ENGINEERS, INC.  
303 EAST WALKER DRIVE, SUITE 600  
CHICAGO, ILLINOIS 60601-5212, PHONE: (312) 938-0300

10/15/2004 02:34:33 PM