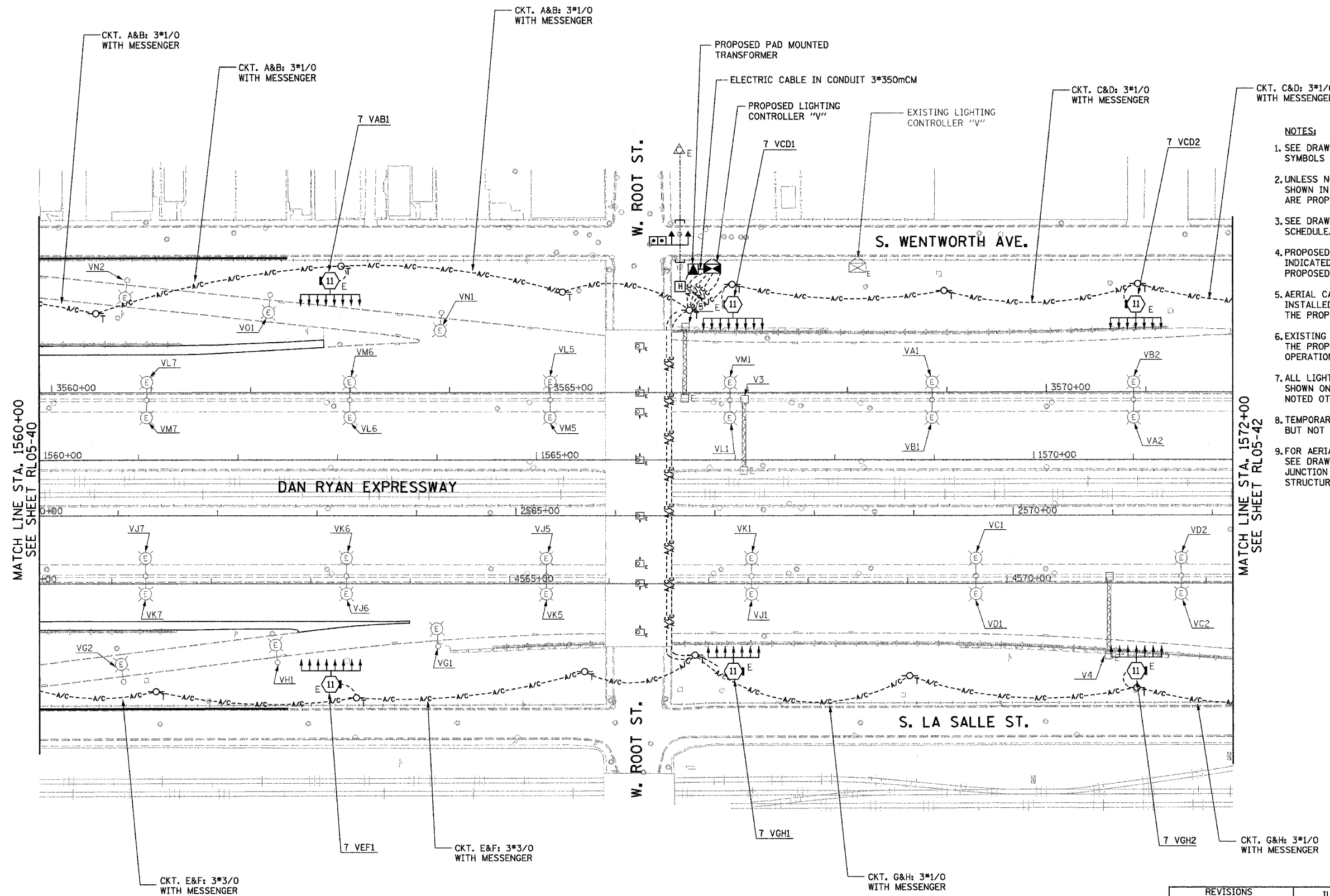


F.A.I. RTE.	SECTION	COUNTY	TOTAL SHEETS	SHEET NO.
94/90	2003-0311	COOK	976	154
STA. 1560+00		TO STA. 1572+00		
FED. ROAD DIST. NO.		ILLINOIS FED. AID PROJECT		
62583				



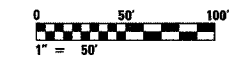
- NOTES:**
- SEE DRAWINGS ME-01 AND ME-02 FOR ELECTRICAL SYMBOLS AND ABBREVIATIONS.
 - UNLESS NOTED OTHERWISE, ALL ITEMS AND WORK SHOWN IN HEAVY LINE WEIGHT ON THIS DRAWING ARE PROPOSED NEW ITEMS AND WORK.
 - SEE DRAWING ES-07 FOR HIGH MAST LIGHT TOWER SCHEDULE.
 - PROPOSED HIGH MAST TOWERS SHALL BE INSTALLED AS INDICATED. THE TOWERS SHALL BE CONNECTED TO THE PROPOSED LIGHTING CONTROLLERS.
 - AERIAL CABLE AND TEMPORARY WOOD POLES SHALL BE INSTALLED TO PROVIDE TEMPORARY CONNECTIONS FOR THE PROPOSED HIGH MAST TOWERS.
 - EXISTING LIGHTING SHALL REMAIN OPERATIONAL UNTIL THE PROPOSED HIGH MAST TOWERS ARE INSTALLED AND OPERATIONAL.
 - ALL LIGHTING CONTROLLERS MUST BE INSTALLED AS SHOWN ON DRAWINGS ME-18 THROUGH ME-20, UNLESS NOTED OTHERWISE.
 - TEMPORARY LIGHTING SHALL BE INSTALLED AS SHOWN, BUT NOT OPERATIONAL.
 - FOR AERIAL CABLE ATTACHED TO BRIDGE STRUCTURE, SEE DRAWING ME-25B. THE AERIAL CABLE TO THE JUNCTION BOX IS NOT APPLICABLE AT THIS BRIDGE STRUCTURE.

MATCH LINE STA. 1560+00
SEE SHEET RL05-40

MATCH LINE STA. 1572+00
SEE SHEET RL05-42

RL05-41

KAM ENGINEERING, INC.
CONSULTING ENGINEERS
707A Davis Road, Suite 205
Elgin, Illinois 60123-1369



REVISIONS	
NAME	DATE

ILLINOIS DEPARTMENT OF TRANSPORTATION
F.A.I. 94/90 (DAN RYAN EXPRESSWAY)
31st STREET TO I-57

**ROADWAY LIGHTING PLANS
PROPOSED IMPROVEMENTS 2005**

SCALE: 1"=50'
DATE: OCTOBER 29, 2004

DRAWN BY: BL
CHECKED BY: SM

02/26/02 PM 11/23/2004