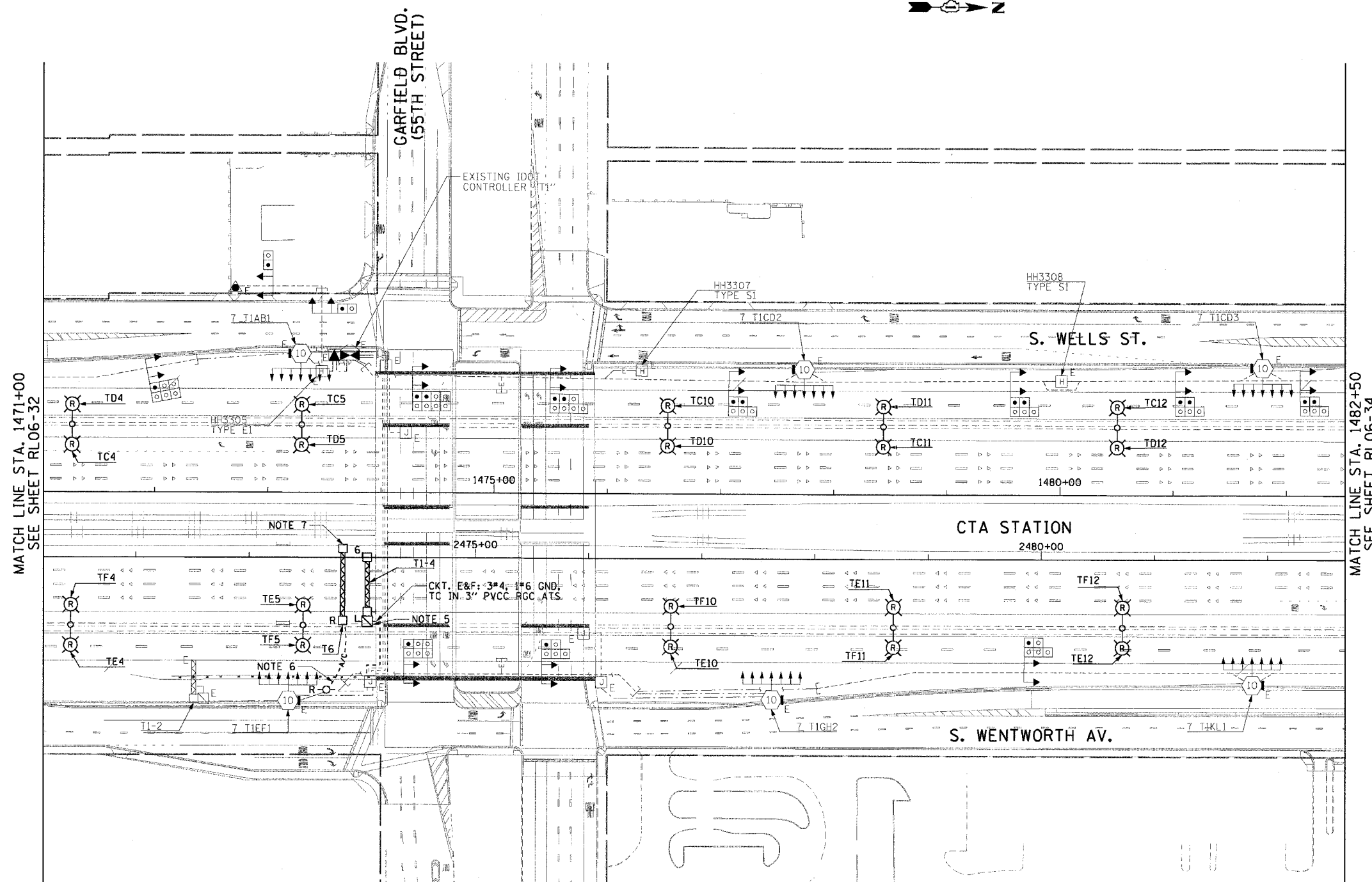


|                       |           |                           |              |           |
|-----------------------|-----------|---------------------------|--------------|-----------|
| F.A.I. RTE.           | SECTION   | COUNTY                    | TOTAL SHEETS | SHEET NO. |
| 90/94                 | 2003-0311 | COOK                      | 976          | 144       |
| STA. 1471+00.00       |           | TO STA. 1482+50.00        |              |           |
| FED. ROAD DIST. NO. 1 |           | ILLINOIS FED. AID PROJECT |              |           |

62583

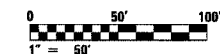
**NOTES:**

- SEE DRAWINGS ME-01 AND ME-02 FOR ELECTRICAL SYMBOLS AND ABBREVIATIONS.
- COORDINATE ALL WORK WITH IDOT CONTRACT NOS. 62300 AND 62302.
- UNLESS NOTED OTHERWISE, ALL ITEMS AND WORK SHOWN IN HEAVY LINE WEIGHT ON THIS DRAWING ARE PROPOSED ITEMS AND WORK.
- SEE DRAWINGS UL-29 AND UL-30 FOR GARFIELD BLVD. (55th STREET) UNDERPASS LIGHTING PLANS.
- SEE IDOT STANDARD DRAWINGS FOR ELECTRIC CONNECTION TO SIGN STRUCTURE DETAILS.
- EXISTING TEMPORARY AERIAL CABLES TO BE REMOVED WILL BE INCLUDED FOR PAYMENT WITH THE "WOODEN POLE REMOVAL" PAY ITEM. ABANDON ANY EXISTING CONDUIT UTILIZED FOR THE TEMPORARY FEED IN PLACE.
- REMOVE EXISTING SIGN LUMINAIRES, DISCONNECT THE EXISTING SIGN LIGHTING ELECTRIC SERVICE, AND REMOVE CABLES TO THE NEAREST SPLICE. STRUCTURE AND FOUNDATION WILL BE REMOVED BY OTHERS.



MATCH LINE STA. 1471+00  
SEE SHEET RL06-32

MATCH LINE STA. 1482+50  
SEE SHEET RL06-34



RL06-33

**CTE ENGINEERS**  
 CONSOER TOWNSEND ENVIRONMENTAL ENGINEERS, INC.  
 303 EAST WACKER DRIVE, SUITE 600  
 CHICAGO, ILLINOIS 60601-5262, PHONE: (312) 938-0300

| REVISIONS |      |
|-----------|------|
| NAME      | DATE |
|           |      |
|           |      |
|           |      |
|           |      |
|           |      |
|           |      |
|           |      |
|           |      |
|           |      |
|           |      |

ILLINOIS DEPARTMENT OF TRANSPORTATION  
 F.A.I. 90/94 (DAN RYAN EXPRESSWAY)  
 31st STREET TO I-57  
 ROADWAY LIGHTING PLANS  
 PROPOSED IMPROVEMENTS 2006

SCALE: 1"=50'      DRAWN BY: CJM  
 DATE: October 29, 2004      CHECKED BY: WDS

11/16/2004 01:33:15 PM