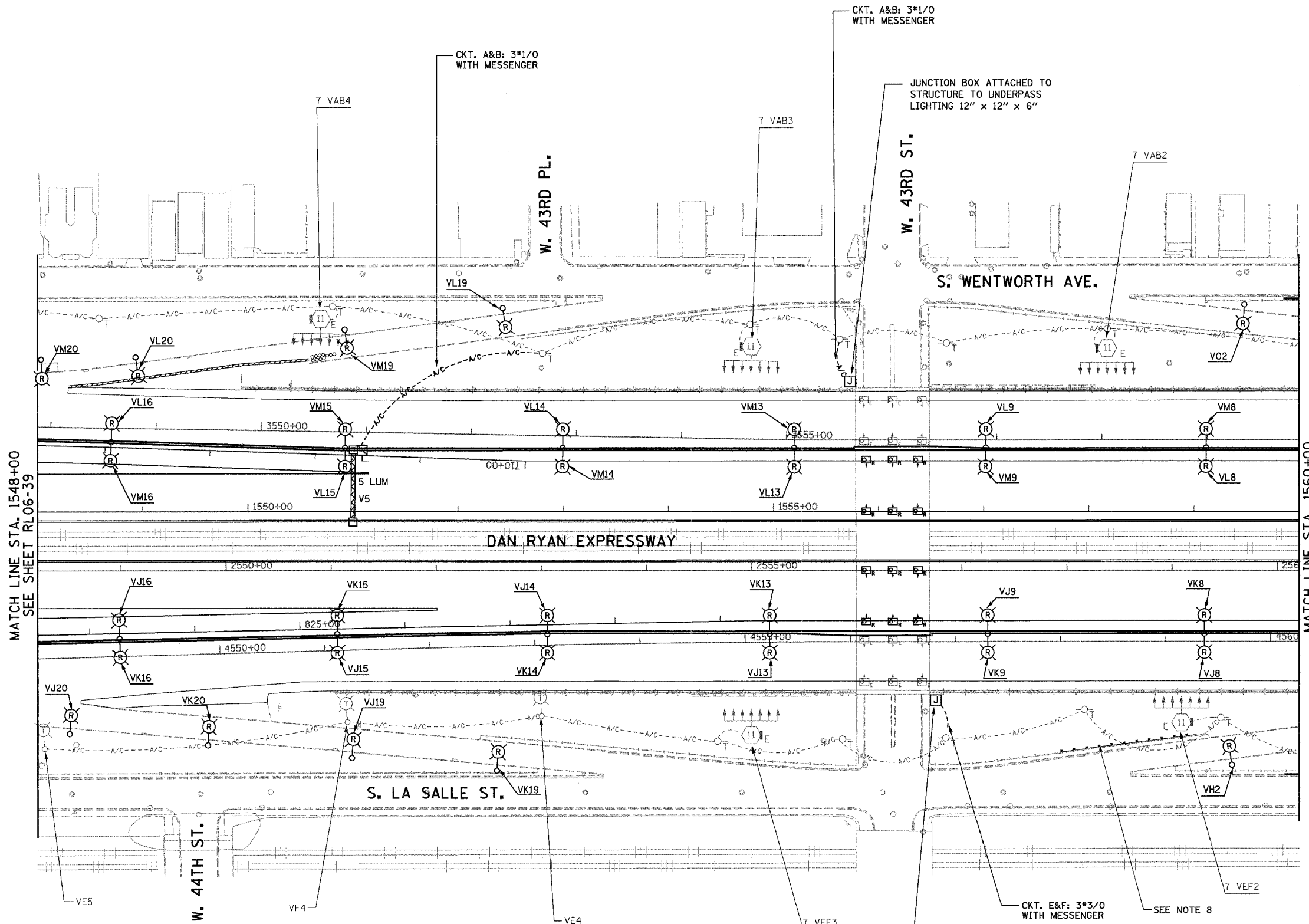


F.A.I. RTE.	SECTION	COUNTY	TOTAL SHEETS	SHEET NO.
94/90	2003-0311	COOK	976	201
STA. 1548+00	TO STA. 1560+00			
FED. ROAD DIST. NO.	ILLINOIS FED. AID PROJECT			
62583				



- NOTES:**
- SEE DRAWINGS ME-01 AND ME-02 FOR ELECTRICAL SYMBOLS AND ABBREVIATIONS.
 - UNLESS NOTED OTHERWISE, ALL ITEMS AND WORK SHOWN IN HEAVY LINE WEIGHT ON THIS DRAWING ARE PROPOSED NEW ITEMS AND WORK.
 - TEMPORARY LIGHTING SHALL BE LIVENED AND OPERATIONAL FOR 2006.
 - RAMP LIGHTING SHALL BE REMOVED WHEN RAMP ARE CLOSED.
 - A TEMPORARY CONNECTION SHALL BE PROVIDED TO MAINTAIN THE EXISTING UNDERPASS LIGHTING OVER THE LOCAL LANES AND THE PROPOSED UNDERPASS LIGHTING UNDER THE EXPRESS LANES.
 - ALL JUNCTION BOXES MOUNTED ON OVERPASS STRUCTURES SHALL BE INSTALLED AS SHOWN ON DRAWING ME-06, UNLESS NOTED OTHERWISE.
 - DUE TO CHANGES IN SLOPE AND EXCAVATION DURING CONTRACTS 62301 AND 62303, THE CONTRACTOR MAY BE REQUIRED TO REMOVE AND REPLACE TEMPORARY LIGHTING UNITS. THE COST SHALL BE INCLUDED WITH THE ITEM TEMPORARY WOOD POLE 90FT., CLASS 3, 15FT. MAST ARM.
 - GUARDRAIL SHALL REMAIN UNTIL RAMP WORK COMPLETED.

MATCH LINE STA. 1548+00
SEE SHEET RL06-39

MATCH LINE STA. 1560+00
SEE SHEET RL06-41

RL06-40

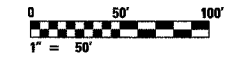
K&E
KAM ENGINEERING, INC.
CONSULTING ENGINEERS
707A Davis Road, Suite 205
Elgin, Illinois 60123-1369

REVISIONS	
NAME	DATE

ILLINOIS DEPARTMENT OF TRANSPORTATION
F.A.I. 94/90 (DAN RYAN EXPRESSWAY)
31st STREET TO I-57

**ROADWAY LIGHTING PLANS
PROPOSED IMPROVEMENTS 2006**

SCALE: 1"=50'
DATE: OCTOBER 29, 2004
DRAWN BY: BL
CHECKED BY: SM



01/24/2005 04:42 PM