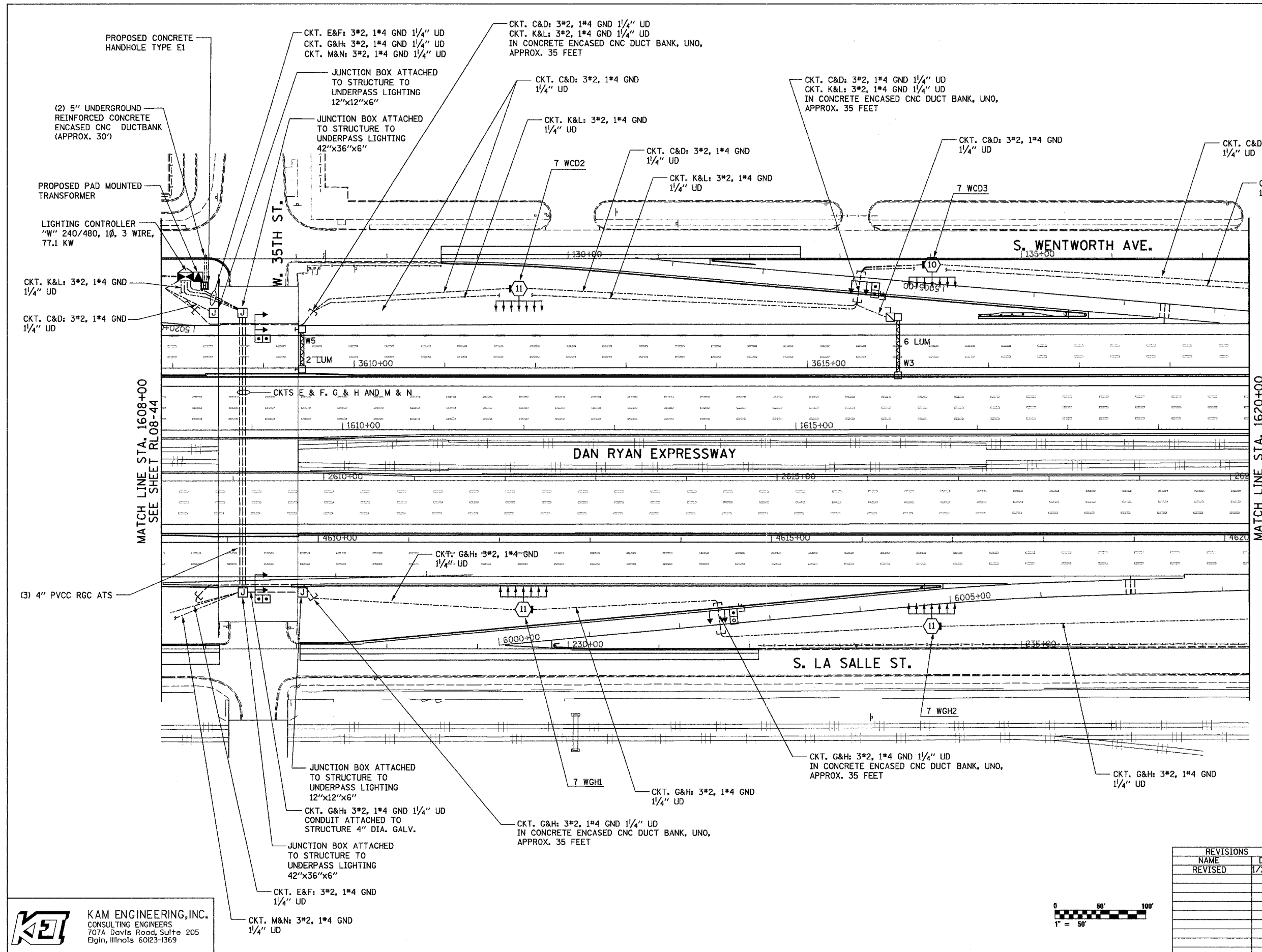


F.A.I. RTE.	SECTION	COUNTY	TOTAL SHEETS	SHEET NO.
94/90	2003-0311	COOK	976	301
STA. 1608+00		TO STA. 1620+00		
FED. ROAD DIST. NO.	ILLINOIS	FED. AID PROJECT		

62583

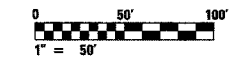


NOTES:  
1. SEE SHEET ME-01 FOR ELECTRICAL SYMBOLS, ABBREVIATIONS, AND NOTES.

MATCH LINE STA. 1608+00  
SEE SHEET RL08-44

MATCH LINE STA. 1620+00  
SEE SHEET RL08-46

**KAM ENGINEERING, INC.**  
CONSULTING ENGINEERS  
707A Davis Road, Suite 205  
Elgin, Illinois 60123-1369



REVISIONS	
NAME	DATE
REVISED	1/21/05

ILLINOIS DEPARTMENT OF TRANSPORTATION  
F.A.I. 94/90 (DAN RYAN EXPRESSWAY)  
31st STREET TO I-57

**ROADWAY LIGHTING PLANS  
FINAL IMPROVEMENTS**

SCALE: 1"=50'  
DATE: OCTOBER 29, 2004  
DRAWN BY: BL  
CHECKED BY: SM

RL08-45

01/24/2005 03:39:21 PM