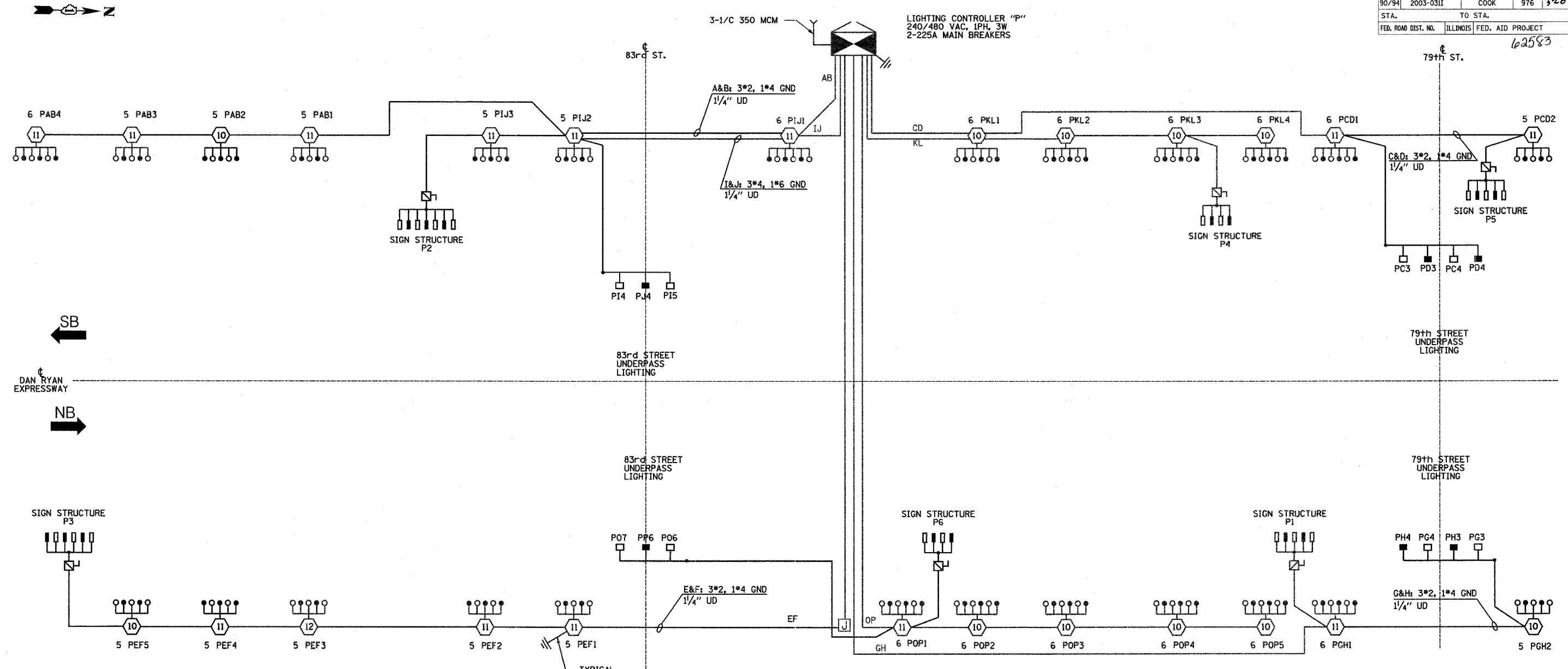


F.A.I. RTE.	SECTION	COUNTY	TOTAL SHEETS	SHEET NO.
90/94	2003-03II	COOK	976	320
STA.	TO STA.			
FED. ROAD DIST. NO.	ILLINOIS	FED. AID PROJECT		



**SINGLE LINE DIAGRAM  
LIGHTING CONTROLLER "P"**

CIRCUIT	RED PHASE		BLACK PHASE		
	AMPS	WATTS	AMPS	WATTS	
A	22.0	5,280	B	20.0	4,800
C	15.4	3,696	D	12.6	3,024
E	28.6	6,864	F	26.6	6,384
G	12.8	3,072	H	10.8	2,592
I	20.3	4,872	J	19.0	4,560
K	25.8	6,192	L	25.8	6,192
M			N		
O	31.8	7,632	P	31.8	7,632
TOTAL	156.7	37,608	TOTAL	146.6	35,184

NOTES:  
1. SEE DRAWING ME-12 FOR WIRING DIAGRAM DETAILS.

**LEGEND**

- HIGH MAST LIGHT TOWER.
- 400 W. HPS LUMINAIRE (BLACK PHASE- SOLID SYMBOL, RED PHASE-OPEN SYMBOL)
- HIGH MAST TOWER DESIGNATION.
- LIGHTED SIGN STRUCTURE WITH 170 W. FLUORESCENT LUMINAIRES, QUANTITY OF LUMINAIRES AS REQUIRED. (BLACK PHASE- SOLID SYMBOL, RED PHASE, OPEN SYMBOL)
- 3 POLE SAFETY SWITCH
- UNDERPASS LIGHTING UNIT, 70W HPS LUMINAIRE. (BLACK PHASE- SOLID SYMBOL, RED PHASE-OPEN SYMBOL)
- LIGHTING CONTROLLER
- GROUND FIELD
- ELECTRIC UTILITY SERVICE

**SINGH** 300 W. ADAMS ST.  
SINGH & ASSOCIATES, INC. CHICAGO, IL 60606  
CONSULTING ENGINEERS TEL: (312) 629-0240  
FAX: (312) 629-8449

REVISIONS	
NAME	DATE

ILLINOIS DEPARTMENT OF TRANSPORTATION  
F.A.I. 90/94 (DAN RYAN EXPRESSWAY)  
31st STREET TO I-57

**SINGLE LINE DIAGRAM  
LIGHTING CONTROLLER "P"  
PROPOSED IMPROVEMENTS 2006**

SCALE: NOT TO SCALE DRAWN BY: YJ  
DATE: OCTOBER 29, 2004 CHECKED BY: TM

J:\75\Sign\1027\35-806-04.dwg 8/21/2004 8:52:44 PM