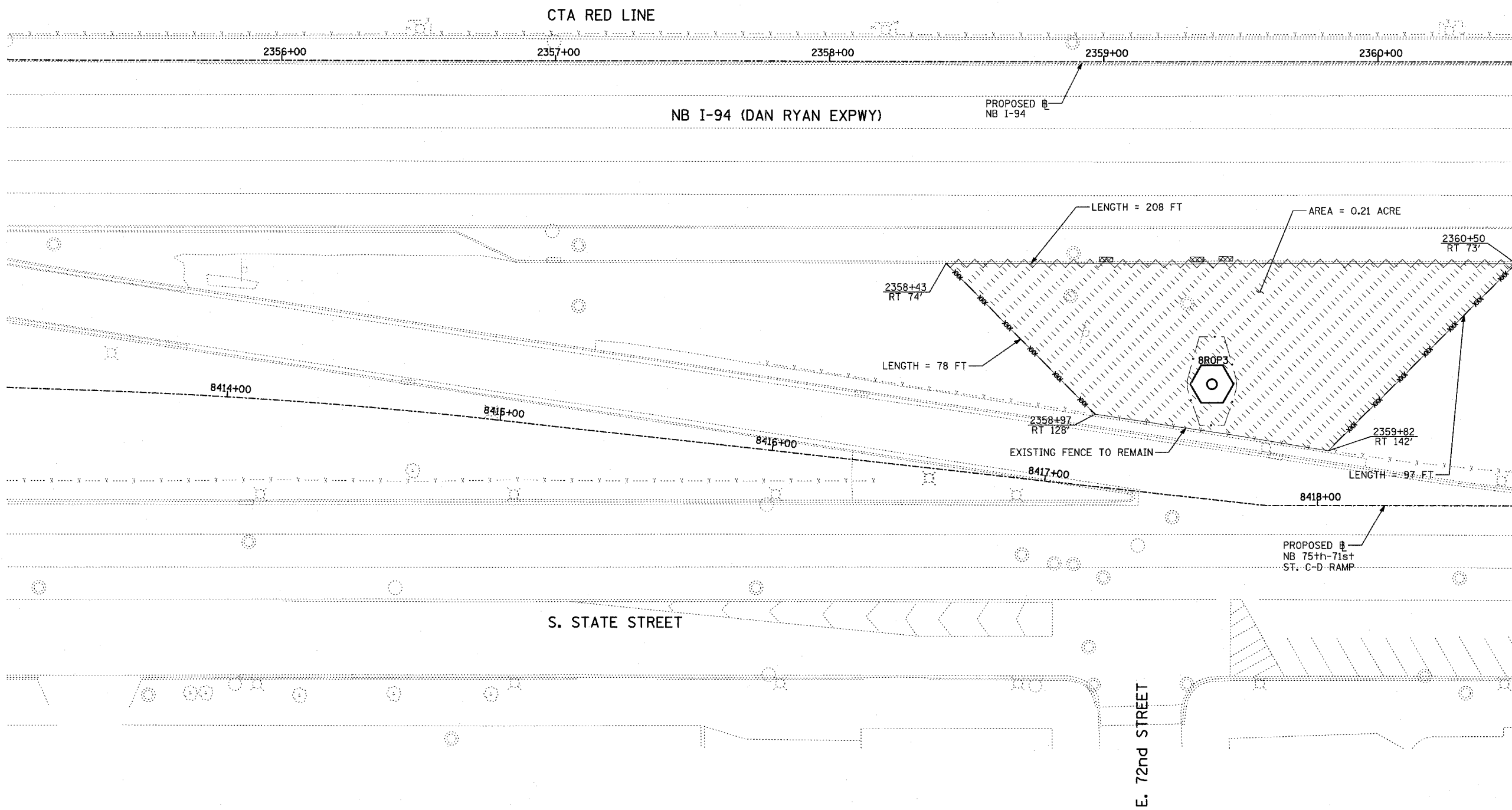
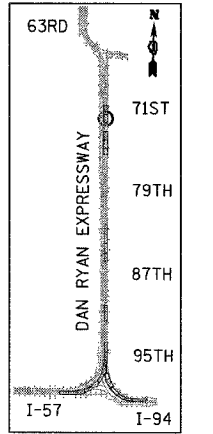


F.A.I. RTE.	SECTION	COUNTY	TOTAL SHEETS	SHEET NO.
90/94	2003-0311	COOK	976	424
STA.		TO STA.		
FED. ROAD DIST. NO.		ILLINOIS FED. AID PROJECT		

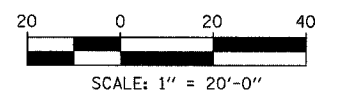
62583



MATCHLINE NB STA. 2360+50.00



LOCATION MAP



- LEGEND:**
- TEMPORARY EROSION CONTROL SEEDING
 - PERIMETER EROSION BARRIER
 - INLET FILTER, TO BE INSTALLED IN OFF PROJECT DRAINAGE STRUCTURES ACCEPTING STORMWATER RUNOFF
 - TEMPORARY FENCE (60' PER TREE)
 - LIMITS OF GRADING
 - TREE REMOVAL (UNIT) (NO UNIT SHOWN = <6)

REVISIONS	
NAME	DATE

ILLINOIS DEPARTMENT OF TRANSPORTATION
 F.A.I. 90/94 (DAN RYAN EXPRESSWAY)
 31st STREET to I-57
 EROSION CONTROL PLAN
 NB 75th TO 71st STREET RAMP
 NB I-94 STA. 2355+00.00 TO 2360+50.00

SCALE: 1"=20'
 DATE: OCTOBER 29, 2004
 DRAWN BY: RTM, JPA
 CHECKED BY: JPM, MAG

SHEET 13 OF 41

TYLIN INTERNATIONAL

17/23/2004 06:11:08 PM