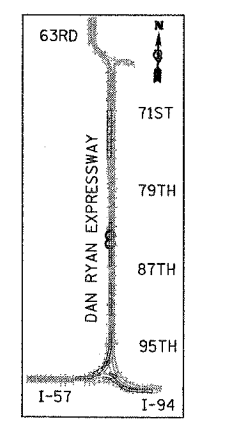
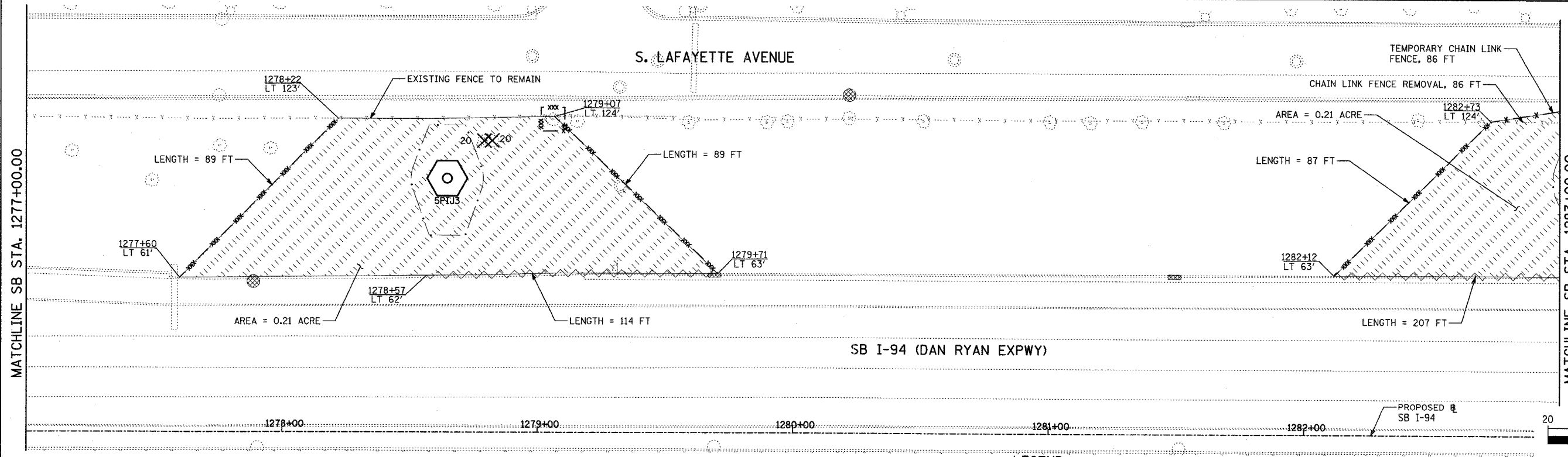
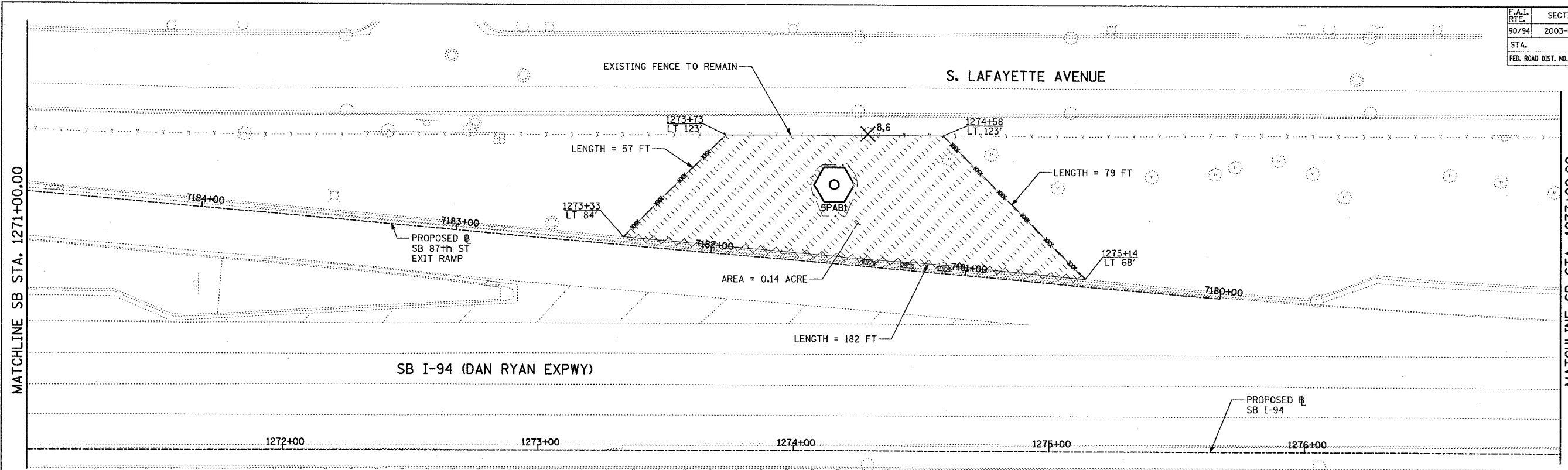
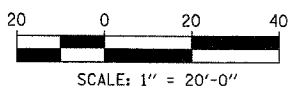


F.A.I. RTE.	SECTION	COUNTY	TOTAL SHEETS	SHEET NO.
90/94	2003-0311	COOK	476	436
STA.	TO STA.			
FED. ROAD DIST. NO.	ILLINOIS FED. AID PROJECT			

62583



LOCATION MAP



- LEGEND:**
- TEMPORARY EROSION CONTROL SEEDING
 - PERIMETER EROSION BARRIER
 - INLET FILTER, TO BE INSTALLED IN OFF-PROJECT DRAINAGE STRUCTURES ACCEPTING STORMWATER RUNOFF
 - TEMPORARY FENCE (60' PER TREE)
 - LIMITS OF GRADING
 - TREE REMOVAL (UNIT) (NO UNIT SHOWN = <6>)

REVISIONS	
NAME	DATE

SHEET 25 OF 41

ILLINOIS DEPARTMENT OF TRANSPORTATION
 F.A.I. 90/94 (DAN RYAN EXPRESSWAY)
 31st STREET TO I-57
 EROSION CONTROL PLAN
 SB 87th STREET EXIT RAMP
 SB I-94 STA. 1271+00.00 TO 1283+00.00

SCALE: 1"=20'
 DATE: OCTOBER 29, 2004

DRAWN BY: RTM, JPA
 CHECKED BY: JPM, MAG

TYLIN INTERNATIONAL