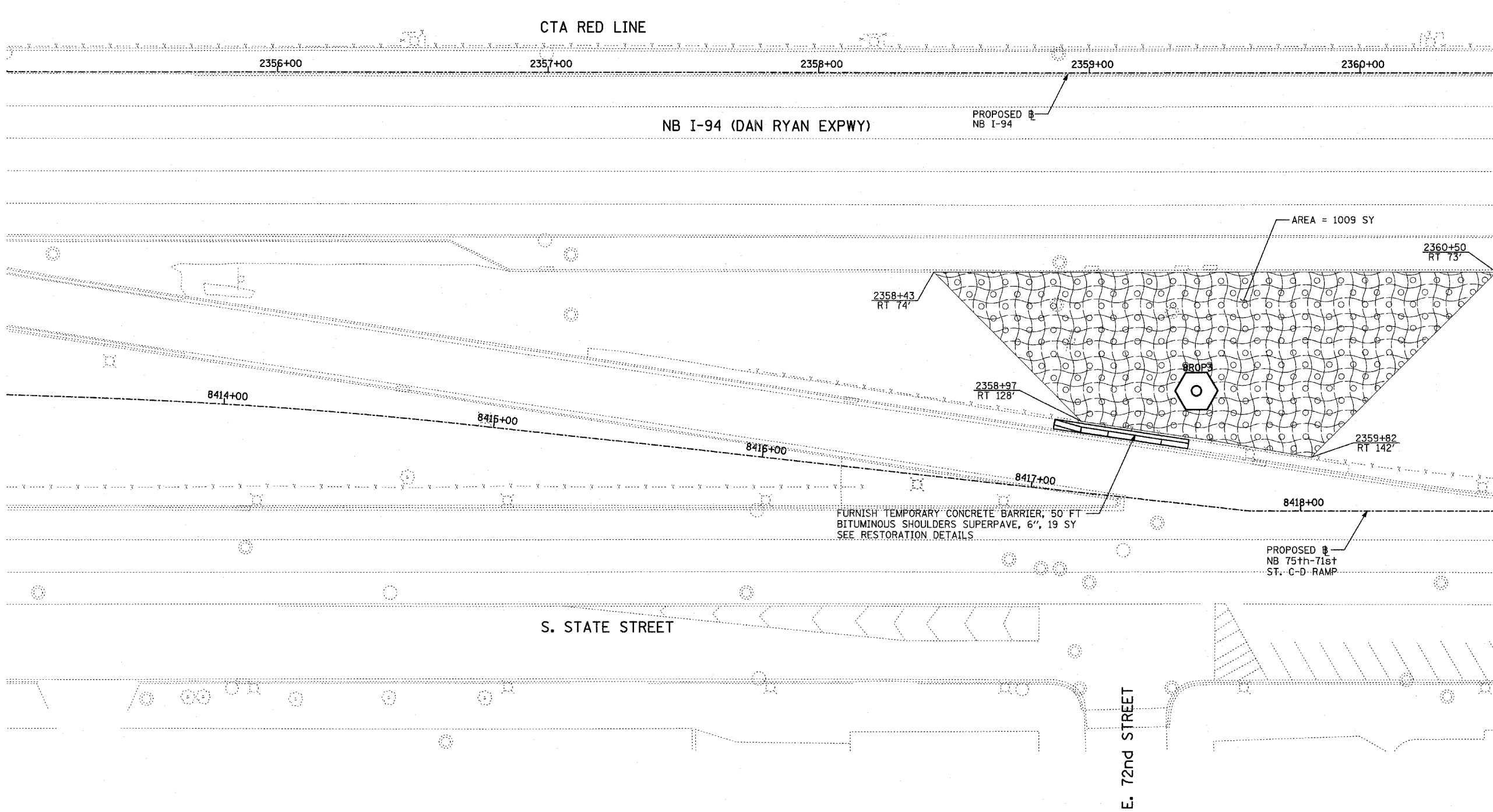
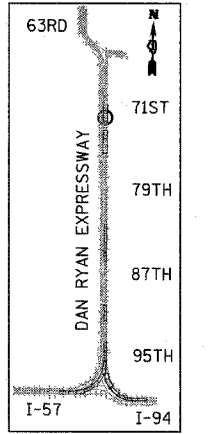


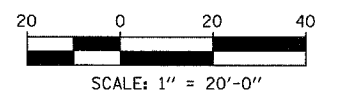
F.A.I. RTE.	SECTION	COUNTY	TOTAL SHEETS	SHEET NO.
90/94	2003-0311	COOK	976	466
STA.	TO STA.			
FED. ROAD DIST. NO.	ILLINOIS	FED. AID PROJECT		
		62583		



MATCHLINE NB STA. 2360+50.00

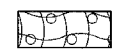


LOCATION MAP



TYLIN INTERNATIONAL

LEGEND:



EROSION CONTROL BLANKET, SEEDING, CLASS 2A, NITROGEN, PHOSPHORUS, AND POTASSIUM FERTILIZER NUTRIENTS, TOPSOIL FURNISH AND PLACE, 4"

REVISIONS	
NAME	DATE

SHEET 13 OF 41

ILLINOIS DEPARTMENT OF TRANSPORTATION
 F.A.I. 90/94 (DAN RYAN EXPRESSWAY)
 31st STREET TO I-57
 RESTORATION PLAN
 NB 75th TO 71st STREET C-D RAMP
 NB I-94 STA. 2355+00.00 TO 2360+50.00

SCALE: 1"=20'
 DATE: OCTOBER 29, 2004

DRAWN BY: RTM, JPA
 CHECKED BY: JPM, MAG

11/23/2004 06:07:48 PM