

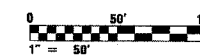
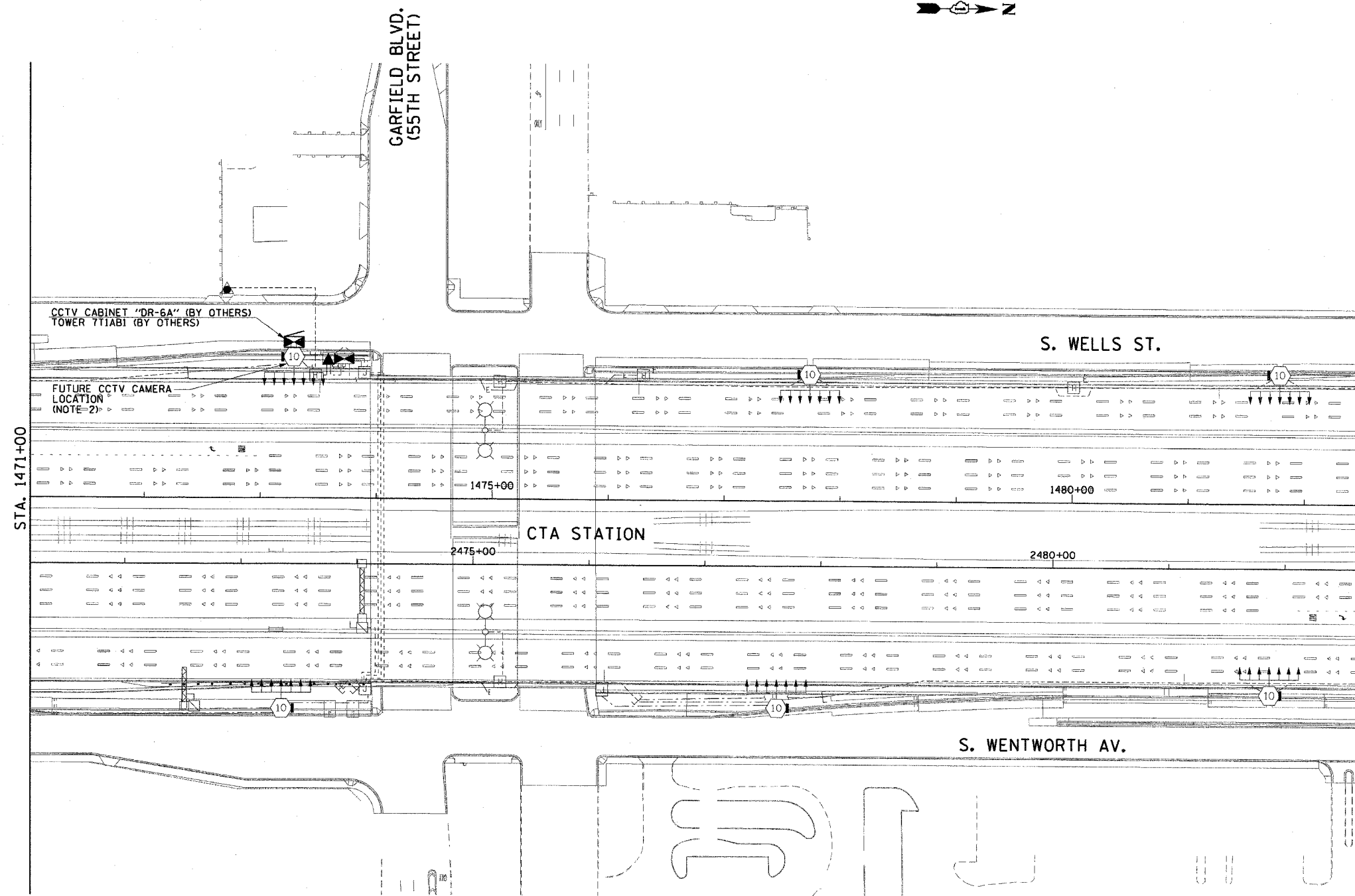
F.A.I. RTE.	SECTION	COUNTY	TOTAL SHEETS	SHEET NO.
90/94	2003-0311	COOK	976	694
STA. 1471+00.00		TO STA. 1482+50.00		
FED. ROAD DIST. NO. 1		ILLINOIS	FED. AID PROJECT	

62583

NOTES:

1. SEE DRAWINGS ME-01 AND ME-02 FOR ELECTRICAL SYMBOLS AND ABBREVIATIONS.
2. SEE DRAWING COMM-33 FOR CCTV COMMUNICATIONS SYSTEM CONDUIT AND CABLE LAYOUT
3. THIS SHEET ONLY DEPICTS INSTALLATION OF CLOSED CIRCUIT TELEVISION SYSTEM. LIGHTING SYSTEM IS SHOWN FOR INFORMATION ONLY AND SHOULD BE INSTALLED AS SHOWN ON THE LIGHTING PLANS.

THIS SHEET PROVIDED FOR REFERENCE ONLY. ALL CCTV WORK TO BE DONE UNDER A SEPARATE CONTRACT (62733)



CCTV-22

REVISIONS	
NAME	DATE

ILLINOIS DEPARTMENT OF TRANSPORTATION
F.A.I. 90/94 (DAN RYAN EXPRESSWAY)
31st STREET TO I-57

CLOSED CIRCUIT TELEVISION
SITE LAYOUT
CAMERA DR-6A

SCALE: 1"=50'
DATE: October 29, 2004

DRAWN BY: HAR
CHECKED BY: BMW

CTE ENGINEERS
CONSOER TOWNSEND ENVIRONMENTAL ENGINEERS, INC.
303 EAST WACKER DRIVE, SUITE 600
CHICAGO, ILLINOIS 60601-5212, PHONE: (312) 938-0300

10/15/2004 08:44:23 AM