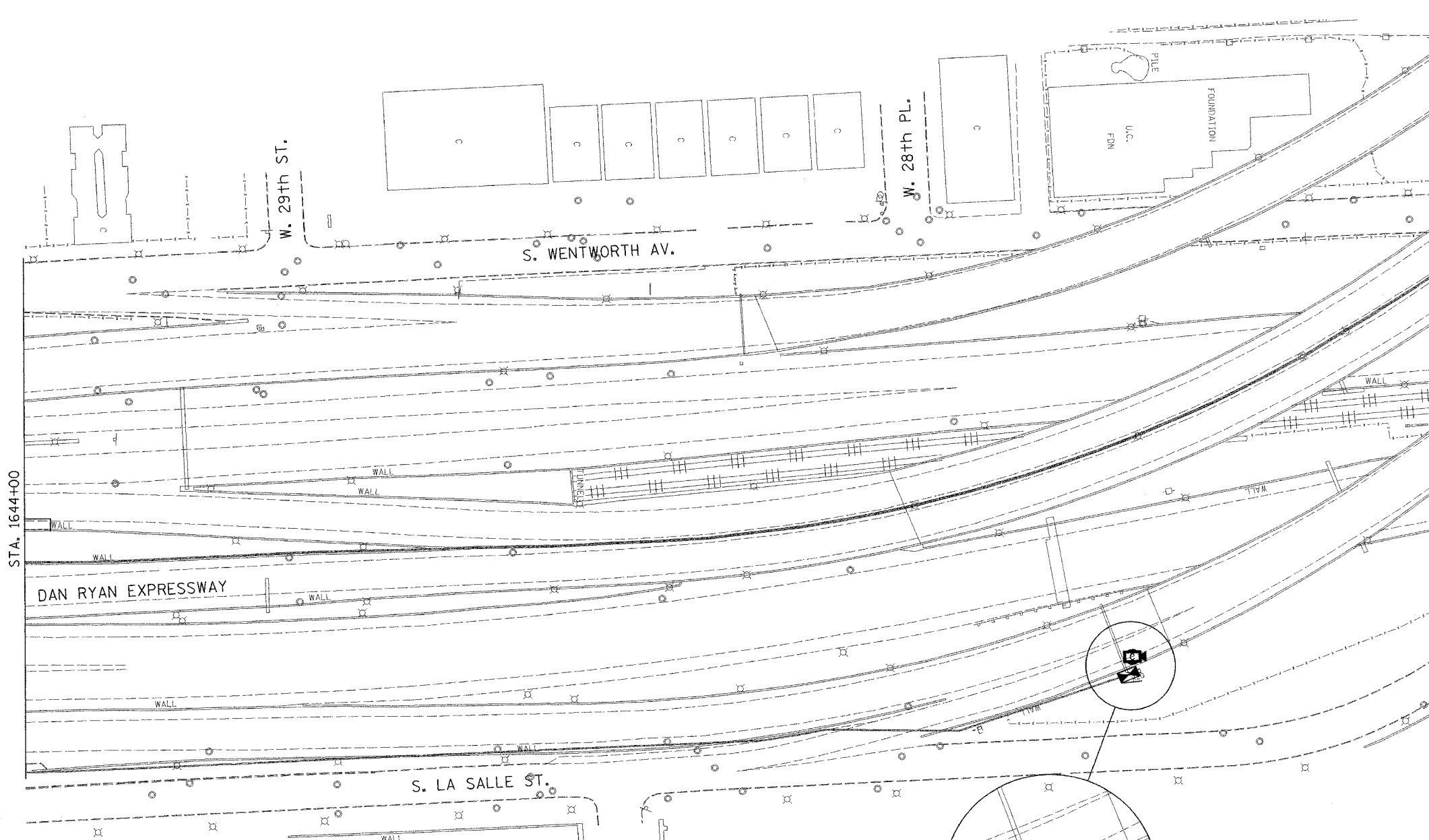
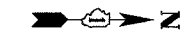


SECTION	COUNTY	TOTAL SHEETS	SHEET NO.
2003-0311	COOK	976	704
STA. 1644+00	TO STA.		
FED. ROAD DIST. NO.	ILLINOIS	FED. AID PROJECT	
62583			



- NOTES:**
- SEE DRAWINGS ME-01 AND ME-02 FOR ELECTRICAL SYMBOLS AND ABBREVIATIONS.
  - UNLESS OTHERWISE STATED, ALL NOTED CABLE AND CONDUIT TO BE FURNISHED AND INSTALLED UNDER THIS CONTRACT.
  - THIS SHEET ONLY DEPICTS INSTALLATION OF CLOSED CIRCUIT TELEVISION ELEMENTS.
  - CONTRACTOR SHALL CONNECT CAMERA POWER FEED TO EXISTING IDOT CONTROLLER CABINET X22 AS DIRECTED IN THE SPECIAL PROVISIONS.
  - SUPPORT ARM OF THE CCTV DOME CAMERA SHALL BE INSTALLED ON THE EXPRESSWAY SIDE OF THE EXTENSION POLE. SEE DRAWING DT-16 FOR CCTV CAMERA MOUNTING DETAILS ON SIGN STRUCTURE.
  - SEE DRAWING COMM-50 FOR CCTV COMMUNICATIONS SYSTEM CONDUIT AND CABLE LAYOUT.
  - SEE DRAWING DT-16 FOR CCTV CABINET MOUNTING DETAILS ON SIGN STRUCTURE.

INSTALL AND CONNECT CCTV CAMERA SYSTEM ON EXISTING SIGN STRUCTURE (NOTES 5, 6)

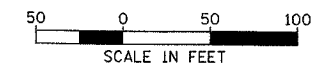
FOR POWER FEED INSTALLATION, SEE NOTE 4

INSTALL AND CONNECT CCTV CABINET EQUIPMENT IN CCTV CABINET DR-2B

INSTALL CCTV CABINET DR-2B ON EXISTING SIGN STRUCTURE (NOTE 7)

(2) 1/C #12, 1/C #12 GND, 1/4" UD IN 2" RGC ATS

(2) 1/C #12, 1/C #12 GND, 1/4" UD



CCTV-32

**Edwards AND Kelcey**  
 ONE NORTH FRANKLIN  
 CHICAGO, IL 60606  
 PHONE: (312) 251-3000  
 FAX: (312) 251-3015  
 WEB: WWW.EKCORP.COM

REVISIONS		DATE
NAME		

ILLINOIS DEPARTMENT OF TRANSPORTATION  
 F.A.I. 94/90 (DAN RYAN EXPRESSWAY)  
 31st STREET TO I-57

CLOSED CIRCUIT TELEVISION  
 SITE LAYOUT  
 CAMERA DR-2B

SCALE: 1"=50'  
 DATE: October 29, 2004

DRAWN BY: DHI  
 CHECKED BY: M.JL

10/14/2004 09:23:40 AM