

SECTION	COUNTY	TOTAL SHEETS	SHEET NO.
2003-0311	COOK	976	732
STA. 1321+00 TO STA. 1334+00			
FED. ROAD DIST. NO. ILLINOIS FED. AID PROJECT 62583			



TRVD-SB-007  
STA1325+00  
(5) 4/C #18  
2" GSC ENCASED, BY OTHERS  
2/C #4, 1/C #6 GND  
2" GSC ENCASED, BY OTHERS  
2" GSC ENCASED, BY OTHERS  
(SPARE)  
(2) 4/C #18  
2" GSC IN TRENCH  
3/C #12  
2" GSC IN TRENCH  
(1) 4/C #18  
2" GSC IN TRENCH

MATCHLINE STA. 1334+00  
SEE SHEET DET-20

MATCHLINE STA. 1321+00  
SEE SHEET DET-18

76th ST.

DRILL CDOT HANDHOLE

TRVD-NB-007  
STA2331+50  
2" GSC IN TRENCH  
HH 1918, TYPE S1  
STA 68+76

2" GSC PUSHED

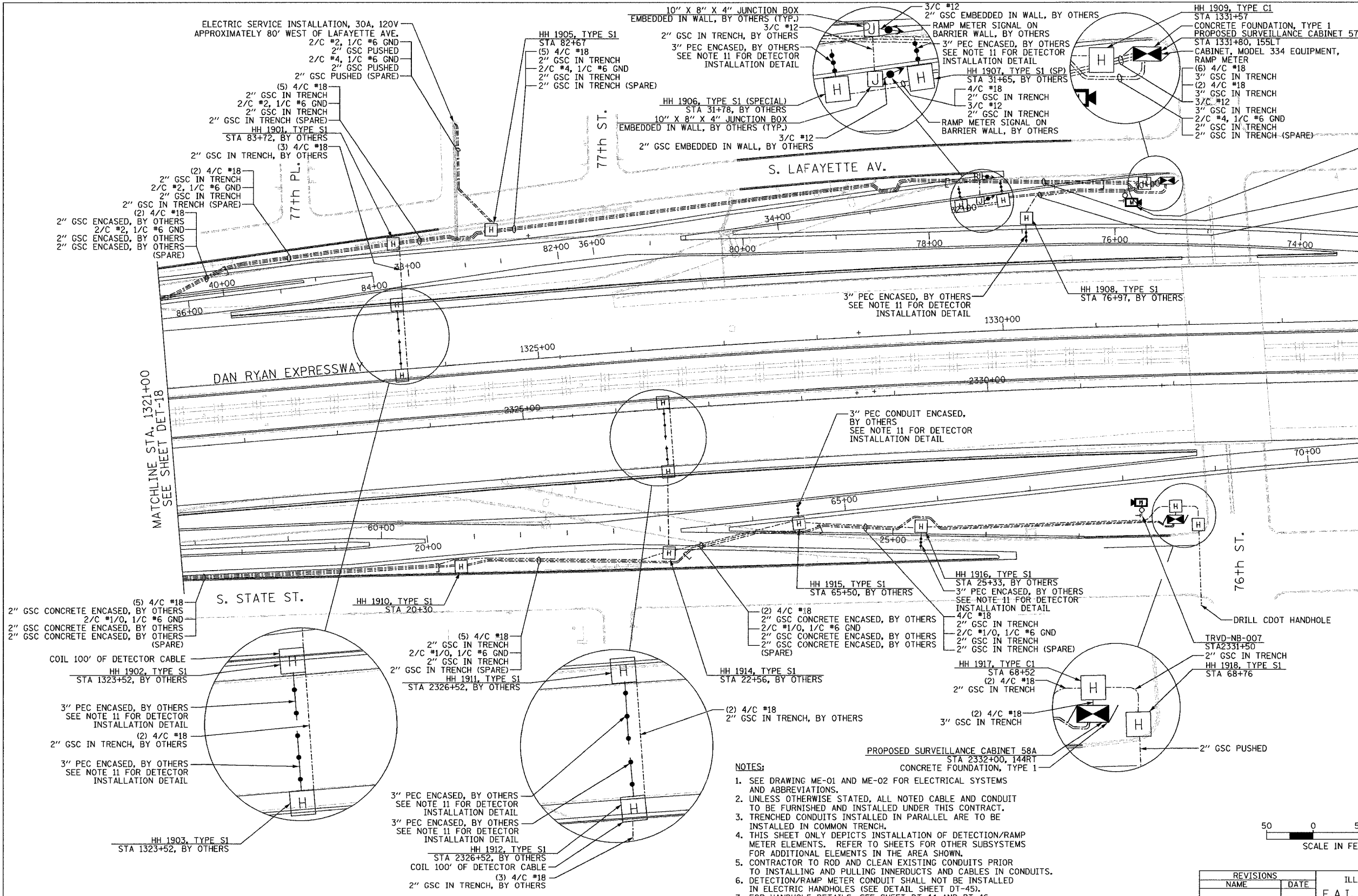
PROPOSED SURVEILLANCE CABINET 58A  
STA 2332+00, 144RT  
CONCRETE FOUNDATION, TYPE 1

50 0 50 100  
SCALE IN FEET

ILLINOIS DEPARTMENT OF TRANSPORTATION  
F.A.I. 94/90 (DAN RYAN EXPRESSWAY)  
31st STREET TO I-57  
SURVEILLANCE SYSTEM STATION  
RAMP METERING AND DETECTOR SYSTEM  
79TH ST. SITE LAYOUT, DET-19, DET-19A,  
DET-20, DET-20A, RM-08, RM-08A  
SCALE: 1"=50' DRAWN BY: CJH  
DATE: October 29, 2004 CHECKED BY: CC

REVISIONS	
NAME	DATE

- NOTES:
- SEE DRAWING ME-01 AND ME-02 FOR ELECTRICAL SYSTEMS AND ABBREVIATIONS.
  - UNLESS OTHERWISE STATED, ALL NOTED CABLE AND CONDUIT TO BE FURNISHED AND INSTALLED UNDER THIS CONTRACT.
  - TRENCHED CONDUITS INSTALLED IN PARALLEL ARE TO BE INSTALLED IN COMMON TRENCH.
  - THIS SHEET ONLY DEPICTS INSTALLATION OF DETECTION/RAMP METER ELEMENTS. REFER TO SHEETS FOR OTHER SUBSYSTEMS FOR ADDITIONAL ELEMENTS IN THE AREA SHOWN.
  - CONTRACTOR TO ROD AND CLEAN EXISTING CONDUITS PRIOR TO INSTALLING AND PULLING INNERDUCTS AND CABLES IN CONDUITS.
  - DETECTION/RAMP METER CONDUIT SHALL NOT BE INSTALLED IN ELECTRIC HANDHOLES (SEE DETAIL SHEET DT-45).
  - FOR HANDHOLE DETAILS, SEE SHEET DT-44 AND DT-46.
  - FOR WIRING DETAILS, SEE SHEETS DET-48 THROUGH DET-53.
  - FOR TEMPORARY DETECTION DETAILS SEE SHEETS DT-53 TO DT-55.
  - PROPOSED GEOMETRY SHOWN ON THIS SHEET IS PRELIMINARY. CONTRACTOR SHALL COORDINATE WITH CONTRACTS 62694, 62695, 62592, AND 62593 TO DETERMINE FINAL GEOMETRY FOR THE AREA SHOWN.
  - FOR DETECTOR PROBE INSTALLATION DETAILS, SEE SHEETS DT-23 AND DT-28.



**Edwards and Kelcey**  
 ONE NORTH FRANKLIN  
 CHICAGO, IL 60606  
 PHONE: (312) 251-3000  
 FAX: (312) 251-3015  
 WEB: WWW.EKCORP.COM

1/23/2004 10:25:16 AM