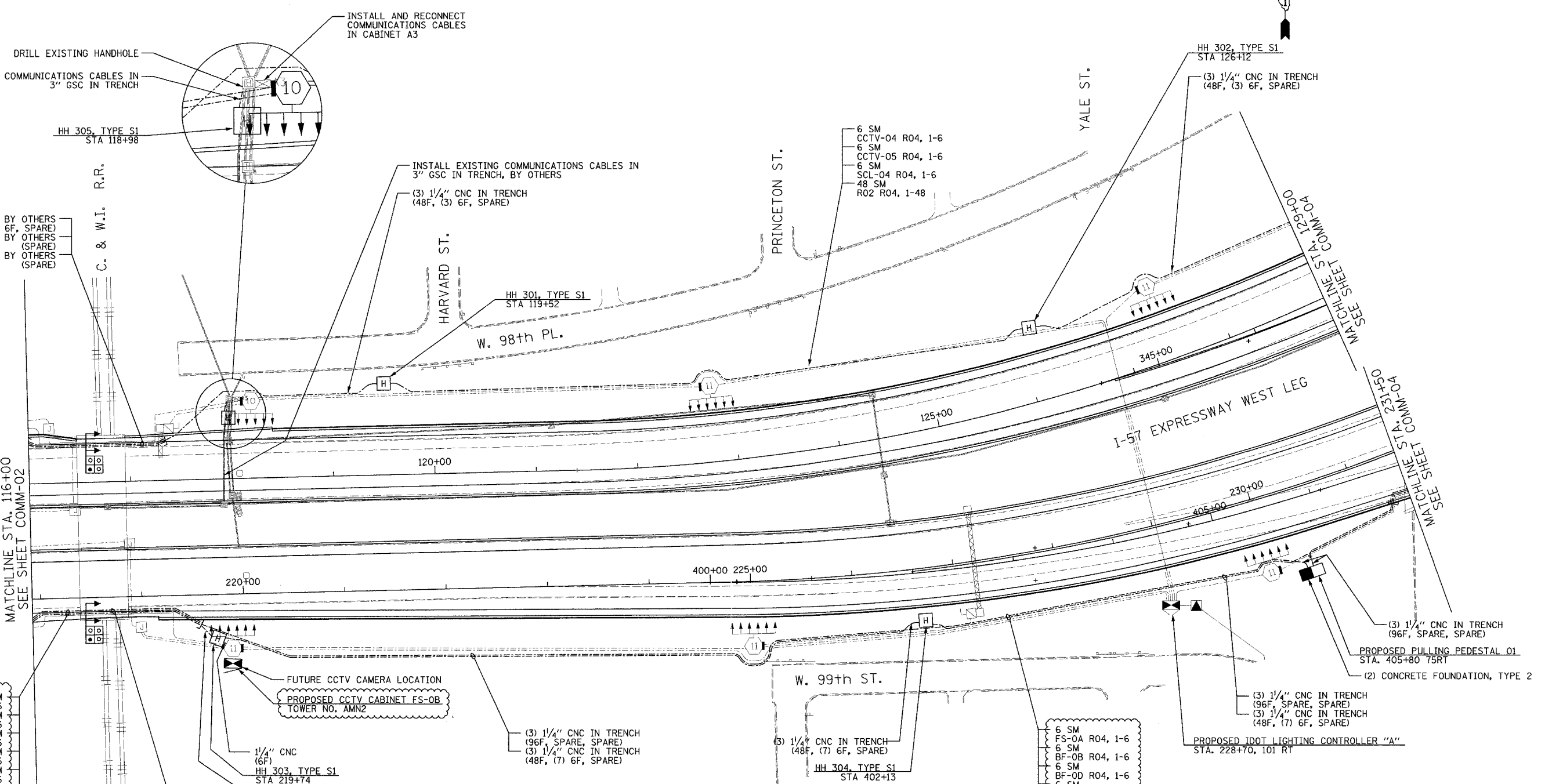


SECTION	COUNTY	TOTAL SHEETS	SHEET NO.
2003-0311	COOK	976	769
STA. 116+00.00 TO STA. 129+00/231+50			
FED. ROAD DIST. NO.	ILLINOIS	FED. AID PROJECT	
62583			



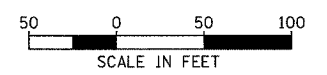
4" CNC CONCRETE ENCASED, BY OTHERS
 (3) 1/4" CNC (48F, (3) 6F, SPARE)
 4" CNC CONCRETE ENCASED, BY OTHERS (SPARE)
 4" CNC CONCRETE ENCASED, BY OTHERS (SPARE)

DR-9C R04, 1-6
 DR-10B R04, 1-6
 BF-0A R04, 1-6
 BF-0D R04, 1-6
 BF-0C R04, 1-6
 BF-0B R04, 1-6
 FS-0A R04, 1-6
 FS-0B R04, 1-6
 48 SM
 R03 R04, 1-48
 96 SM
 R03 R04, 1-96

6 SM
 FS-0A R04, 1-6
 6 SM
 BF-0B R04, 1-6
 6 SM
 BF-0D R04, 1-6
 6 SM
 BF-0A R04, 1-6
 6 SM
 DR-10B R04, 1-6
 6 SM
 DR-9C R04, 1-6
 48 SM
 R03 R04, 1-48
 96 SM
 R03 R04, 1-96

FUTURE CCTV CAMERA LOCATION
 PROPOSED CCTV CABINET FS-0B
 TOWER NO. AMN2

- NOTES:
- SEE DRAWING ME-01 AND ME-02 FOR ELECTRICAL SYSTEMS AND ABBREVIATIONS.
 - UNLESS OTHERWISE STATED, ALL NOTED CABLE AND CONDUIT TO BE FURNISHED AND INSTALLED UNDER THIS CONTRACT.
 - TRENCHED CONDUITS INSTALLED IN PARALLEL ARE TO BE INSTALLED IN COMMON TRENCH.
 - THIS SHEET ONLY DEPICTS INSTALLATION OF COMMUNICATIONS ELEMENTS. REFER TO SHEETS FOR OTHER SUBSYSTEMS FOR ADDITIONAL ELEMENTS IN THE AREA SHOWN.
 - CONTRACTOR TO ROD AND CLEAN EXISTING CONDUITS PRIOR TO INSTALLING AND PULLING INNERDUCTS AND CABLES IN CONDUITS.
 - COMMUNICATIONS CONDUIT SHALL NOT BE INSTALLED IN ELECTRIC HANDHOLES (SEE DETAIL SHEET DT-45).
 - FOR HANDHOLE DETAILS, SEE SHEET DT-44 AND DT-46.



REVISIONS	NAME	DATE
REVISION 1		12/17/04

ILLINOIS DEPARTMENT OF TRANSPORTATION
 F.A.I. 94/90 (DAN RYAN EXPRESSWAY)
 31st STREET TO I-57
 COMMUNICATIONS BACKBONE CONDUIT
 AND CABLE LAYOUT
 SCALE: 1"=50'
 DATE: October 29, 2004
 DRAWN BY: YAD
 CHECKED BY: JEZ

Edwards AND Kelcey
 ONE NORTH FRANKLIN
 CHICAGO, IL 60606
 PHONE: (312) 251-3000
 FAX: (312) 251-3015
 WEB: WWW.EDKORP.COM

12/15/2004 01:46:59 PM