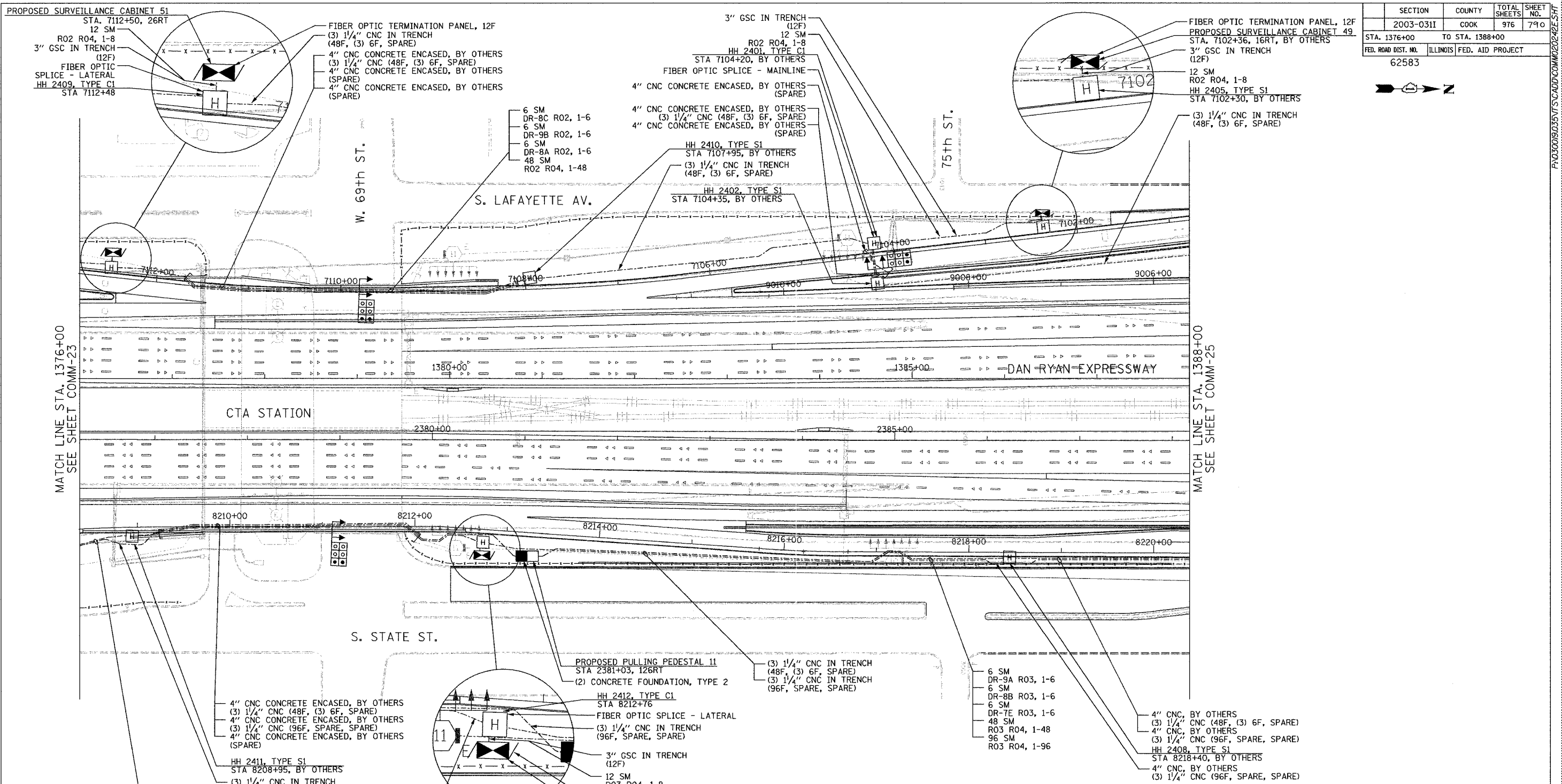


SECTION	COUNTY	TOTAL SHEETS	SHEET NO.
2003-0311	COOK	976	790
STA. 1376+00	TO STA. 1388+00		
FED. ROAD DIST. NO.	ILLINOIS FED. AID PROJECT		
62583			



MATCH LINE STA. 1376+00
SEE SHEET COMM-23

MATCH LINE STA. 1388+00
SEE SHEET COMM-25

4" CNC CONCRETE ENCASED, BY OTHERS
(3) 1/4" CNC (48F, (3) 6F, SPARE)
4" CNC CONCRETE ENCASED, BY OTHERS
(3) 1/4" CNC (96F, SPARE, SPARE)
4" CNC CONCRETE ENCASED, BY OTHERS
(SPARE)

HH 2411, TYPE S1
STA 8208+95, BY OTHERS
(3) 1/4" CNC IN TRENCH
(96F, SPARE, SPARE)

(3) 1/4" CNC IN TRENCH
(48F, (3) 6F, SPARE)
(3) 1/4" CNC IN TRENCH
(96F, SPARE, SPARE)

(3) 1/4" CNC IN TRENCH
(48F, (3) 6F, SPARE)

PROPOSED PULLING PEDESTAL 11
STA 2381+03, 126RT
(2) CONCRETE FOUNDATION, TYPE 2

HH 2412, TYPE C1
STA 8212+76
FIBER OPTIC SPLICE - LATERAL
(3) 1/4" CNC IN TRENCH
(96F, SPARE, SPARE)

3" GSC IN TRENCH
(12F)
12 SM
R03 R04, 1-8

PROPOSED SURVEILLANCE CABINET 50
STA. 8212+75, 28RT
FIBER OPTIC TERMINATION PANEL, 12F

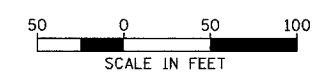
(3) 1/4" CNC IN TRENCH
(48F, (3) 6F, SPARE)
(3) 1/4" CNC IN TRENCH
(96F, SPARE, SPARE)

6 SM
DR-9A R03, 1-6
6 SM
DR-8B R03, 1-6
6 SM
DR-7E R03, 1-6
48 SM
R03 R04, 1-48
96 SM
R03 R04, 1-96

4" CNC, BY OTHERS
(3) 1/4" CNC (48F, (3) 6F, SPARE)
4" CNC, BY OTHERS
(3) 1/4" CNC (96F, SPARE, SPARE)
HH 2408, TYPE S1
STA 8218+40, BY OTHERS
4" CNC, BY OTHERS
(3) 1/4" CNC (96F, SPARE, SPARE)

NOTES:

- SEE DRAWING ME-01 AND ME-02 FOR ELECTRICAL SYSTEMS AND ABBREVIATIONS.
- UNLESS OTHERWISE STATED, ALL NOTED CABLE AND CONDUIT TO BE FURNISHED AND INSTALLED UNDER THIS CONTRACT.
- TRENCHED CONDUITS INSTALLED IN PARALLEL ARE TO BE INSTALLED IN COMMON TRENCH.
- THIS SHEET ONLY DEPICTS INSTALLATION OF COMMUNICATIONS ELEMENTS. REFER TO SHEETS FOR OTHER SUBSYSTEMS FOR ADDITIONAL ELEMENTS IN THE AREA SHOWN.
- CONTRACTOR TO ROD AND CLEAN EXISTING CONDUITS PRIOR TO INSTALLING AND PULLING INNERDUCTS AND CABLES IN CONDUITS.
- COMMUNICATIONS CONDUIT SHALL NOT BE INSTALLED IN ELECTRIC HANDHOLES (SEE DETAIL SHEET DT-45).
- FOR HANDHOLE DETAILS, SEE SHEET DT-44 AND DT-46.



SCALE IN FEET
COMM-24

REVISIONS	
NAME	DATE

ILLINOIS DEPARTMENT OF TRANSPORTATION
F.A.I. 94/90 (DAN RYAN EXPRESSWAY)
31st STREET TO I-57

COMMUNICATIONS BACKBONE CONDUIT
AND CABLE LAYOUT

SCALE: 1"=50'
DATE: October 29, 2004
DRAWN BY: DHI
CHECKED BY: BA

Edwards AND Kelcey
ONE NORTH FRANKLIN
CHICAGO, IL 60606
PHONE: (312) 251-3000
FAX: (312) 251-3015
WEB: WWW.EDKORP.COM

11/23/2004 02:27:59 PM