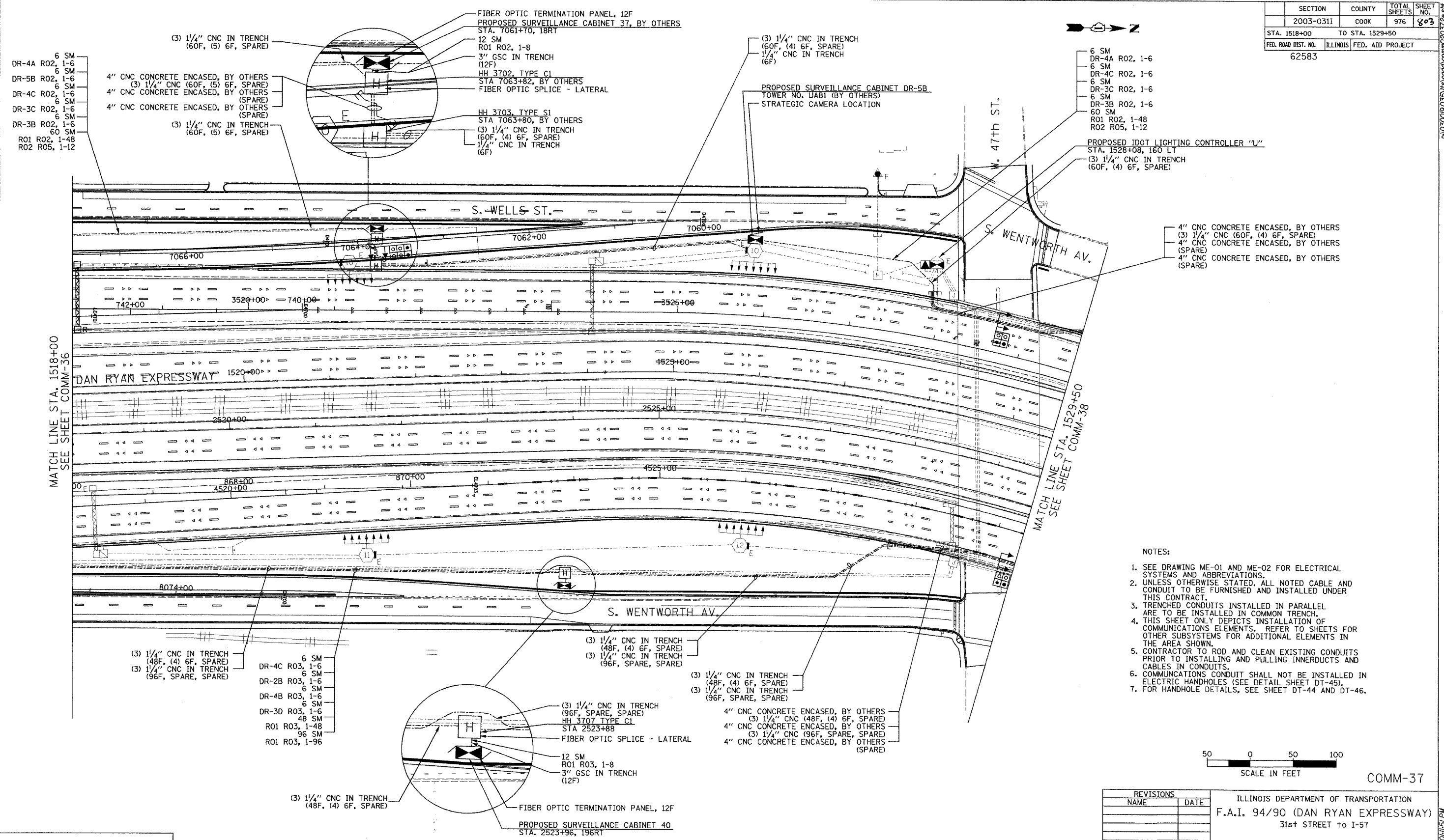


SECTION	COUNTY	TOTAL SHEETS	SHEET NO.
2003-0311	COOK	976	803
STA. 1518+00 TO STA. 1529+50		ILLINOIS FED. AID PROJECT	
FED. ROAD DIST. NO. 62583			



- 6 SM
- DR-4A R02, 1-6
- 6 SM
- DR-5B R02, 1-6
- 6 SM
- DR-4C R02, 1-6
- 6 SM
- DR-3C R02, 1-6
- 6 SM
- DR-3B R02, 1-6
- 60 SM
- R01 R02, 1-48
- R02 R05, 1-12

- (3) 1/4" CNC IN TRENCH (60F, (5) 6F, SPARE)
- 4" CNC CONCRETE ENCASED, BY OTHERS (3) 1/4" CNC (60F, (5) 6F, SPARE)
- 4" CNC CONCRETE ENCASED, BY OTHERS (SPARE)
- 4" CNC CONCRETE ENCASED, BY OTHERS (SPARE)
- (3) 1/4" CNC IN TRENCH (60F, (5) 6F, SPARE)

- FIBER OPTIC TERMINATION PANEL, 12F
- PROPOSED SURVEILLANCE CABINET 37, BY OTHERS
- STA. 7061+70, 18RT
- 12 SM
- R01 R02, 1-8
- 3" GSC IN TRENCH (12F)
- HH 3702, TYPE C1
- STA 7063+82, BY OTHERS
- FIBER OPTIC SPLICE - LATERAL
- HH 3703, TYPE S1
- STA 7063+80, BY OTHERS
- (3) 1/4" CNC IN TRENCH (60F, (4) 6F, SPARE)
- 1/4" CNC IN TRENCH (6F)

- (3) 1/4" CNC IN TRENCH (60F, (4) 6F, SPARE)
- 1/4" CNC IN TRENCH (6F)

- PROPOSED SURVEILLANCE CABINET DR-5B
- TOWER NO. UABI (BY OTHERS)
- STRATEGIC CAMERA LOCATION

- 6 SM
- DR-4A R02, 1-6
- 6 SM
- DR-4C R02, 1-6
- 6 SM
- DR-3C R02, 1-6
- 6 SM
- DR-3B R02, 1-6
- 60 SM
- R01 R02, 1-48
- R02 R05, 1-12

- PROPOSED IDOT LIGHTING CONTROLLER "U"
- STA. 1528+08, 160 LT
- (3) 1/4" CNC IN TRENCH (60F, (4) 6F, SPARE)

- 4" CNC CONCRETE ENCASED, BY OTHERS
- (3) 1/4" CNC (60F, (4) 6F, SPARE)
- 4" CNC CONCRETE ENCASED, BY OTHERS (SPARE)
- 4" CNC CONCRETE ENCASED, BY OTHERS (SPARE)

- (3) 1/4" CNC IN TRENCH (48F, (4) 6F, SPARE)
- (3) 1/4" CNC IN TRENCH (96F, SPARE, SPARE)

- 6 SM
- DR-4C R03, 1-6
- 6 SM
- DR-2B R03, 1-6
- 6 SM
- DR-4B R03, 1-6
- 6 SM
- DR-3D R03, 1-6
- 48 SM
- R01 R03, 1-48
- 96 SM
- R01 R03, 1-96

- (3) 1/4" CNC IN TRENCH (48F, (4) 6F, SPARE)
- (3) 1/4" CNC IN TRENCH (96F, SPARE, SPARE)

- (3) 1/4" CNC IN TRENCH (48F, (4) 6F, SPARE)
- (3) 1/4" CNC IN TRENCH (96F, SPARE, SPARE)

- 4" CNC CONCRETE ENCASED, BY OTHERS (3) 1/4" CNC (48F, (4) 6F, SPARE)
- 4" CNC CONCRETE ENCASED, BY OTHERS (3) 1/4" CNC (96F, SPARE, SPARE)
- 4" CNC CONCRETE ENCASED, BY OTHERS (SPARE)

- (3) 1/4" CNC IN TRENCH (96F, SPARE, SPARE)
- HH 3707, TYPE C1
- STA 2523+88
- FIBER OPTIC SPLICE - LATERAL
- 12 SM
- R01 R03, 1-8
- 3" GSC IN TRENCH (12F)
- FIBER OPTIC TERMINATION PANEL, 12F
- PROPOSED SURVEILLANCE CABINET 40
- STA. 2523+96, 196RT

- (3) 1/4" CNC IN TRENCH (48F, (4) 6F, SPARE)

- NOTES:
- SEE DRAWING ME-01 AND ME-02 FOR ELECTRICAL SYSTEMS AND ABBREVIATIONS.
 - UNLESS OTHERWISE STATED, ALL NOTED CABLE AND CONDUIT TO BE FURNISHED AND INSTALLED UNDER THIS CONTRACT.
 - TRENCHED CONDUITS INSTALLED IN PARALLEL ARE TO BE INSTALLED IN COMMON TRENCH.
 - THIS SHEET ONLY DEPICTS INSTALLATION OF COMMUNICATIONS ELEMENTS. REFER TO SHEETS FOR OTHER SUBSYSTEMS FOR ADDITIONAL ELEMENTS IN THE AREA SHOWN.
 - CONTRACTOR TO ROD AND CLEAN EXISTING CONDUITS PRIOR TO INSTALLING AND PULLING INNERDUCTS AND CABLES IN CONDUITS.
 - COMMUNICATIONS CONDUIT SHALL NOT BE INSTALLED IN ELECTRIC HANDHOLES (SEE DETAIL SHEET DT-45).
 - FOR HANDHOLE DETAILS, SEE SHEET DT-44 AND DT-46.



COMM-37

REVISIONS	
NAME	DATE

ILLINOIS DEPARTMENT OF TRANSPORTATION
 F.A.I. 94/90 (DAN RYAN EXPRESSWAY)
 31st STREET TO I-57
 COMMUNICATIONS BACKBONE CONDUIT
 AND CABLE LAYOUT
 SCALE: 1"=50'
 DATE: October 29, 2004
 DRAWN BY: DHI
 CHECKED BY: BA

Edwards AND Kelcey
 ONE NORTH FRANKLIN
 CHICAGO, IL 60606
 PHONE: (312) 251-3000
 FAX: (312) 251-3015
 WEB: WWW.EKCORP.COM

10/14/2004 09:15:15 PM