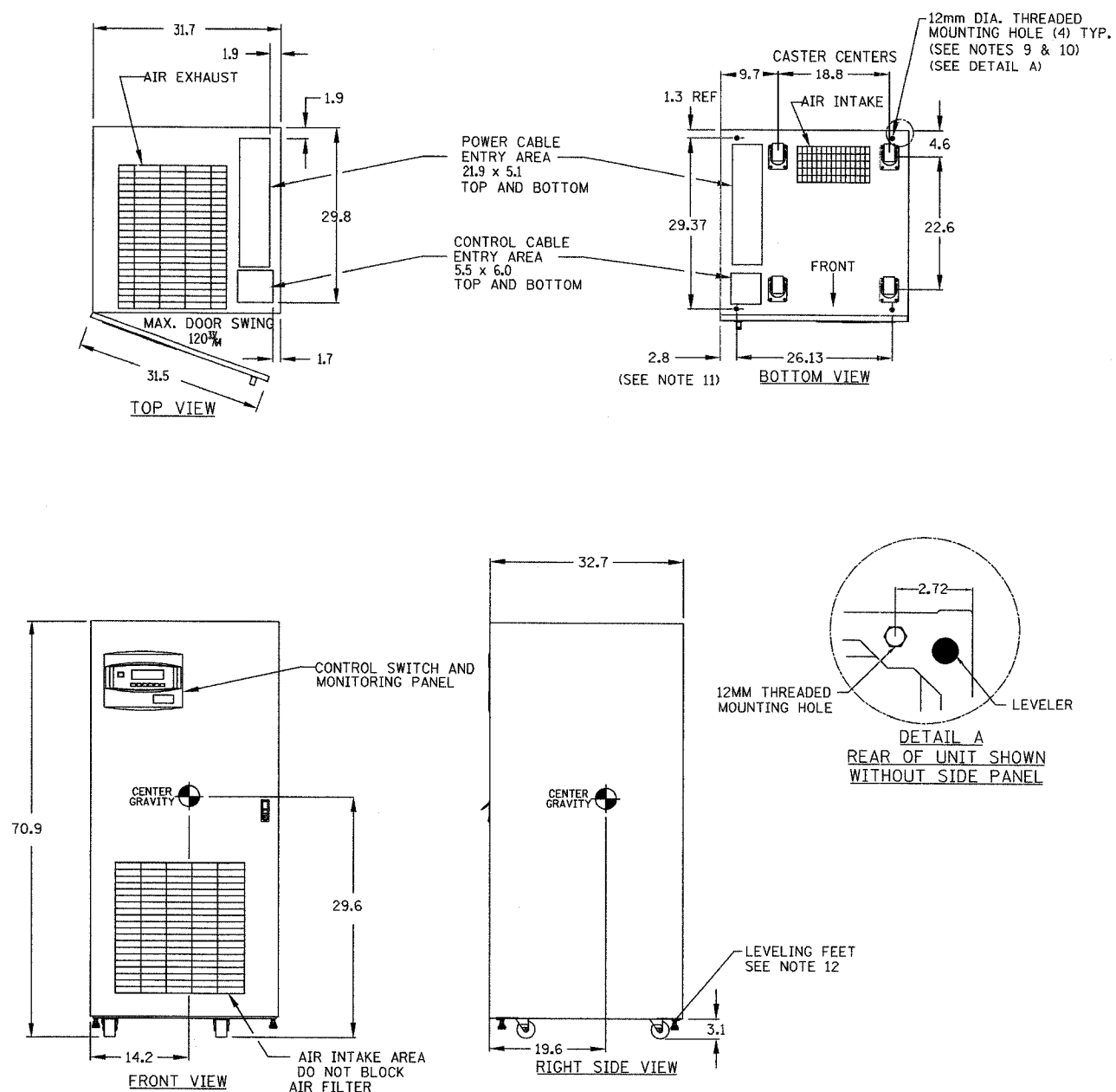


SECTION	COUNTY	TOTAL SHEETS	SHEET NO.
2003-0311	COOK	976	913
STA. TO STA.		FED. AID PROJECT	
62583		ILLINOIS	



NOTES:

- ALL DIMENSIONS ARE IN INCHES.
- 24" MINIMUM CLEARANCE ABOVE UNIT REQUIRED FOR AIR EXHAUST.
- INSTALLATION AND SERVICE ACCESS REQUIRED IN FRONT ONLY. RH SIDE ACCESS RECOMMENDED FOR MAXIMUM EASE OF INSTALLATION.
- KEEP CABINET WITHIN 15 DEG. OF VERTICAL WHILE HANDLING.
- TOP AND BOTTOM CABLE ENTRY AVAILABLE THROUGH REMOVABLE ACCESS PLATES. REMOVE PUNCH TO SUIT CONDUIT SIZE AND REPLACE.
- COLOR - IBM OFF WHITE.
- UNIT BOTTOM IS STRUCTURALLY ADEQUATE FOR FORKLIFT HANDLING.
- OPEN DOOR TO REPLACE AIR FILTER, DISPOSABLE TYPE. SIZE 1 x 25 x 25
- THREADED MOUNTING HOLES USED FOR SEISMIC ANCHORING OR FLOOR STAND. NOTE, IF FLOOR STAND IS USED THE WEIGHT OF THE UNIT MUST BE SUPPORTED UNDER ALL CASTERS.
- EACH MOUNTING LOCATION IS SUPPORTED BY (2) 10 GA. (.135") GALVANIZED STEEL. THE THREADED 12MM INSERT IS APPROX. 3/4" DEEP. MOUNTING BOLTS MUST BE THREADED INTO UNIT MOUNTING HOLES FROM UNDERNEATH UNIT BASE.
- INCLUDES SIDE PANEL. REFER TO DETAIL A FOR DIMENSION TO FRAME WITH SIDE PANEL REMOVED. SIDE PANELS ARE REMOVED BETWEEN ADJACENT UNITS WHICH ARE BOLTED TOGETHER.
- LEVELING FEET ARE NOT DESIGNED TO CARRY THE FULL WEIGHT OF THE CABINET. FINGER-TIGHT LEVELER AGAINST THE FLOOR. THEN TIGHTEN WITH A WRENCH LESS THAN 2 TURNS FOR FRICTION FIT AGAINST FLOOR.

KVA RATING	VOLTAGE		WEIGHT		HEAT REJECTION BTU/HR	COOLING AIR CFM
	INPUT	OUTPUT	LBS	KG		
40	208	208	2200	1000	11000	720

Edwards AND Kelcey
 ONE NORTH FRANKLIN
 CHICAGO, IL 60606
 PHONE: (312) 251-3000
 FAX: (312) 251-3015
 WEB: WWW.EKCORP.COM

DT-12F

REVISIONS	
NAME	DATE

ILLINOIS DEPARTMENT OF TRANSPORTATION
 F.A.I. 94/90 (DAN RYAN EXPRESSWAY)
 31st STREET to I-57

OUTLINE DRAWING
 40 KVA UPS MODULE
 NPOWER

SCALE: NOT TO SCALE DRAWN BY: SST
 DATE: October 29, 2004 CHECKED BY: CS

10/15/2004 11:53:44 AM