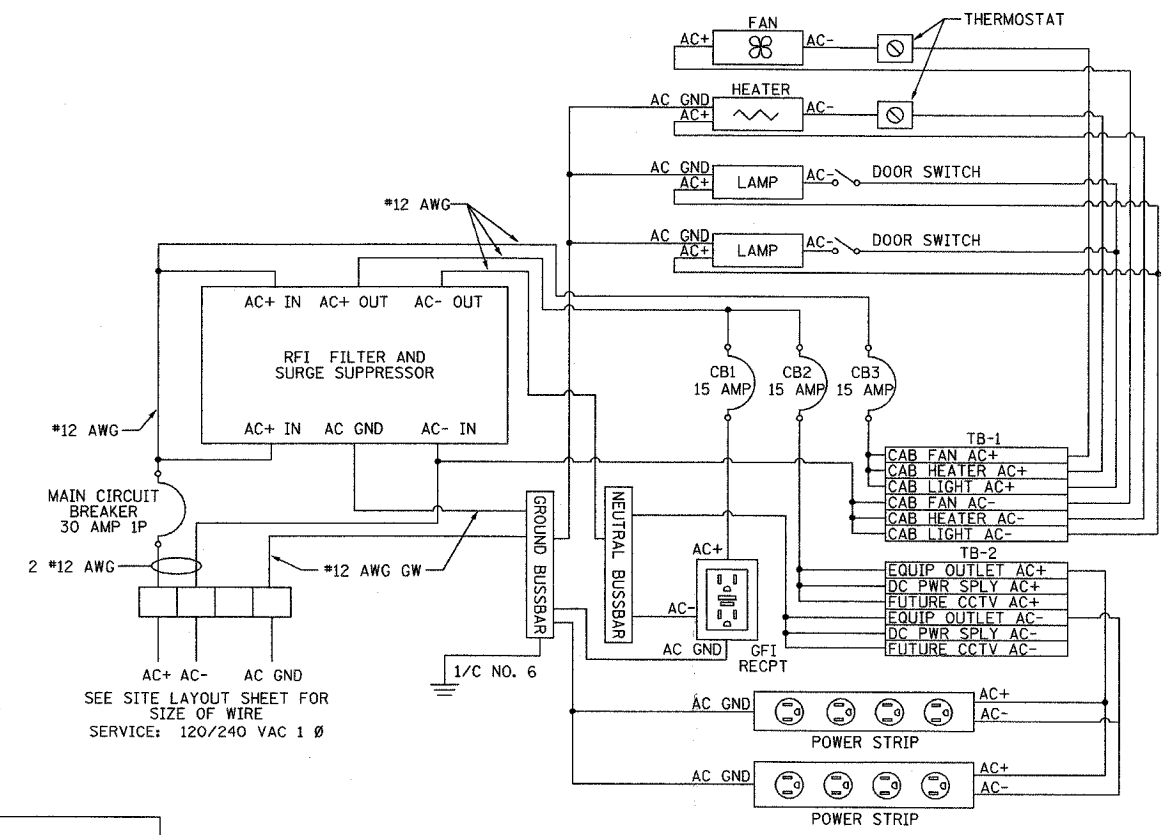
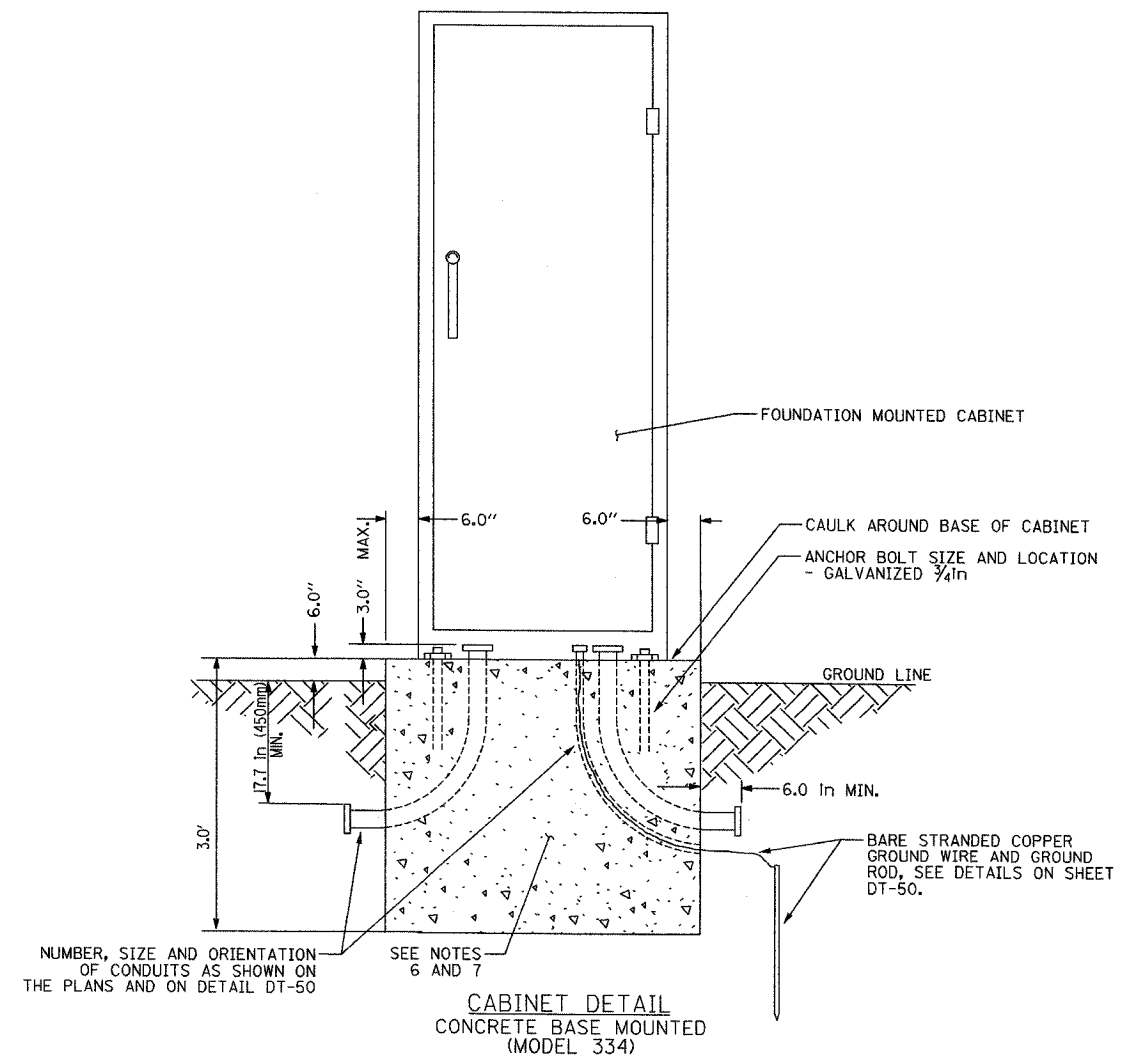
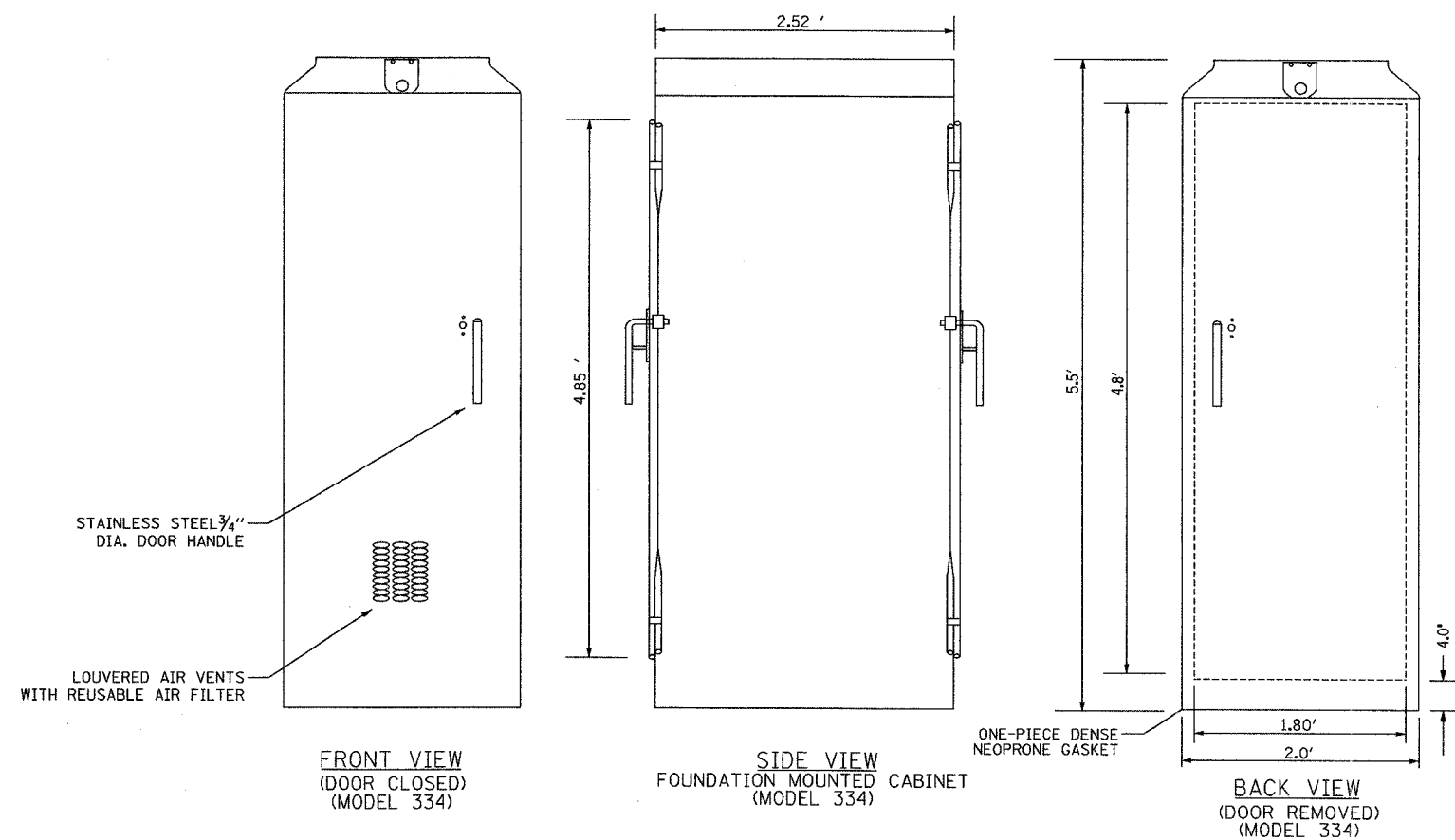


SECTION	COUNTY	TOTAL SHEETS	SHEET NO.
2003-031I	COOK	976	443
STA. TO STA.		FED. ROAD DIST. NO. ILLINOIS FED. AID PROJECT	
		62583	



- NOTES**
- REFER TO SPECIAL PROVISIONS FOR CABINET DETAILS AND ADDITIONAL REQUIREMENTS.
 - CABINET ENTRIES INCLUDE VERTICAL ARRANGEMENT FOR MAJOR EQUIPMENT ITEMS ONLY.
 - INSTALL ADDITIONAL ITEMS ON SIDE AND BACK PANELS PER THE SPECIAL PROVISIONS.
 - THE CONTRACTOR SHALL INSTALL INSULATED BUSHINGS AND DUCT SEALANT AT ALL CONDUIT BEND TERMINATIONS IN FOUNDATIONS.
 - CONCRETE BASE TO BE FORMED AT LEAST 6.0 IN ABOVE THE GROUND SURFACE.
 - CONCRETE BASE MUST BE CAST IN PLACE.
 - ALL WORK INDICATED SHALL BE PAID FOR UNDER ITEM CABINET, MODEL 334 EXCLUSIVE OF THE CONCRETE FOUNDATION.
 - CABINET BOTTOM CONFIGURATION SHALL BE AS DIRECTED BY THE ENGINEER.

Edwards AND Kelcey
 ONE NORTH FRANKLIN
 CHICAGO, IL 60606
 PHONE: (312) 251-3000
 FAX: (312) 251-3015
 WEB: WWW.EKCORP.COM

SURVEILLANCE CABINET POWER DISTRIBUTION ASSEMBLY (PDA)
 NOT TO SCALE

REVISIONS	
NAME	DATE

ILLINOIS DEPARTMENT OF TRANSPORTATION
 F.A.I. 94/90 (DAN RYAN EXPRESSWAY)
 31st STREET to I-57

CABINET, MODEL 334 DETAILS

SCALE: NTS
 DATE: October 29, 2004

DRAWN BY: MJL
 CHECKED BY: GFR

10/15/2004 03:02:24 PM