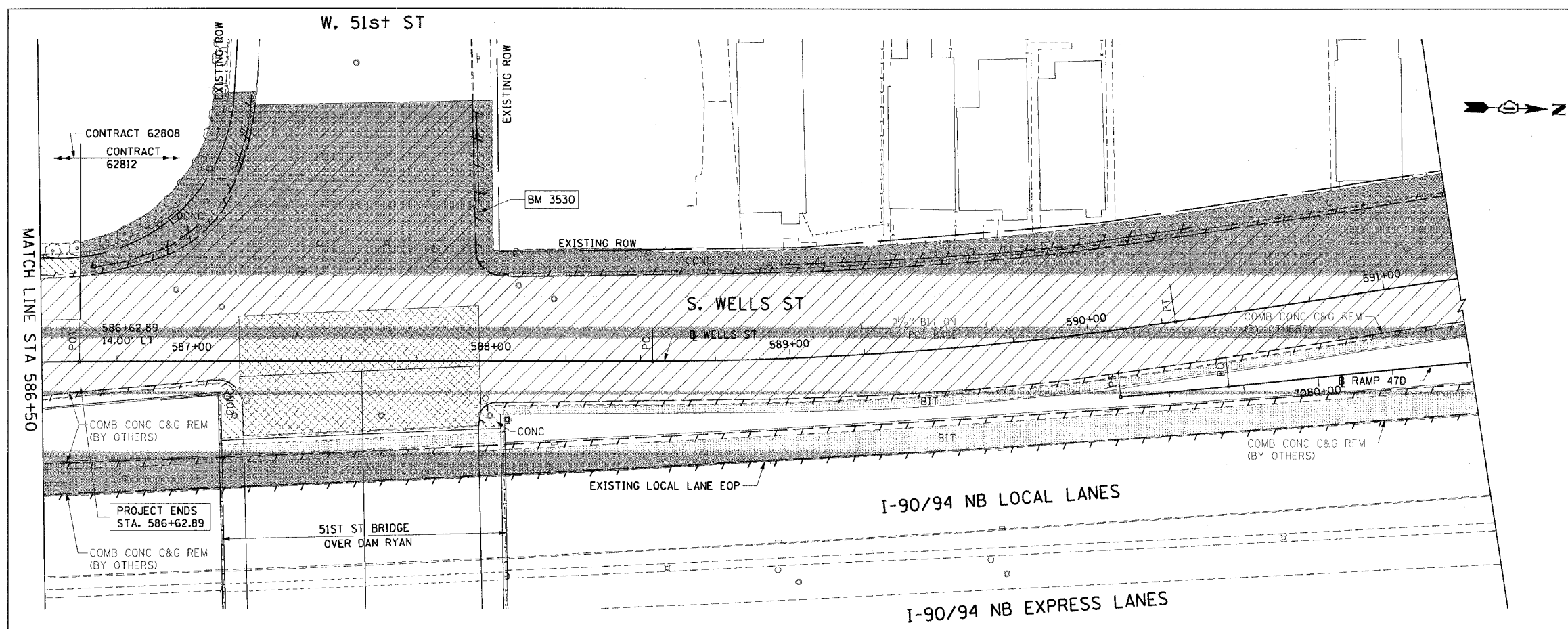


F.A.I. RTE.	SECTION	COUNTY	TOTAL SHEETS	SHEET NO.
90/94	2004-069RS	COOK	61	26
STA. 586+50		TO STA. 591+25		
FED. ROAD DIST. NO. 1 ILLINOIS FED. AID PROJECT				

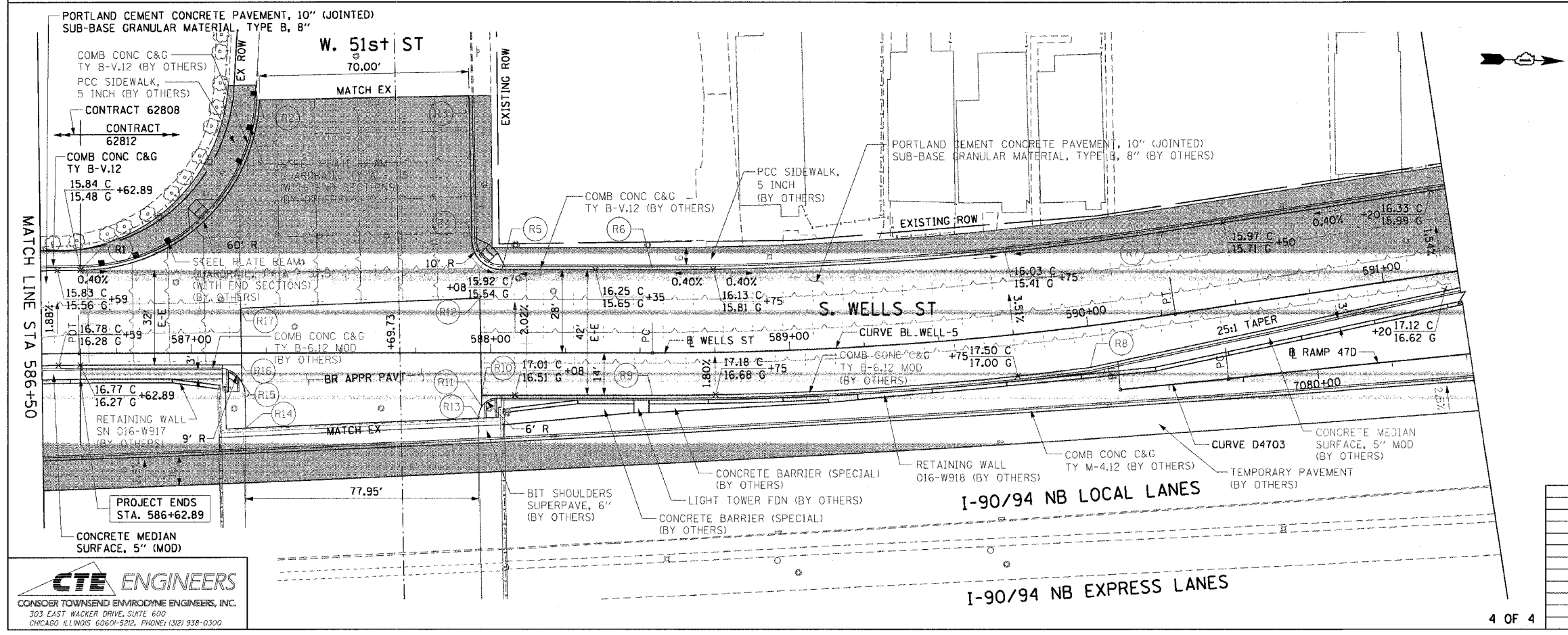
62808



- LEGEND:**
- PAVEMENT REMOVAL
  - MEDIAN REMOVAL
  - LINEAR REMOVALS
  - SIDEWALK REMOVAL
  - DRIVEWAY PAVEMENT REMOVAL
  - WORK TO BE DONE BY OTHERS

- NOTES:**
- CONTRACTOR SHALL COORDINATE WITH CONTRACT 62806 FOR ROADWAY LIGHTING REMOVALS AND INSTALLATIONS.
  - SEE DRAINAGE AND UTILITY SHEETS FOR REMOVALS AND IMPROVEMENTS.
  - CONTRACTOR SHALL COORDINATE WITH CONTRACT 62798 FOR FRONTAGE ROAD SIGNING.
  - ALL DRIVEWAYS SHOWN ARE CONCRETE UNLESS NOTED OTHERWISE.

**EXISTING CONDITIONS AND REMOVAL PROPOSED IMPROVEMENTS**



- LEGEND:**
- TEMPORARY PAVEMENT
  - WORK TO BE DONE BY OTHERS

- NOTES:**
- SEE ALIGNMENT PLANS FOR CURVE DATA.
  - SEE ROADWAY DETAIL SHEETS FOR CONCRETE MEDIAN SURFACE, 5" (MODIFIED) DETAILS.
  - CONTRACTOR SHALL COORDINATE WITH CONTRACT 62795 FOR SIDEWALK AND DRIVEWAY IMPROVEMENTS.
  - CONTRACTOR SHALL COORDINATE WITH CONTRACT 62586 FOR RETAINING WALL AND FRONTAGE ROAD IMPROVEMENTS.

PT.	STATION	OFFSET	PT.	STATION	OFFSET
R1	586+62.89	28.00' LT	R10	587+96.60	14.00' RT
R2	587-22.80	84.72' -	R11	587-96.71	17.90' RT
R3	587-92.78	86.12' -	R12	587-95.68	18.37' LT
R4	587-93.75	37.80' -	R13	587-95.86	21.66' RT
R5	588-03.75	28.00' LT	R14	587-17.36	24.97' R1
R6	588-54.10	28.00' -	R15	587+16.17	9.39' RT
R7	590-29.55	28.00' LT	R16	587-16.03	4.00' RT
R8	589+99.14	14.00' RT	R17	587+15.69	15.00' LI
R9	588+54.10	14.00' RT			

REVISIONS	
NAME	DATE

ILLINOIS DEPARTMENT OF TRANSPORTATION  
 F.A.I. 90/94 (DAN RYAN EXPRESSWAY)  
 53rd ST TO 51st ST (WELLS STREET)

**EXISTING AND PROPOSED ROADWAY PLANS  
 WELLS STREET**

SCALE: 1"=20'  
 DATE: December 17, 2004  
 DRAWN BY: PHP  
 CHECKED BY: JAL

**CTE ENGINEERS**  
 CONSER TOWNSEND ENVIRONMENTAL ENGINEERS, INC.  
 303 EAST WACKER DRIVE, SUITE 600  
 CHICAGO, ILLINOIS 60601-5202, PHONE: (312) 938-0300

12/15/2004 4:18:02 PM