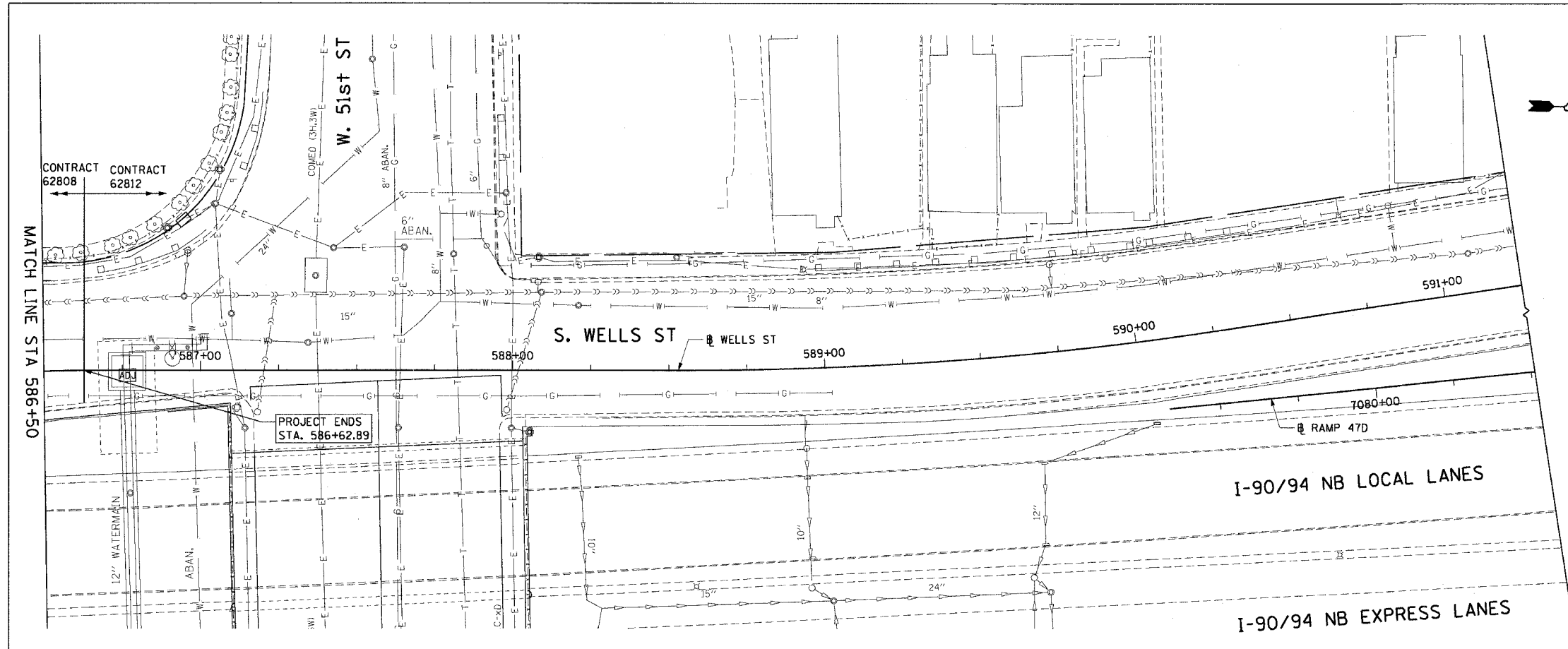
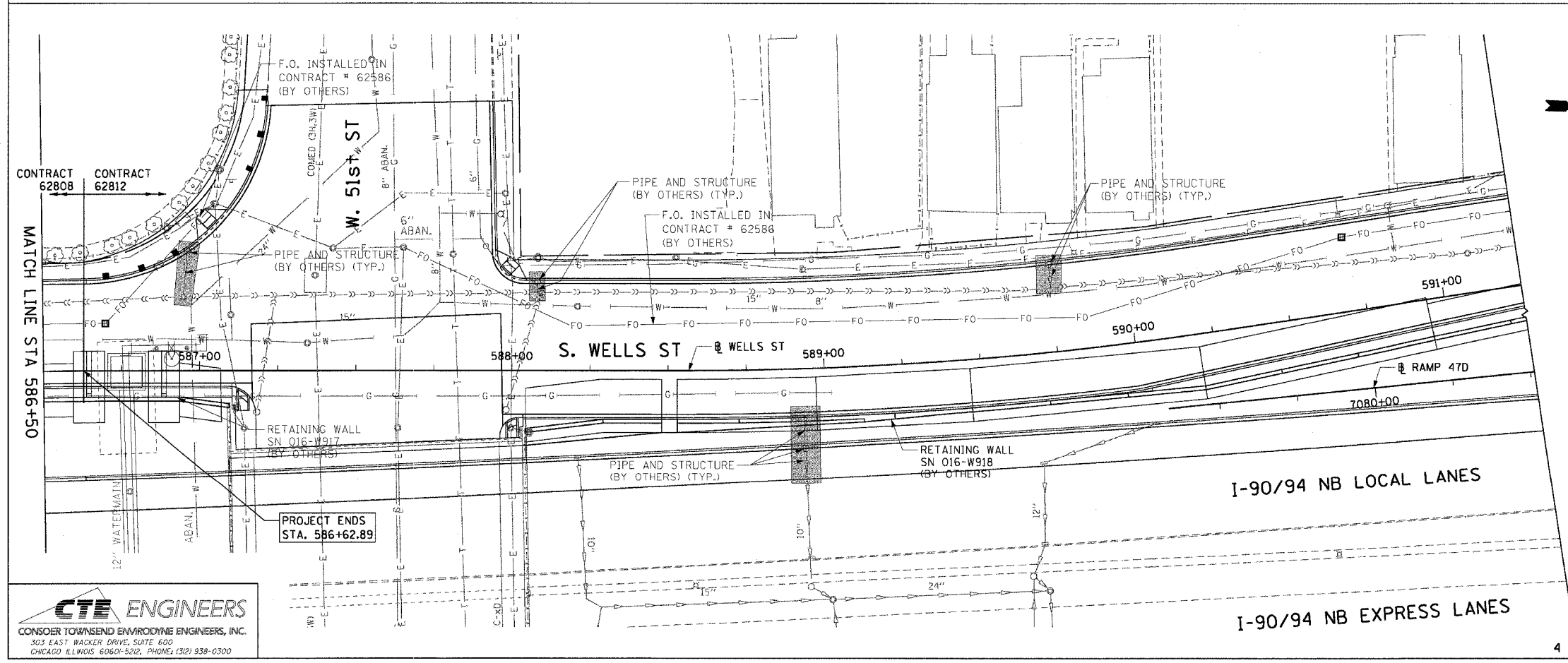


F.A.I. RTE.	SECTION	COUNTY	TOTAL SHEETS	SHEET NO.
90/94	2004-069RS	COOK	61	33
STA. 586+50		TO STA. 586+62.89		
FED. ROAD DIST. NO. 1		ILLINOIS		FED. AID PROJECT

62808



- LEGEND: EXISTING**
- INLET
  - CATCH BASIN
  - MANHOLE
  - STORM SEWER
  - COMBINED SEWER
  - PIPE UNDERDRAIN
  - [R] STRUCTURE TO BE REMOVED
  - [AD] STRUCTURE TO BE ADJUSTED
  - //// STORM SEWER REMOVAL
  - //// COMBINED SEWER REMOVAL



- EXISTING CONDITIONS AND REMOVAL**
- PROPOSED IMPROVEMENTS**
- LEGEND: PROPOSED**
- INLET
  - CATCH BASIN
  - MANHOLE
  - STORM SEWER
  - COMBINED SEWER
  - PIPE UNDERDRAIN
  - PROPOSED SWALE
  - ⊕ INLET FILTERS
  - HANDHOLE
  - ⊙ (EA 01) PROPOSED STORM SEWER PIPE
  - ⊙ (EA 01) PROPOSED STRUCTURE
  - WORK TO BE DONE BY OTHERS

**NOTES:**  
1. SEE DRAINAGE SCHEDULES FOR STRUCTURE AND PIPE INFORMATION.

REVISIONS	
NAME	DATE

ILLINOIS DEPARTMENT OF TRANSPORTATION  
F.A.I. 90/94 (DAN RYAN EXPRESSWAY)  
53rd ST TO 51st ST (WELLS STREET)

**DRAINAGE AND UTILITY PLANS**  
WELLS STREET

SCALE: 1"=20'  
DATE: December 17, 2004

DRAWN BY: PHP  
CHECKED BY: JB

**CTE ENGINEERS**  
CONSER TOWNSEND ENVIRONMENTAL ENGINEERS, INC.  
303 EAST WACKER DRIVE, SUITE 600  
CHICAGO ILLINOIS 60601-5202, PHONE: (312) 938-0300

M:\940468\CIVIL\94-069RS\94-069RS\Drainage\02\94\432A.dwg 12/15/2004 4:28:27 PM