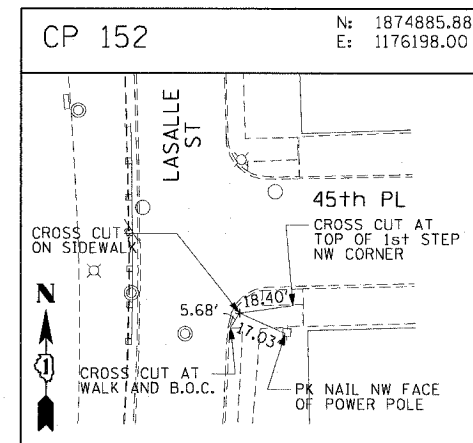
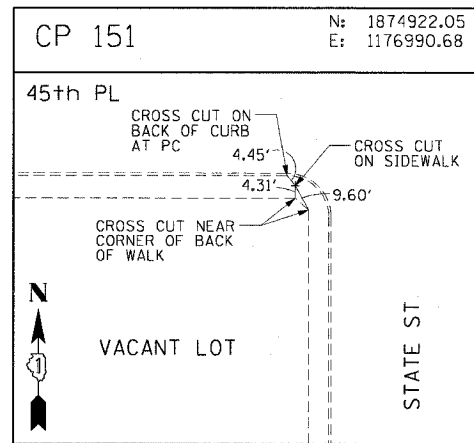
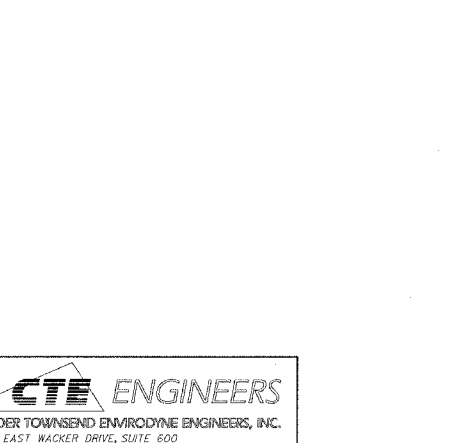
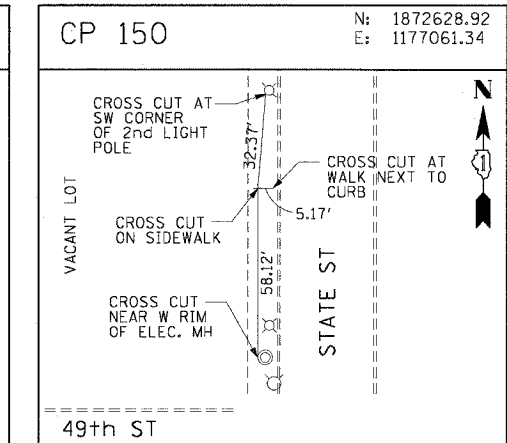
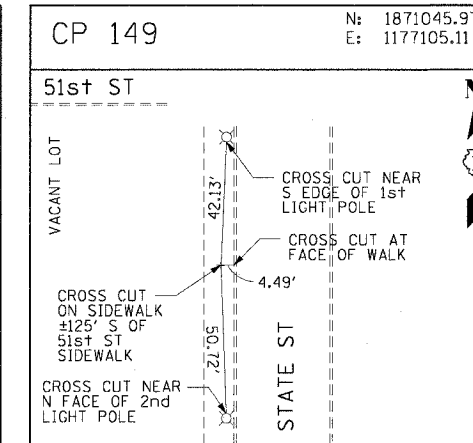
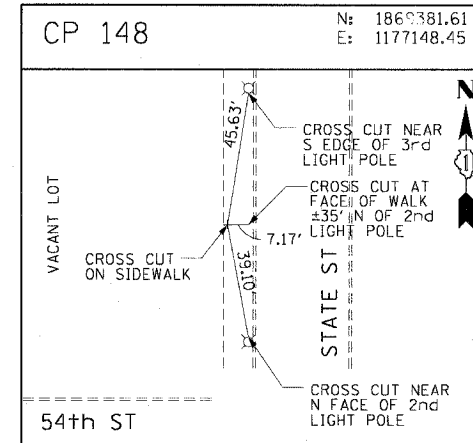
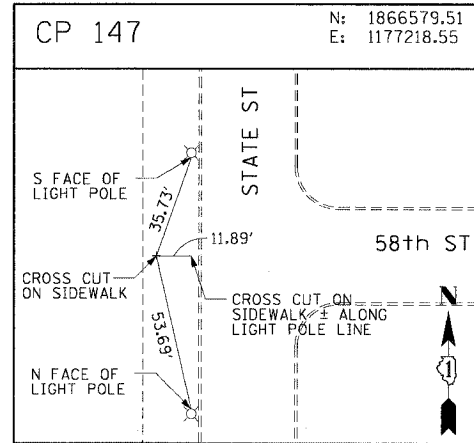
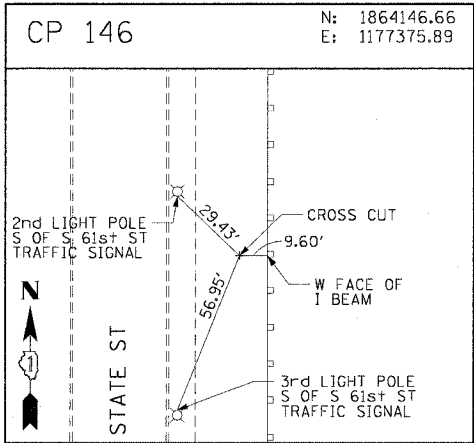
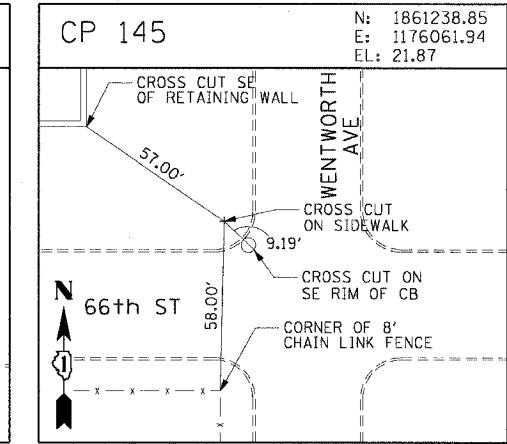
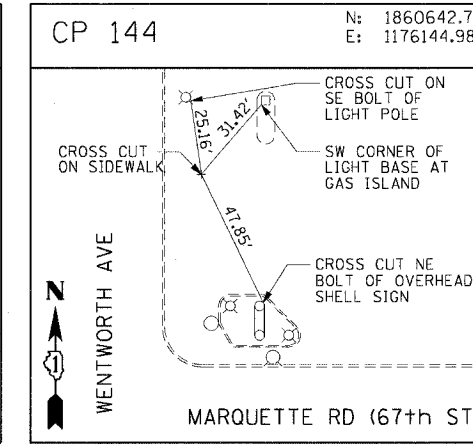
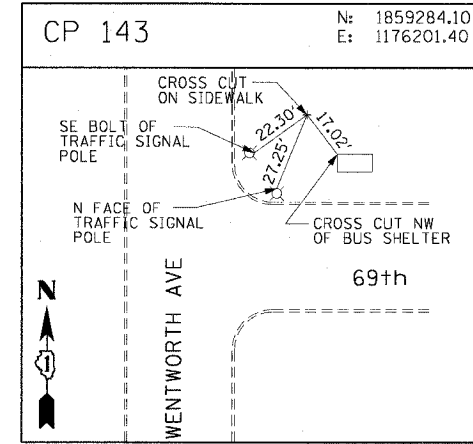
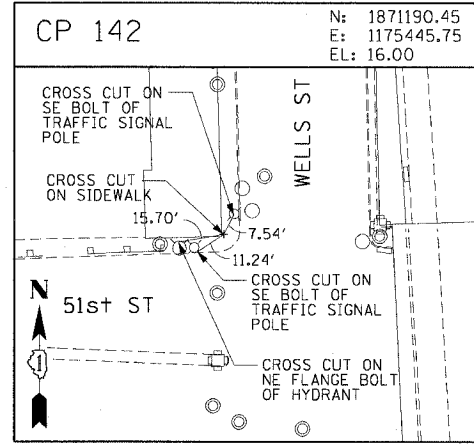
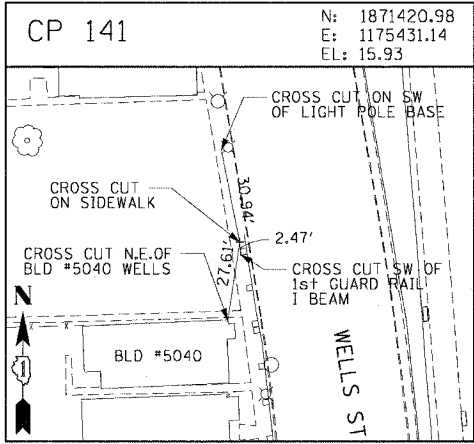
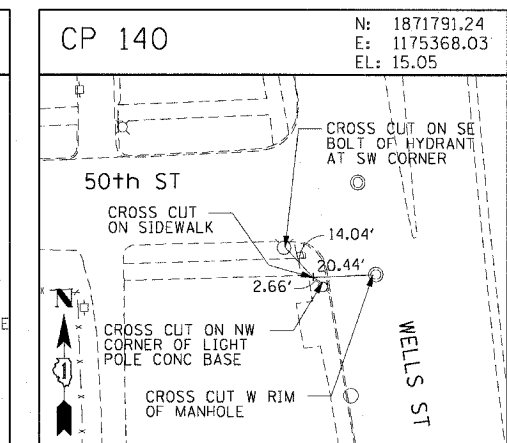
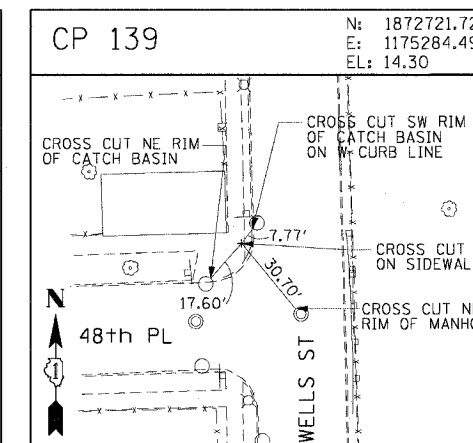
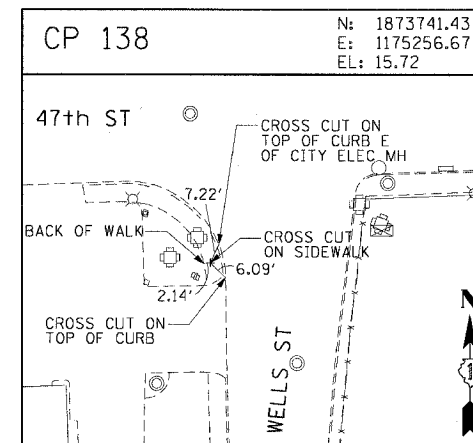
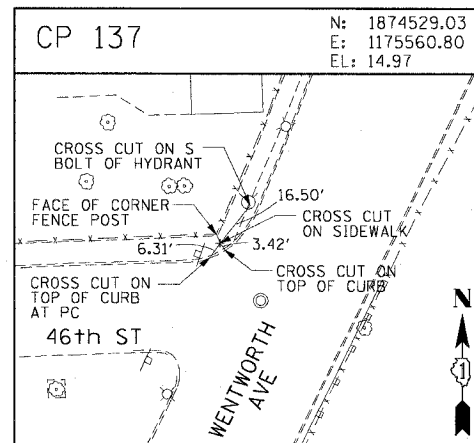
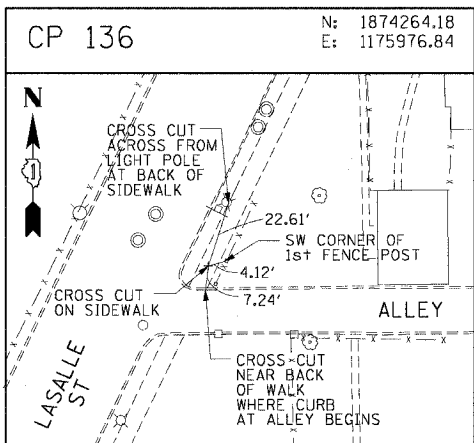


F.A.I. RTE.	SECTION	COUNTY	TOTAL SHEETS	SHEET NO.
90/94	2004-072RS	COOK	54	20
STA.	TO STA.			
FED. ROAD DIST. NO. 1	ILLINOIS	FED. AID PROJECT	62811	

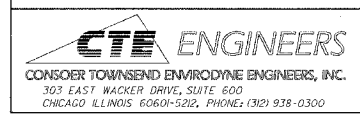


REVISIONS	
NAME	DATE

ILLINOIS DEPARTMENT OF TRANSPORTATION
F.A.I. 90/94 (DAN RYAN EXPRESSWAY)
51st ST TO 48th PL (WENTWORTH AVENUE)
SURVEY TIES AND CONTROL POINTS

SCALE: 1"=30'
DATE: December 17, 2004

DRAWN BY: MRK
CHECKED BY: JAL



12/19/2004 10:35:32 AM