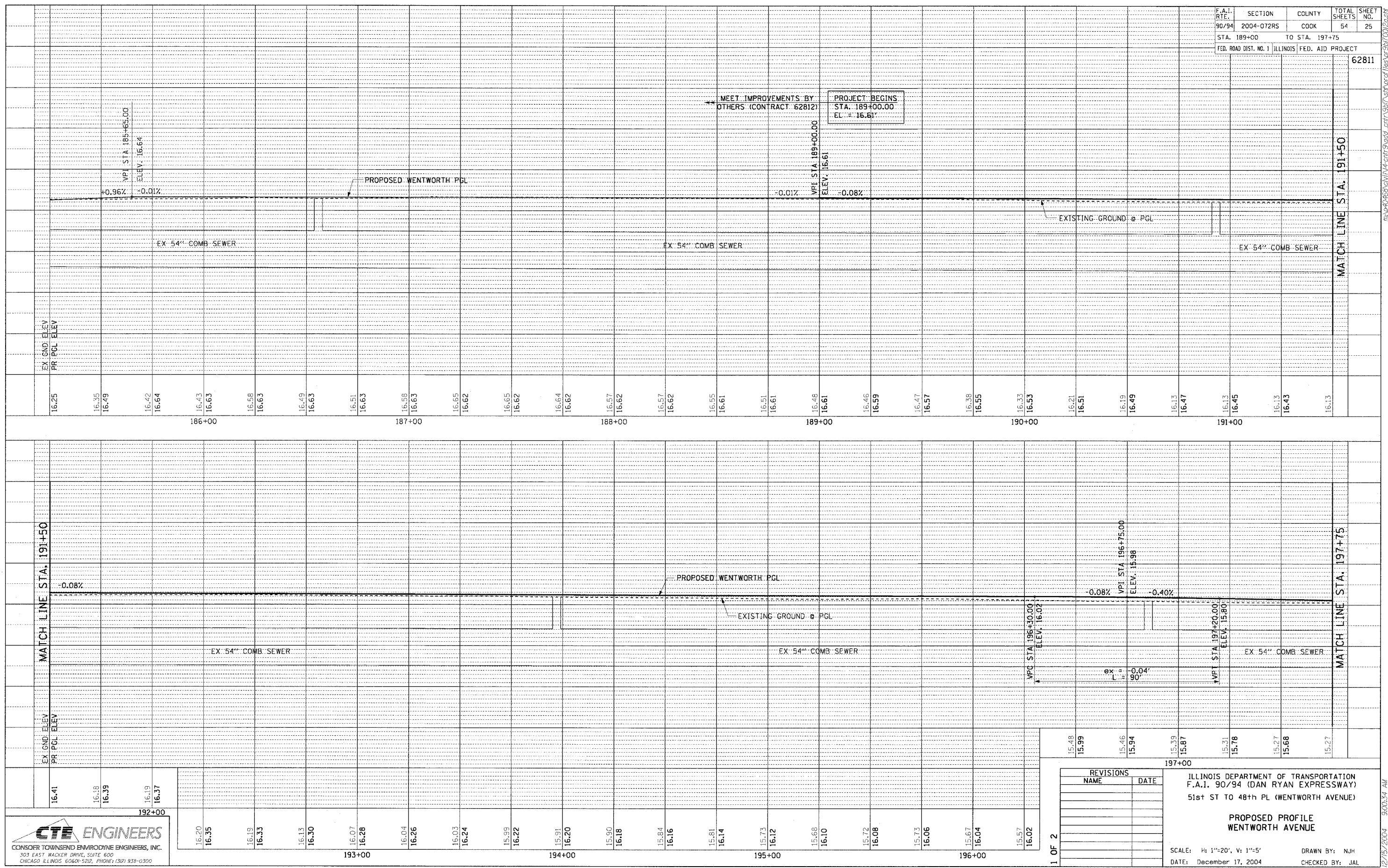


PLAN	SURVEYED	DATE
NO.	NO. & DATE	
NO.	NO. & DATE	

PLAN	BY	DATE
NO.	NO. & DATE	
NO.	NO. & DATE	

F.A.I. DATE	SECTION	COUNTY	TOTAL SHEETS	SHEET NO.
90/94	2004-072RS	COOK	54	25
STA. 189+00	TO STA. 197+75			
FED. ROAD DIST. NO. 1		ILLINOIS	FED. AID PROJECT	
62811				



**CTE ENGINEERS**  
 CONSOR-TOWNSEND ENVIRONMENTAL ENGINEERS, INC.  
 303 EAST WACKER DRIVE, SUITE 600  
 CHICAGO ILLINOIS 60601-5212, PHONE: (312) 938-0300

REVISIONS	
NAME	DATE

ILLINOIS DEPARTMENT OF TRANSPORTATION  
 F.A.I. 90/94 (DAN RYAN EXPRESSWAY)  
 51st ST TO 48th PL (WENTWORTH AVENUE)

**PROPOSED PROFILE  
 WENTWORTH AVENUE**

SCALE: H: 1"=20', V: 1"=5'  
 DATE: December 17, 2004  
 DRAWN BY: NJH  
 CHECKED BY: JAL

12/15/2004 9:00:34 AM