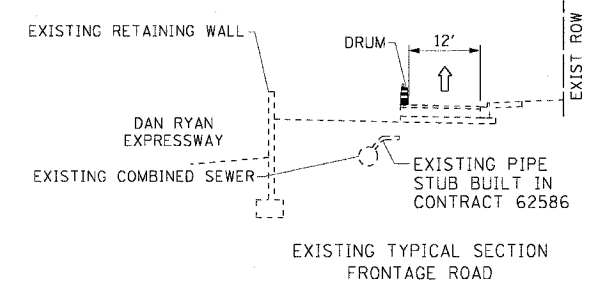


TRAFFIC CONTROL - GENERAL NOTES

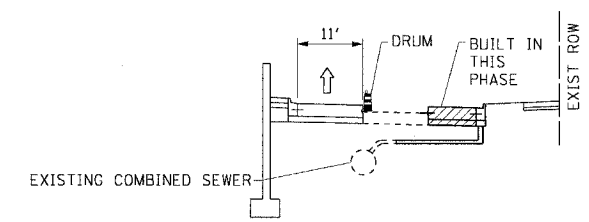
1. TRAFFIC CONTROL SHALL BE PAID FOR AT THE CONTRACT LUMP SUM PRICE FOR TRAFFIC CONTROL AND PROTECTION, STANDARD 701601 AND TRAFFIC CONTROL AND PROTECTION, STANDARD 701801.
2. LANE CLOSURES, RAMP CLOSURES, SIGNING, PAVEMENT MARKING AND BARRICADE PLACEMENT SHALL BE IN ACCORDANCE WITH THE INCLUDED IDOT STANDARD DRAWINGS AND IDOT DISTRICT 1 STANDARD DETAILS. CLOSURES MUST BE COORDINATED WITH THE ENGINEER.
3. ALL DRUMS, VERTICAL PANELS, AND BARRICADES IMMEDIATELY ADJACENT TO THE EDGE OF TRAVELED WAY SHALL BE EQUIPPED WITH STEADY BURN MONO-DIRECTIONAL LIGHTS. CONES WILL NOT BE ALLOWED, UNLESS NOTED, ALL DRUM SPACINGS SHALL BE SPACED A MINIMUM OF 25' CENTER TO CENTER OR AS DIRECTED BY THE ENGINEER.
4. TRAFFIC WILL BE MAINTAINED AT ALL TIMES ON FRONTAGE ROADS AND LOCAL CROSS STREETS. STREET PARKING WILL NOT BE ALLOWED ON FRONTAGE ROADS WITHIN THE WORK ZONE.
5. IN AREAS WHERE AN 11' WIDE TRAFFIC LANE CANNOT BE MAINTAINED WITH DRUMS OR TYPE II BARRICADES, VERTICAL BARRICADES CONFORMING TO IDOT HIGHWAY STANDARD 702001 MAY BE USED.
6. TRAFFIC CONTROL FOR THIS CONTRACT MUST DIRECTLY CORRELATE TO CONSTRUCTION STAGES 2 AND 3 OF CONTRACT 62586. THE CONTRACTOR MUST COORDINATE ALL TRAFFIC CONTROL AND PAVING OPERATIONS WITH CONTRACT 62586, INCLUDING THE FINAL TRAFFIC CONTROL TRANSITION UPON COMPLETION OF THE CONTRACT. SEE THE SUGGESTED CONSTRUCTION SCHEDULE FOR TARGET DATES OF CONTRACT 62586 CONSTRUCTION STAGES. NO ADDITIONAL COMPENSATION WILL BE CONSIDERED FOR CHANGES OR EXTENSIONS IN THE SCHEDULE. A SUGGESTED TYPICAL PAVING SEQUENCE IS PROVIDED HERE.

SUGGESTED TYPICAL PAVING SEQUENCE



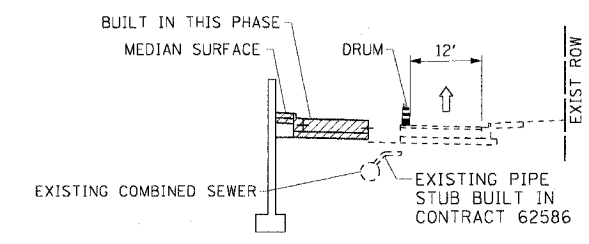
EXISTING TYPICAL SECTION FRONTAGE ROAD

EXISTING



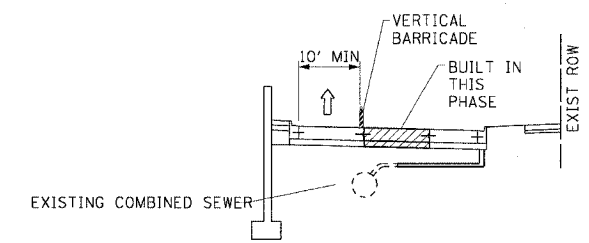
STAGE 3 OF CONTRACT 62586 (PARKING LANE CONSTRUCTION)

PHASE ③



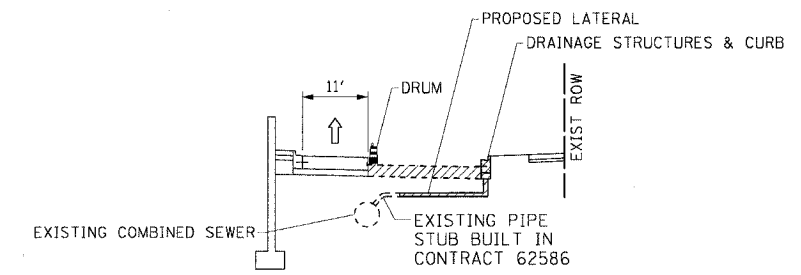
STAGE 2 OF CONTRACT 62586 (LEFT LANE CONSTRUCTION)

PHASE ①



STAGE 3 OF CONTRACT 62586 (CENTER LANE CONSTRUCTION)

PHASE ④



STAGE 3 OF CONTRACT 62586 (SUBGRADE/DRAINAGE/RIGHT CURB CONSTRUCTION)

PHASE ②

PHASE ① = THIS CONTRACT COINCIDES WITH STAGE 2 OF CONTRACT 62586	
TRAFFIC:	ONE LANE OF TRAFFIC SHALL BE MAINTAINED AT ALL TIMES ON THE RIGHT SIDE OF EXISTING ROADWAY AS NECESSARY WITH STANDARD 701601. THE TIMING OF THIS PHASE SHALL CORRESPOND TO CONSTRUCTION STAGE 2 OF CONTRACT 62586.
WORK TO BE COMPLETED THIS PHASE:	- PERFORM ALL EARTHWORK AND PAVING NECESSARY TO PROVIDE AN 11' LANE IN PHASE 2. - CONSTRUCT PGE, LEFT CURB AND MEDIAN SURFACE BETWEEN CURB AND RETAINING WALL.
PHASE ② = THIS CONTRACT COINCIDES WITH STAGE 3 OF CONTRACT 62586	
TRAFFIC:	ONE LANE OF TRAFFIC SHALL BE MAINTAINED AT ALL TIMES ON THE LEFT SIDE OF THE ROADWAY ON NEW PAVEMENT AS NECESSARY WITH STANDARD 701601. THE TIMING OF THIS PHASE SHALL CORRESPOND TO CONSTRUCTION STAGE 3 OF CONTRACT 62586.
WORK TO BE COMPLETED THIS PHASE:	- COMPLETE LATERAL AND INSTALL DRAINAGE STRUCTURES. - PERFORM ALL EARTHWORK NECESSARY TO CONSTRUCT PAVEMENT IN PHASES 3 AND 4. - CONSTRUCT DRAINAGE STRUCTURES AND CURB AND CONNECT PROPOSED LATERALS TO EXISTING COMBINED SEWER.
PHASE ③ = THIS CONTRACT COINCIDES WITH STAGE 3 OF CONTRACT 62586	
TRAFFIC:	ONE LANE OF TRAFFIC SHALL BE MAINTAINED AT ALL TIMES ON THE LEFT SIDE OF THE ROADWAY ON NEW PAVEMENT AS NECESSARY WITH STANDARD 701601. THE TIMING OF THIS PHASE SHALL CORRESPOND TO CONSTRUCTION STAGE 3 OF CONTRACT 62586.
WORK TO BE COMPLETED THIS PHASE:	- CONSTRUCT RIGHT SIDE OF REMAINING PROPOSED PAVEMENT (PARKING LANE).
PHASE ④ = THIS CONTRACT COINCIDES WITH STAGE 3 OF CONTRACT 62586	
TRAFFIC:	ONE LANE OF TRAFFIC SHALL BE MAINTAINED AT ALL TIMES ON THE LEFT SIDE OF THE ROADWAY ON NEW PAVEMENT AS NECESSARY WITH STANDARD 701601. THE TIMING OF THIS PHASE SHALL CORRESPOND TO CONSTRUCTION STAGE 3 OF CONTRACT 62586.
WORK TO BE COMPLETED THIS PHASE:	- CONSTRUCT CENTER OF REMAINING PROPOSED PAVEMENT. - COMPLETE ALL REMAINING CONTRACT ITEMS.

REVISIONS	
NAME	DATE

ILLINOIS DEPARTMENT OF TRANSPORTATION
F.A.I. 90/94 (DAN RYAN EXPRESSWAY)
51st ST TO 48th PL (WENTWORTH AVENUE)

TRAFFIC CONTROL GENERAL NOTES

SCALE: NONE
DATE: December 17, 2004
DRAWN BY: SWANG
CHECKED BY: SWANG

M:\P\40465\CIVIL\4-Chrs\5-Add_Chr\62586-Traffic\General\62586-Traffic\62811.dwg 9:27:52 AM 12/15/2004