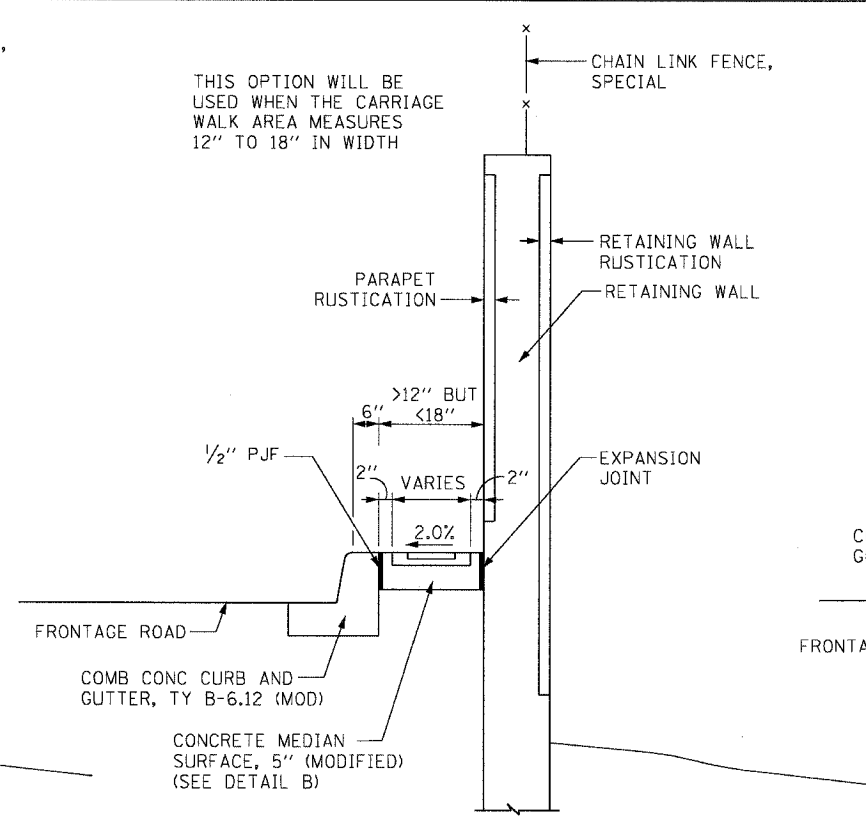
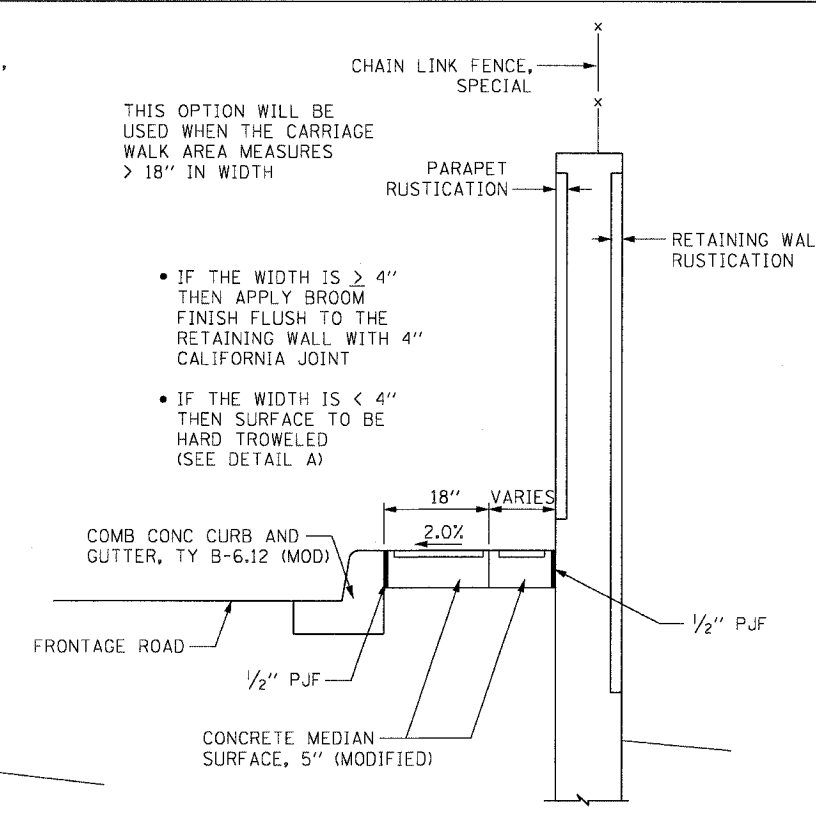


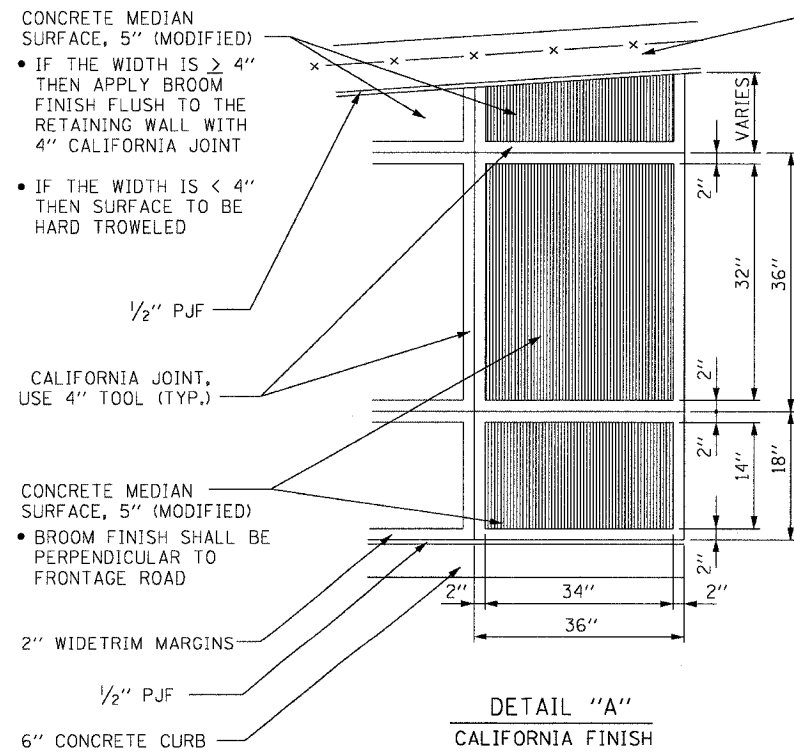
CARRIAGE WALK
AREA < 12" WIDE



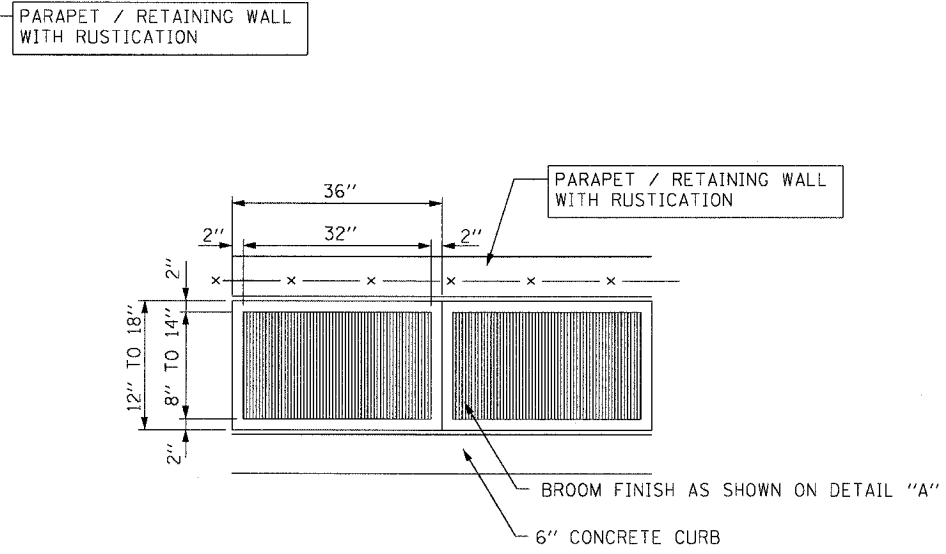
CARRIAGE WALK
AREA 12" TO 18" WIDE



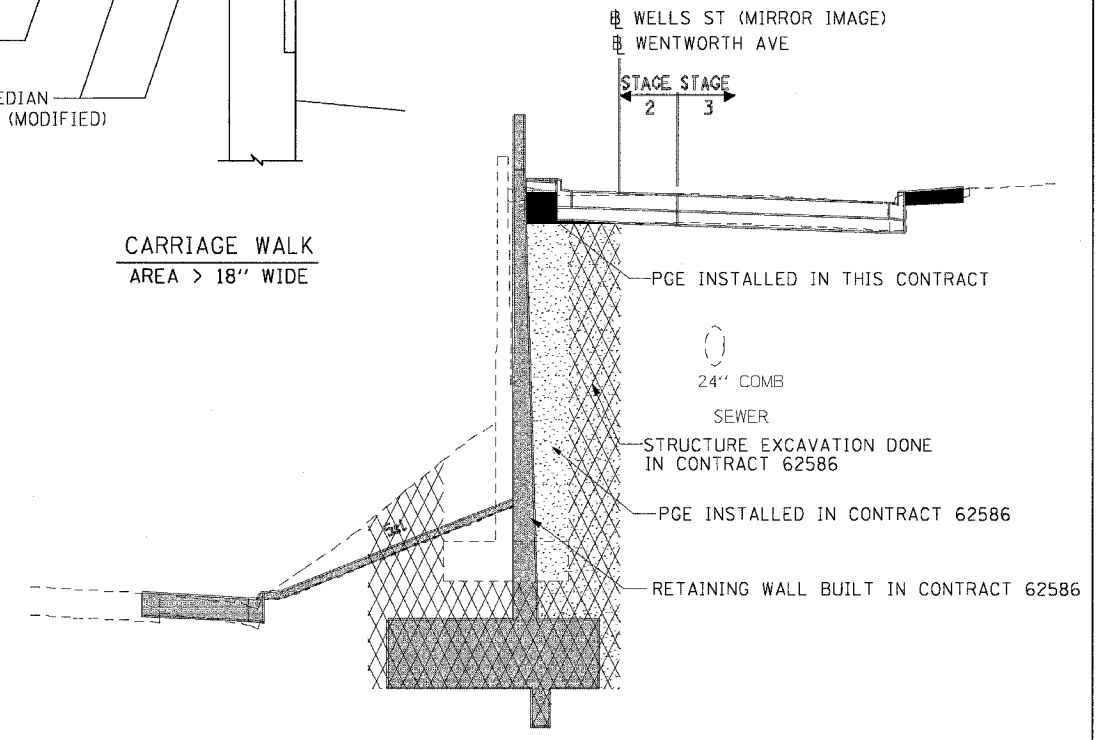
CARRIAGE WALK
AREA > 18" WIDE



DETAIL "A"
CALIFORNIA FINISH



DETAIL "B"
CALIFORNIA FINISH



PGE PLACEMENT DETAIL

NOTE:
THE PGE IS TO BE USED AS FILL IN AREAS THAT HAVE BEEN EXCAVATED FOR REMOVAL AND INSTALLATION OF RETAINING WALLS IN IDOT CONTRACT 62586.

m:\p\40468\WIN4-ent\9094\road_details\9094_road_details_9094_46.dwg 3/16/04 PM