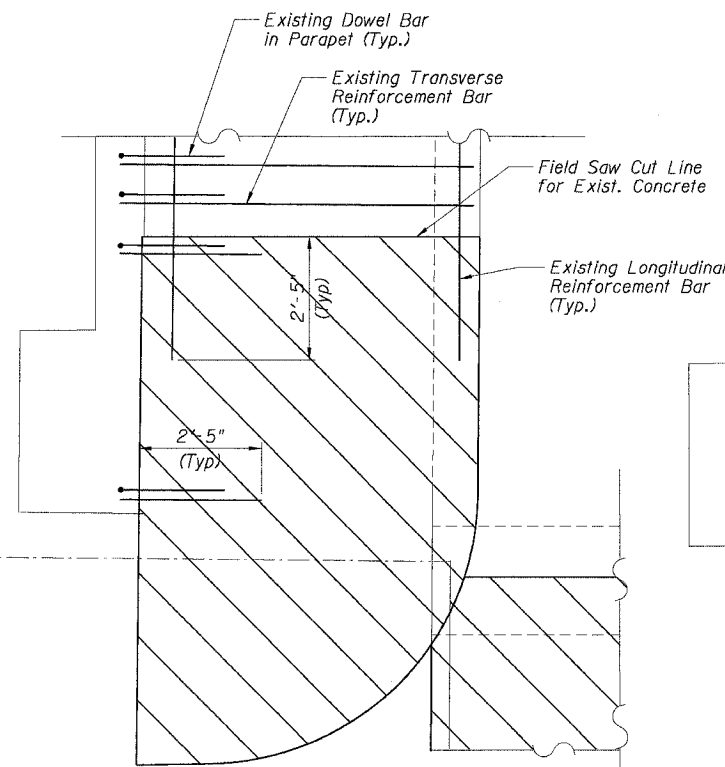
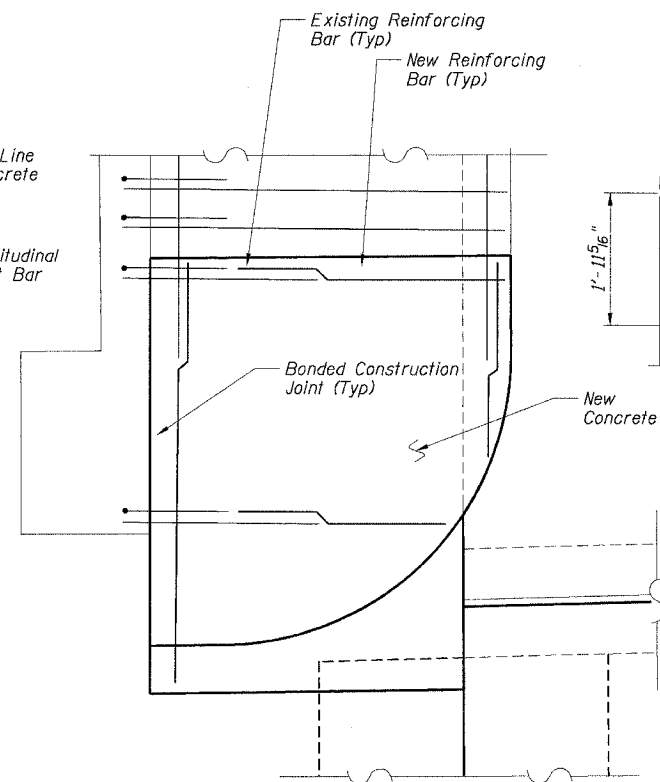


F.A.I. RTE.	SECTION	COUNTY	TOTAL SHEETS	SHEET NO.
90/94	2004-073RS	COOK	74	50
STA.	TO STA.			
FED. ROAD DIST. NO. 1 ILLINOIS FED. AID PROJECT				

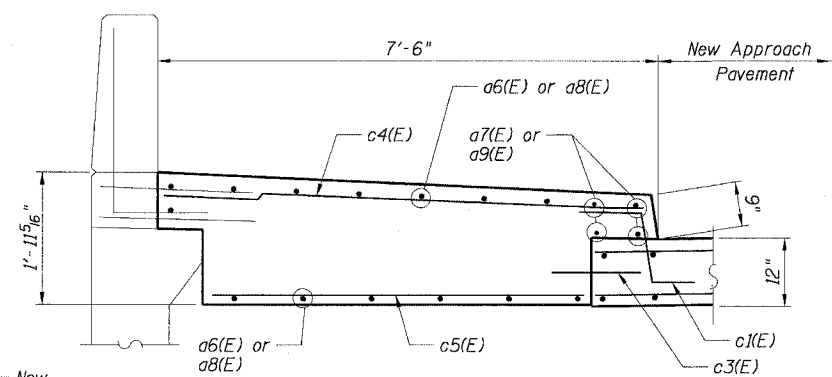
62812



TYPICAL SIDEWALK REMOVAL-PLAN
(East Appr. South Sidewalk Shown for Clarity)

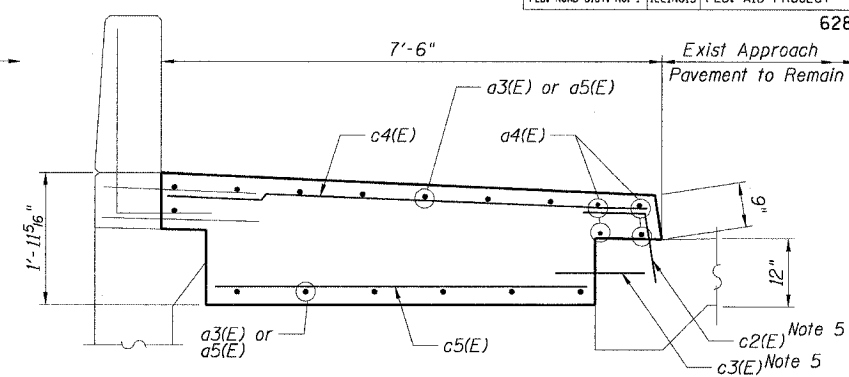


TYPICAL SIDEWALK REPLACEMENT-PLAN
(East Appr. South Sidewalk Shown for Clarity)

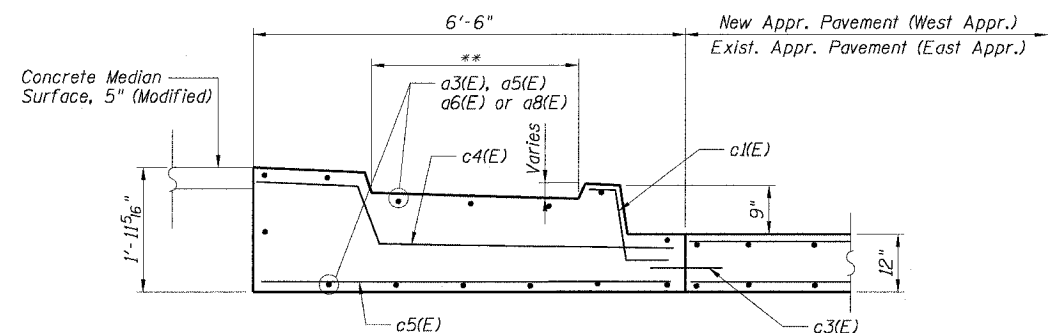


WEST APPROACH - SIDEWALK

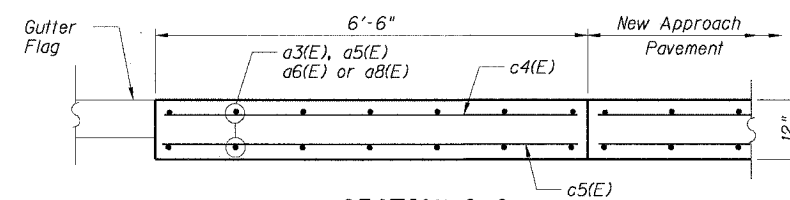
SECTION A-A



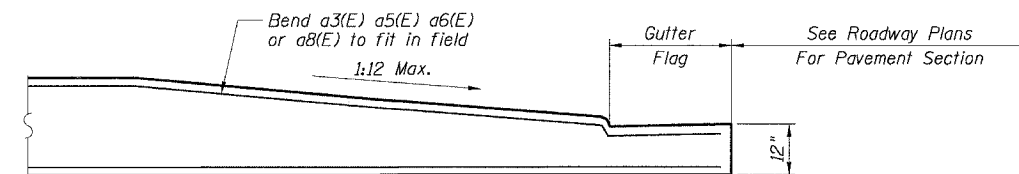
EAST APPROACH - SIDEWALK



SECTION B-B



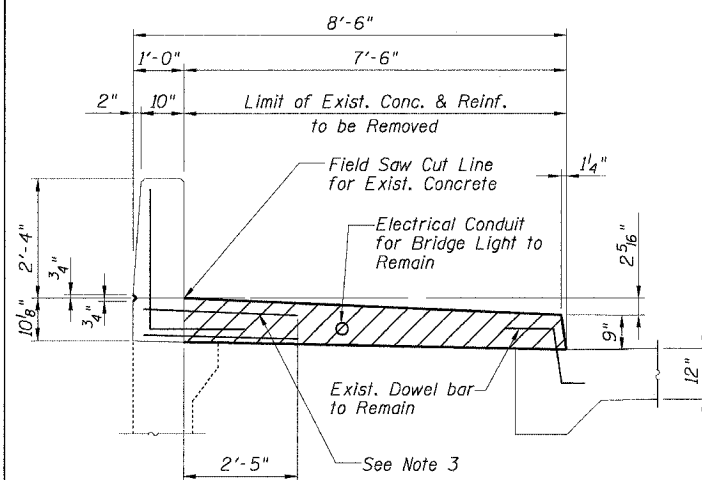
SECTION C-C



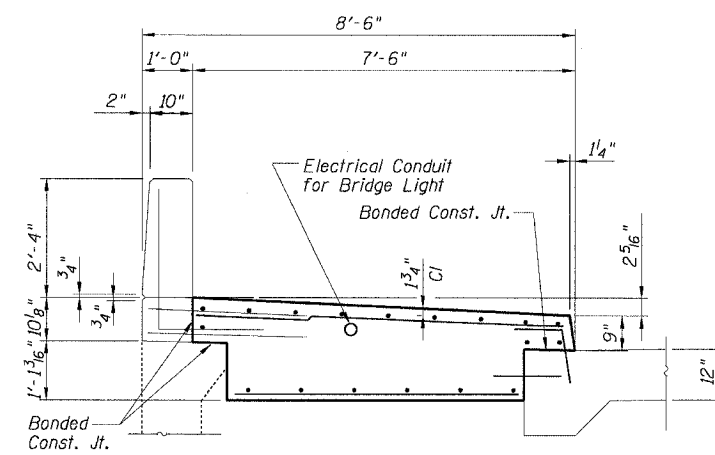
SECTION D-D

LEGEND:

Removal of Existing Structures



TYPICAL SIDEWALK REMOVAL-SECTION
(East Appr. South Sidewalk Shown for Clarity)



TYPICAL SIDEWALK REPLACEMENT-SECTION
(East Appr. South Sidewalk Shown for Clarity)

NOTES:

** See IDOT Std. 424001

1. Reinforcement designated (E) shall be epoxy coated.
2. Existing reinforcing steel which is exposed by the concrete removal process, but which is to remain partially embedded in the existing structure shall be cleaned to be free of existing concrete & rust. Strengthened if necessary and recast into the new concrete. Existing reinforcing steel which is cut, stretched or damaged by the concrete removal process shall be replaced by embedded reinforcing steel or anchorage, equal to or greater than the original reinforcing steel at no additional cost.
3. Cut existing longitudinal & transverse reinforcement bars to a length of 2'-5\"/>
- 4. Match existing sidewalk elevations along the saw cut lines.
- 5. Drill and grout c2(E) and c3(E) bars where existing approach slab is to remain.



REVISIONS	
NAME	DATE

ILLINOIS DEPARTMENT OF TRANSPORTATION
F.A.I. 90/94 (DAN RYAN EXPRESSWAY)
51st ST (WENTWORTH AVE AND WELLS ST)
APPROACH PAVEMENT SECTIONS
51ST STREET BRIDGE
STRUCTURE NUMBER 016-1157

SCALE: NONE DRAWN BY: GC
DATE: December 23, 2004 CHECKED BY: SS

12/21/2004 3:44:00 PM