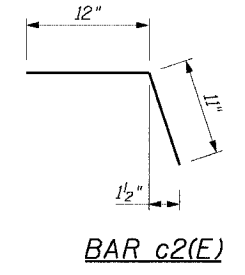
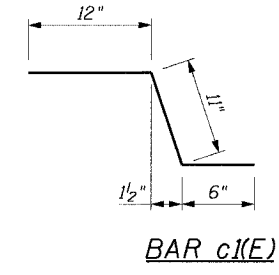
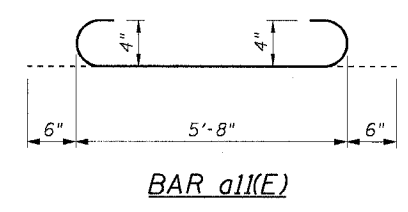
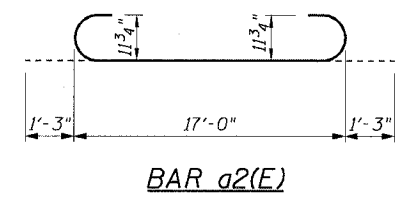
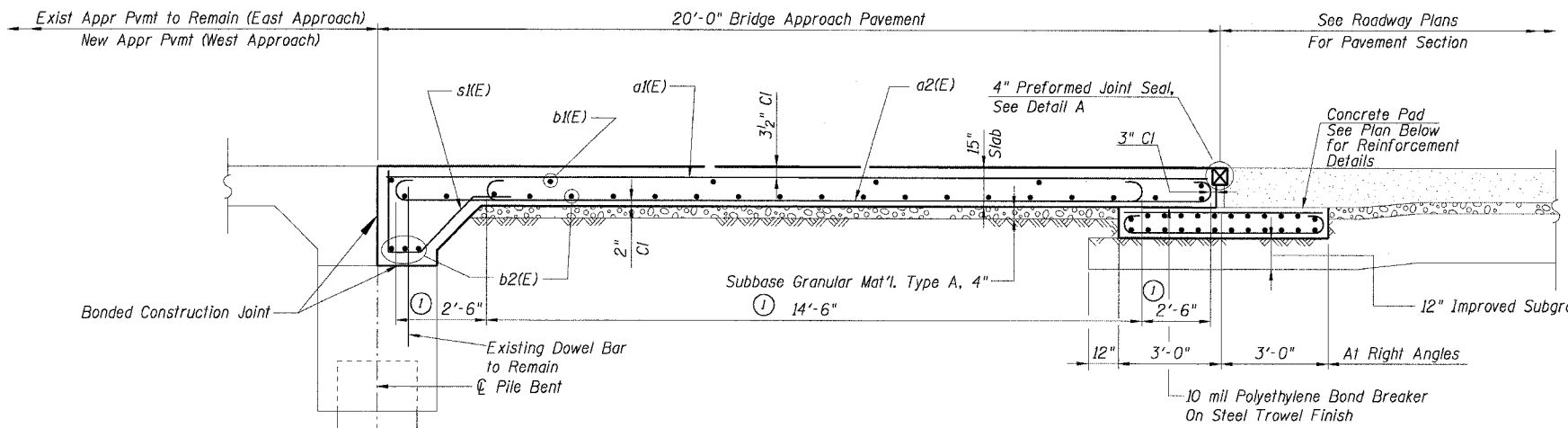


F.A.I. RTE.	SECTION	COUNTY	TOTAL SHEETS	SHEET NO.
90/94	2004-073RS	COOK	74	52
STA.	TO STA.			
FED. ROAD DIST. NO. 1	ILLINOIS	FED. AID PROJECT		

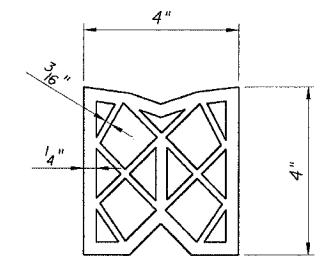
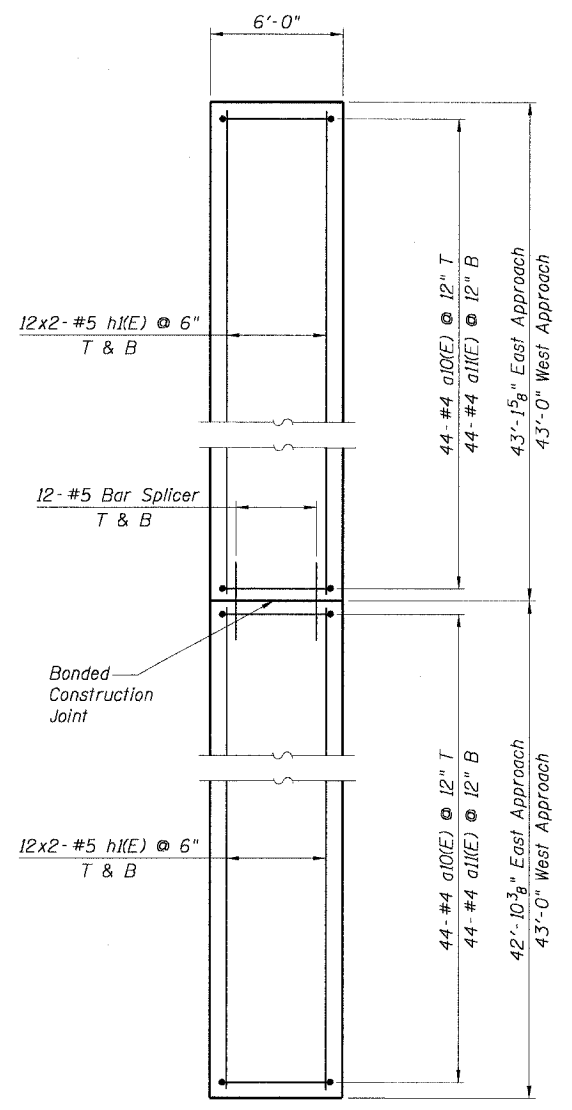
62B12

BILL OF MATERIAL

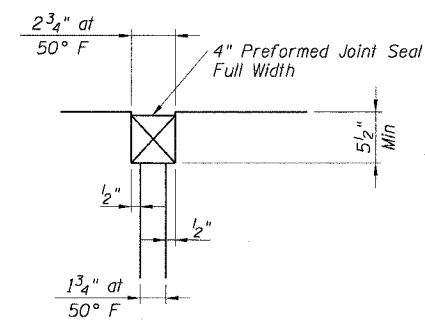
Bar	No.	Size	Length	Shape
a1(E)	246	#5	19'-8"	—
a2(E)	480	#9	19'-6"	—
a3(E)	14	#5	10'-11"	—
a4(E)	4	#5	4'-10"	—
a5(E)	14	#5	8'-8"	—
a6(E)	14	#5	6'-11"	—
a7(E)	2	#5	3'-7"	—
a8(E)	14	#5	20'-10"	—
a9(E)	2	#5	14'-8"	—
a10(E)	176	#4	5'-8"	—
a11(E)	176	#4	6'-8"	—
b1(E)	36	#4	39'-6"	—
b2(E)	144	#5	39'-6"	—
b3(E)	32	#5	5'-0"	—
c1(E)	53	#5	2'-5"	—
c2(E)	10	#5	1'-11"	—
c3(E)	46	#5	2'-0"	—
c4(E)	52	#5	7'-2"	—
c5(E)	52	#5	6'-2"	—
h1(E)	192	#5	22'-4"	—
s1(E)	246	#5	4'-5"	—
ITEM	UNIT	Quantity		
Bridge Approach Pavement, Special	Sq Yd	566		
Protective Coat	Sq Yd	566		
Concrete Superstructure	Cu Yd	20		
Reinforcement Bars, Epoxy Coated	Pound	50,390		
Bar Splicers	Each	138		



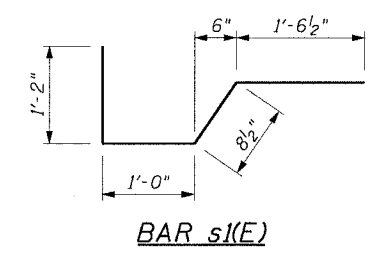
SECTION E-E
① Stagger a2(E) Bars as Shown on Plans - Full Width



PREFORMED JOINT SEAL



DETAIL A



BAR s1(E)

NOTES:

1. Approach pavement within the pay limits identified in the plan will be paid for as "Bridge Approach Pavement, Special" in accordance with the Standard Specifications.
2. Reinforcement designated (E) shall be epoxy coated.
3. See STD-1 for bar splicer details.

REVISIONS	
NAME	DATE

ILLINOIS DEPARTMENT OF TRANSPORTATION
F.A.I. 90/94 (DAN RYAN EXPRESSWAY)
51st ST (WENTWORTH AVE AND WELLS ST)
APPROACH PAVEMENT SECTIONS
51ST STREET BRIDGE
STRUCTURE NUMBER 016-1157

SCALE: NONE
DATE: December 23, 2004
DRAWN BY: GC
CHECKED BY: SS