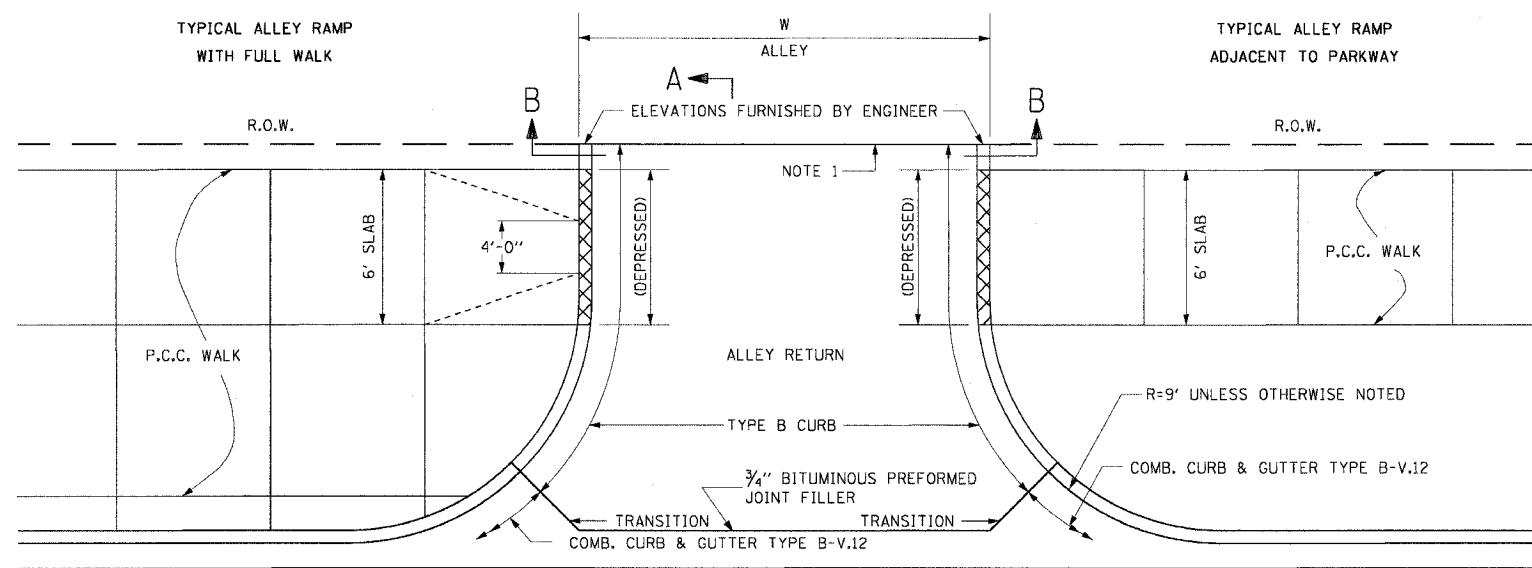


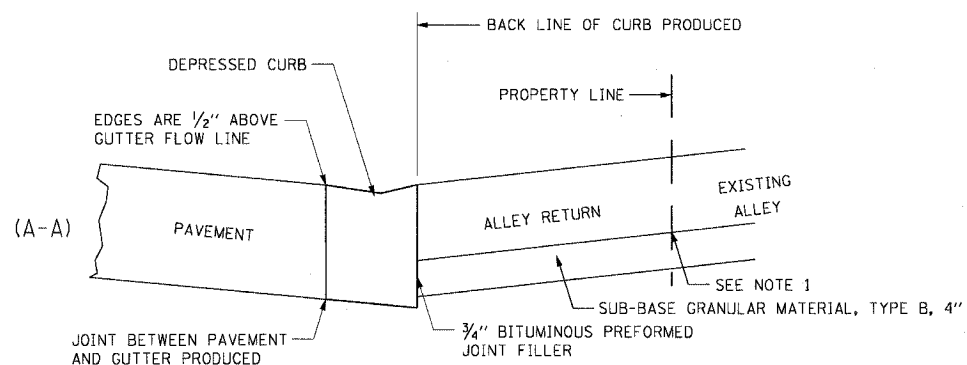
F.A.I. RTE.	SECTION	COUNTY	TOTAL SHEETS	SHEET NO.
90/94	2004-074RS	COOK	63	40
STA.	TO STA.			
FED. ROAD DIST. NO. 1	ILLINOIS	FED. AID PROJECT		

62813

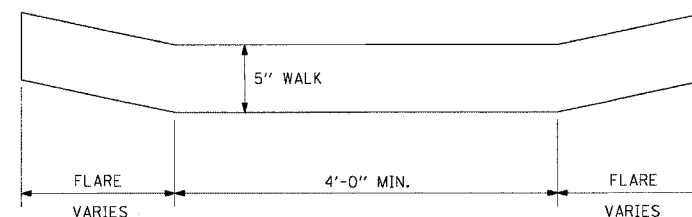
DETAIL OF ALLEY RETURN



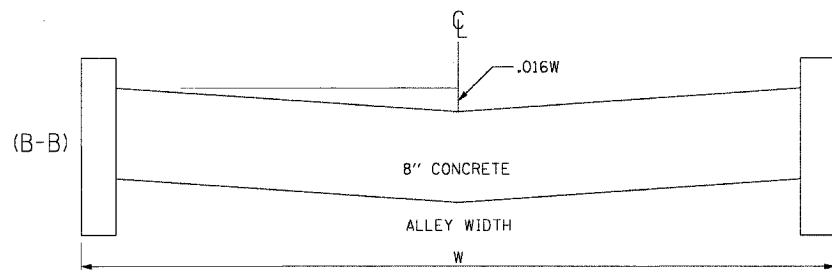
TYPICAL ALLEY RETURN



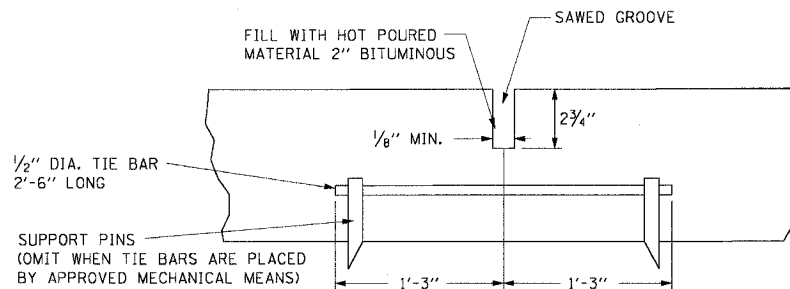
LONGITUDINAL SECTION A-A



FRONT VIEW RAMPED WALK



SECTION B-B AT PROPERTY LINE



DETAIL OF SAWED LONGITUDINAL JOINT

TO BE CONSTRUCTED ON CENTERLINE WHEN 'W' EXCEEDS 18'.

NOTE:

1. WHEN A PORTION OF AN EXISTING PAVED ALLEY IS REMOVED TO ADJUST THE ALLEY PAVEMENT TO THE NEW GRADE, 3/4" BITUMINOUS PREFORMED JOINT FILLER SHALL BE PLACED ON THE PROPERTY LINE OTHERWISE THE JOINT IS OMITTED. THE COST OF FURNISHING AND PLACING THE 3/4" BITUMINOUS PREFORMED JOINT FILLER SHALL BE INCLUDED IN THE COST OF THE PORTLAND CEMENT CONCRETE ALLEY RETURN.
2. BASIS OF PAYMENT - THE COMBINATION CONCRETE CURB AND GUTTER TYPE B.V-12, TYPE 3, OR OTHER TYPE SPECIFIED, SHALL BE MEASURED STRAIGHT ACROSS THE ALLEY RETURN. THE TYPE B CONCRETE CURB SHALL BE MEASURED FROM THE TRANSITION JOINT TO THE PROPERTY LINE.
3. SAWED JOINTS SHALL BE SEALED WITH A POURED MATERIAL MEETING THE REQUIREMENTS OF SECTION 1050 OF THE SSRBC.

REVISIONS	
NAME	DATE

ILLINOIS DEPARTMENT OF TRANSPORTATION
 F.A.I. 90/94 (DAN RYAN EXPRESSWAY)
 59th ST TO 57th ST (WELLS STREET)

CITY STANDARD DETAILS
 ALLEY PAVEMENT DETAILS

SCALE: NONE
 DATE: December 17, 2004
 DRAWN BY: PEB
 CHECKED BY: JAL

m:\p\40468\Civil\4-Civil\9\Addl_Ctr\981919191\Roadway_Details\C9819191_405.DWG 12/14/2004 5:04:35 PM