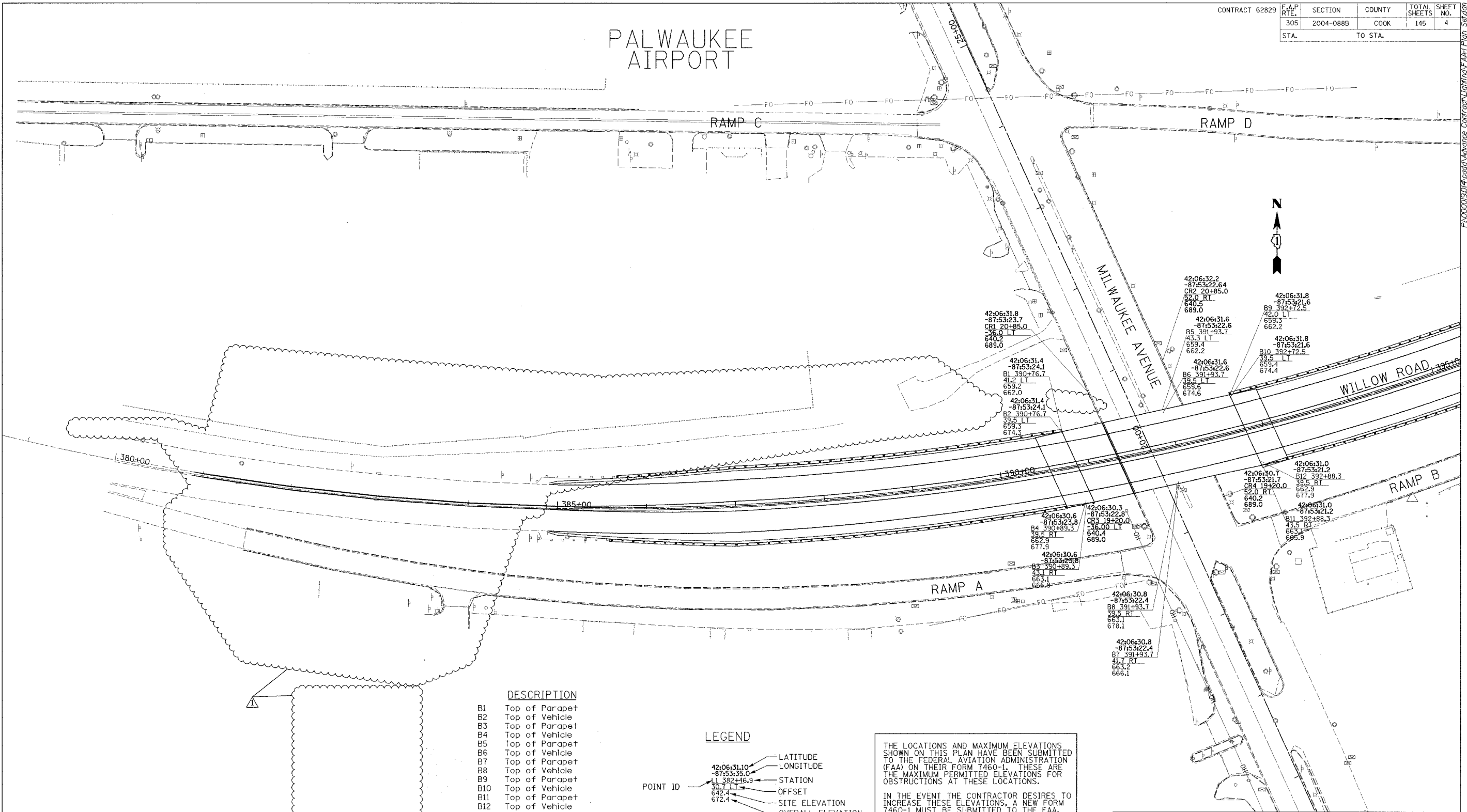


CONTRACT 62829	F.A.P. RTE.	SECTION	COUNTY	TOTAL SHEETS	SHEET NO.
	305	2004-088B	COOK	145	4
STA.	TO STA.				

PALWAUKEE AIRPORT



DESCRIPTION

B1	Top of Parapet
B2	Top of Vehicle
B3	Top of Parapet
B4	Top of Vehicle
B5	Top of Parapet
B6	Top of Vehicle
B7	Top of Parapet
B8	Top of Vehicle
B9	Top of Parapet
B10	Top of Vehicle
B11	Top of Parapet
B12	Top of Vehicle
CR1	Tip of construction crane
CR2	Tip of construction crane
CR3	Tip of construction crane
CR4	Tip of construction crane

LEGEND

POINT ID	42+06:31.10	LATITUDE
	-87:53:35.0	LONGITUDE
	35.7	STATION
	382+16.9	OFFSET
	642.4	SITE ELEVATION
	672.4	OVERALL ELEVATION

THE LOCATIONS AND MAXIMUM ELEVATIONS SHOWN ON THIS PLAN HAVE BEEN SUBMITTED TO THE FEDERAL AVIATION ADMINISTRATION (FAA) ON THEIR FORM 7460-1. THESE ARE THE MAXIMUM PERMITTED ELEVATIONS FOR OBSTRUCTIONS AT THESE LOCATIONS.

IN THE EVENT THE CONTRACTOR DESIRES TO INCREASE THESE ELEVATIONS, A NEW FORM 7460-1 MUST BE SUBMITTED TO THE FAA.

Edwards and Kelcey

REVISIONS	
NAME	DATE
ADDENDUM 1	2/22/05

ILLINOIS DEPARTMENT OF TRANSPORTATION

FAA COORDINATION

WILLOW ROAD
OVER US 45/IL 21 (MILWAUKEE AVE)
AND OVER DES PLAINES RIVER

SCALE: DRAWN BY MJO
DATE: JANUARY 2005 CHECKED BY PJM

F:\000019014\card\advance\contract\lighting\FAA-Plan Set.dgn 02/22/2005 02:52:28 PM