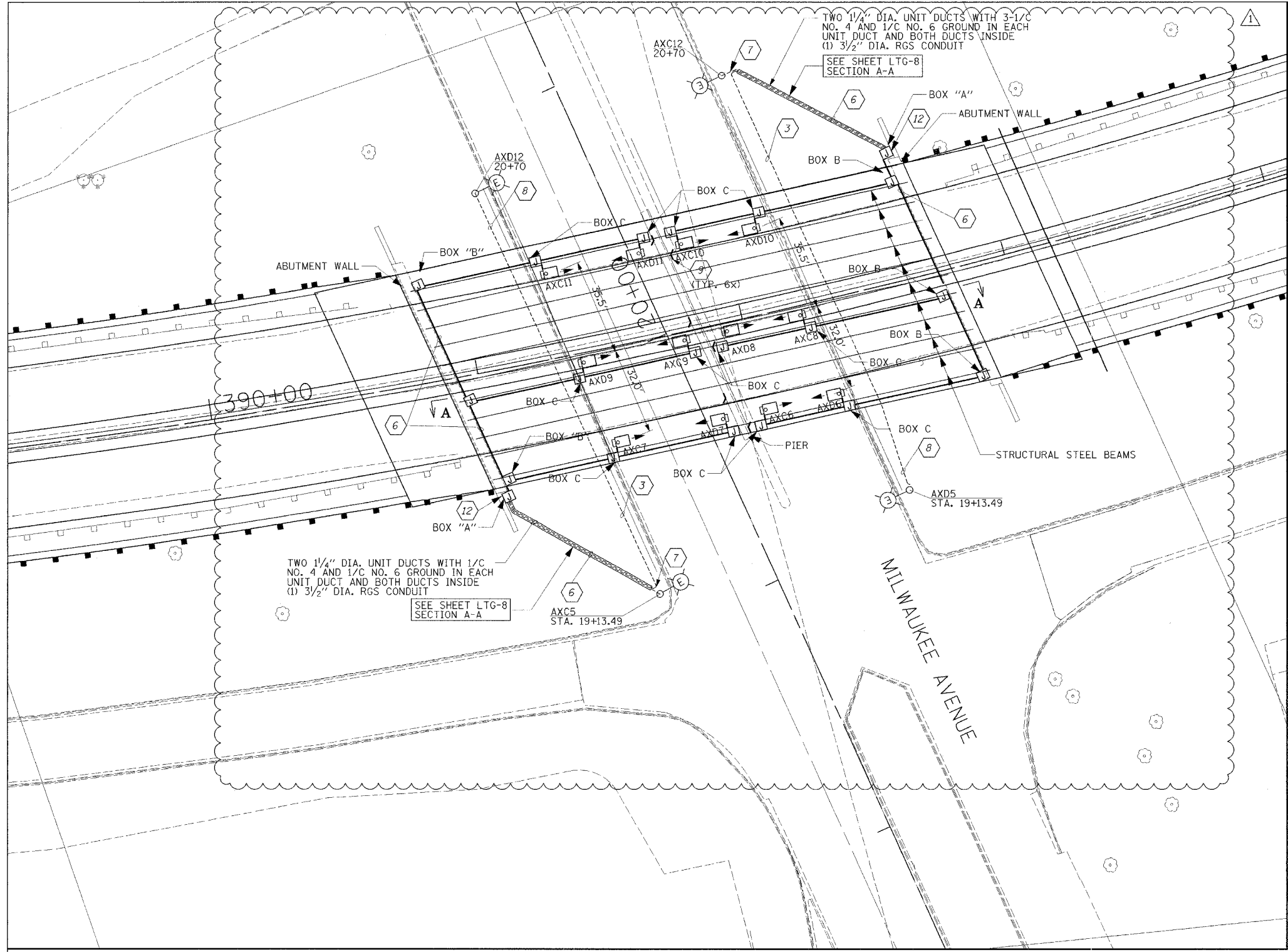


CONTRACT 62829	F.A.P. RTE.	SECTION	COUNTY	TOTAL SHEETS	SHEET NO.
	305	2004-0888	COOK	145	50
	STA.	TO STA.			



- NOTES:
- SEE DWG. NO. LTG-1 FOR ELECTRICAL DRAWING INDEX AND GENERAL NOTES.
 - SEE DWG. LTG-2 FOR ELECTRICAL LEGEND AND ABBREVIATIONS.
 - ALL CABLE RUN FOR THE ROADWAY LIGHTING SHALL BE UNIT DUCT 3-1/C #4, 1/C #6 GND IN 1/4" DIA. POLYETHYLENE UNIT DUCT IN TRENCH.
 - SEE DWG. NO. LTG-8 FOR UNDERPASS LIGHT MOUNTING DETAIL.
 - SEE DWG. NO. LTG-5 FOR WIRING DIAGRAM.
 - ALL WIRE FOR UNDERPASS LUMINAIRES SHALL BE 3-1/C #10, 1/C #10 GND. IN 1" PVC COATED RIGID GALVANIZED STEEL CONDUIT, UNLESS OTHERWISE NOTED.
 - INTERCEPT EXISTING CONDUIT AT GRADE LEVEL. INSTALL NEW 3/2" RGS CONDUIT FROM GRADE TO SS JUNCTION BOX ATTACHED TO EDGE OF ABUTMENT. INSTALL UNIT DUCT CABLE AS NOTED ON PLAN.
 - RE-CONNECT TO EXISTING ROADWAY LIGHTING, 3-1/C #4 AND 1/C #6, IN 1/4" UNIT DUCT.
 - LUMINAIRE NUMBERING DECAL BRACKET.
 - SEE SHEET LTG-8 FOR MILWAUKEE AVENUE UNDERPASS LIGHT MOUNTING DETAIL ENLARGMENT.
 - SEE SHEET LTG-8 FOR ENLARGEMENT OF SECTION VIEW A-A.
 - INSTALL IN-LINE FUSE WITHIN TYPE A JUNCTION BOX AND SIZE TIME DELAY FUSE FOR 30 AMPS.

LTG-6

Edwards and Kelcey	
REVISIONS	
NAME	DATE
ADDENDUM 1	2/22/05

ILLINOIS DEPARTMENT OF TRANSPORTATION

MILWAUKEE AVE. & WILLOW RD. UNDERPASS

WILLOW ROAD OVER US 45/IL 21 (MILWAUKEE AVE) AND OVER DES PLAINES RIVER

SCALE 1"=20'

DATE JANUARY 2005

DRAWN BY CADD SC

CHECKED BY CDS

02/22/2005 03:35:06 PM