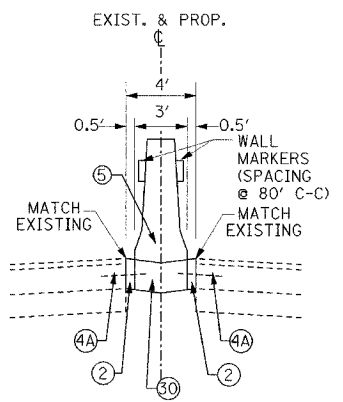
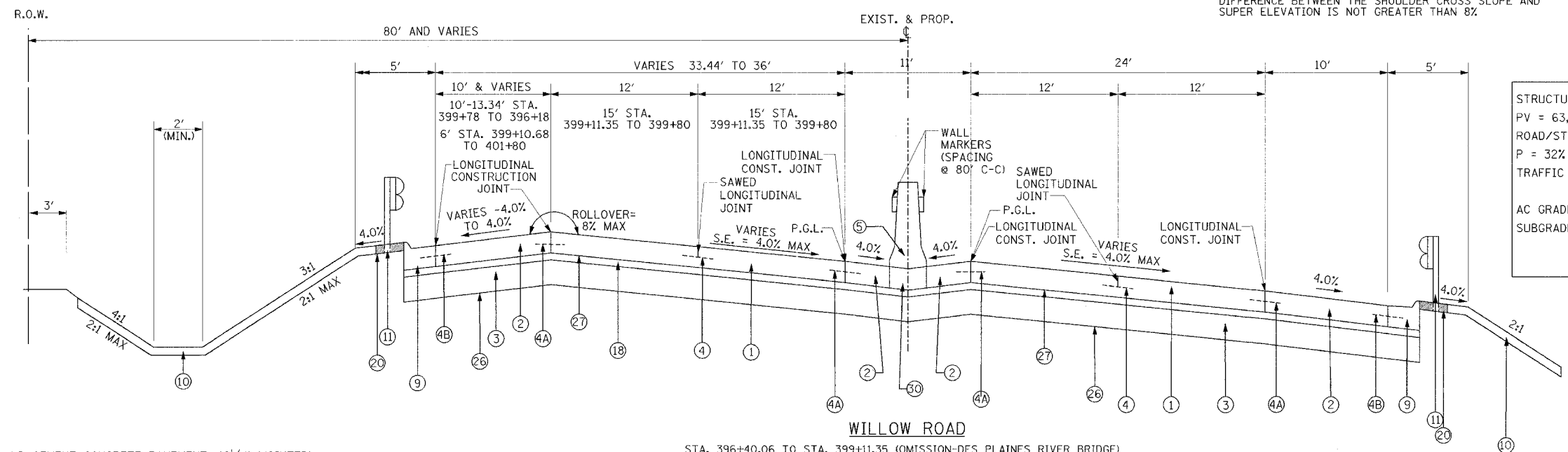


**WILLOW ROAD**  
 STA. 389+50 TO STA. 390+88.71  
 STA. 390+88.71 TO STA. 392+81.31 (OMISSION-MILWAUKEE AVENUE BRIDGE)  
 STA. 392+81.31 TO 396+40.06

\*WESTBOUND INSIDE SHOULDER SLOPE VARIES SUCH THAT THE DIFFERENCE BETWEEN THE SHOULDER CROSS SLOPE AND SUPER ELEVATION IS NOT GREATER THAN 8%.



**WILLOW ROAD**  
 STA. 380+90 TO STA. 384+90  
 STA. 402+80 TO STA. 406+80



**WILLOW ROAD**  
 STA. 396+40.06 TO STA. 399+11.35 (OMISSION-DES PLAINES RIVER BRIDGE)  
 STA. 399+11.35 TO STA. 399+80

**30-YEAR PAVEMENT DESIGN**

STRUCTURAL TRAFFIC:	YEAR 2020
PV = 63,240	SU = 2,856
ROAD/STREET CLASSIFICATION:	MU = 1,904
P = 32%	CLASS 1
TRAFFIC FACTOR: ACTUAL TF = 23.54	M = 45%
MINIMUM TF = 9.04	AC TYPE = N/A
AC GRADE: BINDER = PG 64-22	SURFACE = PG 64-22
SUBGRADE SUPPORT RATING:	
SSR = 2.00 (STA. TO )	
SSR = 2.00 (STA. TO )	

**LEGEND**

- ① PORTLAND CEMENT CONCRETE PAVEMENT, 10 1/4" (JOINTED)
- ② PORTLAND CEMENT CONCRETE SHOULDERS 10 1/4"
- ③ SUB-BASE GRANULAR MATERIAL, TYPE B-12"
- ④ NO. 6x30" EPOXY COATED TIE BARS AT 30" C-C COST IS INCLUDED IN THE COST OF PAVEMENT OR CURB AND GUTTER
- ④A NO. 8x30" EPOXY COATED TIE BARS AT 24" C-C COST IS INCLUDED IN THE COST OF PAVEMENT OR CURB AND GUTTER
- ④B NO. 6x30" EPOXY COATED TIE BARS AT 24" C-C COST IS INCLUDED IN THE COST OF PAVEMENT OR CURB AND GUTTER
- ⑤ CONCRETE BARRIER, DOUBLE FACE, 42" HEIGHT
- ⑥ NOT USED
- ⑦ NOT USED
- ⑧ NOT USED
- ⑨ COMBINATION CONCRETE CURB AND GUTTER, TYPE M-4.24
- ⑩ SEEDING AND FURNISHED AND PLACE TOP SOIL 4"
- ⑪ STEEL PLATE BEAM GUARDRAIL, TYPE A
- ⑫ NOT USED
- ⑬ NOT USED
- ⑭ NOT USED
- ⑮ NOT USED
- ⑯ NOT USED
- ⑰ NOT USED
- ⑱ STABILIZED SUB-BASE-4"
- ⑲ NOT USED
- ⑳ BITUMINOUS SHOULDER SUPERPAVE 6"
- ㉑ NOT USED
- ㉒ NOT USED
- ㉓ POROUS GRANULAR EMBANKMENT SUBGRADE AND GEOTECHNICAL FABRIC FOR GROUND STABILIZATION (REFER TO CROSS SECTIONS FOR WIDTH)
- ㉔ COMBINATION CONCRETE CURB AND GUTTER, TYPE B-6.12
- ㉕ MOUNTABLE CONCRETE CURB AND GUTTER, TYPE M-2.18
- ㉖ GEOTECHNICAL FABRIC FOR GROUND STABILIZATION
- ㉗ WHITEWASHING FOR CONCRETE PAVEMENT
- ㉘ POLYMERIZED BITUMINOUS CONCRETE SURFACE COURSE, SUPERPAVE, MIX "F", N90, 1 3/4"
- ㉙ POLYMERIZED LEVELING BINDER (MACHINE METHOD), SUPERPAVE, IL-4.75, N50, 3/4"
- ㉚ CONCRETE BARRIER BASE
- ㉛ BITUMINOUS CONCRETE SURFACE COURSE, SUPERPAVE MIX "D", N70, 2"
- ㉜ BITUMINOUS CONCRETE BINDER COURSE, SUPERPAVE IL-19, N70, 12 1/4"
- ㉝ AGGREGATE SUBGRADE, 12"
- ㉞ BITUMINOUS CONCRETE BINDER COURSE, SUPERPAVE IL-19, N70, 11 3/4"
- ㉟ BITUMINOUS SHOULDER SUPERPAVE 8"

**Edwards and Kelcey**

REVISIONS	
NAME	DATE

ILLINOIS DEPARTMENT OF TRANSPORTATION  
**PROPOSED TYPICAL SECTIONS**  
**WILLOW ROAD**  
 OVER US 45/IL 21 (MILWAUKEE AVE)  
 AND OVER DES PLAINES RIVER  
 SCALE N.T.S. DRAWN BY M.J.P.  
 DATE JANUARY 2005 CHECKED BY P.J.M.