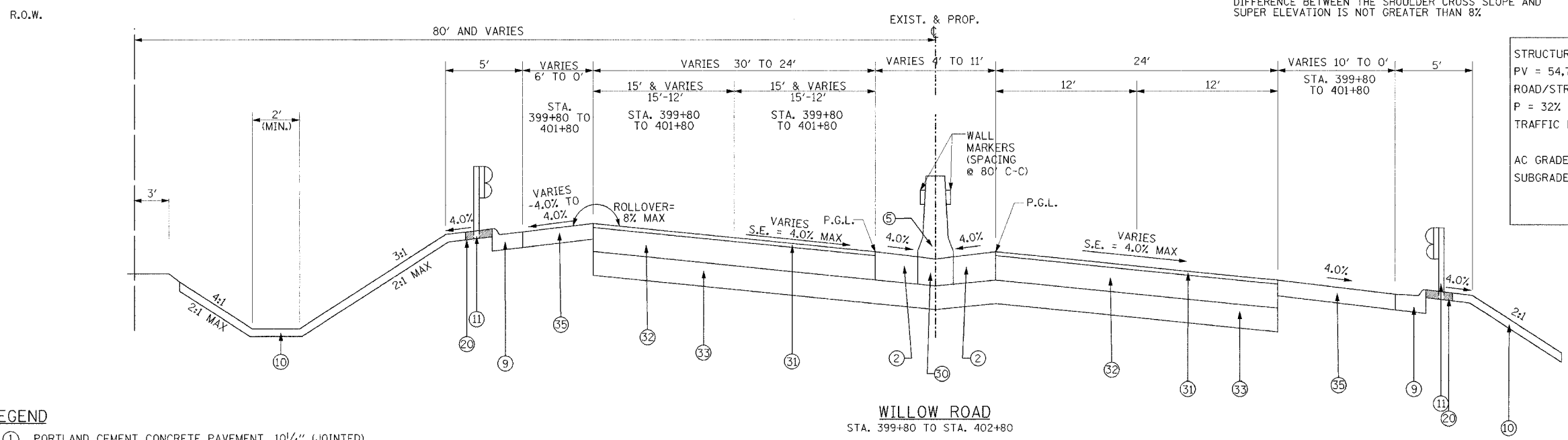


WILLOW ROAD
STA. 384+90 TO STA. 389+50

*WESTBOUND INSIDE SHOULDER SLOPE VARIES SUCH THAT THE DIFFERENCE BETWEEN THE SHOULDER CROSS SLOPE AND SUPER ELEVATION IS NOT GREATER THAN 8%



WILLOW ROAD
STA. 399+80 TO STA. 402+80

10-YEAR PAVEMENT DESIGN

STRUCTURAL TRAFFIC:	YEAR 2010
PV = 54,722	SU = 1,263
ROAD/STREET CLASSIFICATION:	MU = 1,436
P = 32%	CLASS 1
S = 45%	M = 45%
TRAFFIC FACTOR: ACTUAL TF = 3.90	AC TYPE = 10
MINIMUM TF = 2.13	
AC GRADE: BINDER = PG 64-22	SURFACE = PG 64-22
SUBGRADE SUPPORT RATING:	
SSR = 2.00 (STA. TO)	
SSR = 2.00 (STA. TO)	

LEGEND

- | | | |
|---|--|------------------------------------|
| ① PORTLAND CEMENT CONCRETE PAVEMENT, 10 1/4" (JOINTED) | ⑩ SEEDING AND FURNISHED AND PLACE TOP SOIL 4" | ⑳ BITUMINOUS SHOULDER SUPERPAVE 6" |
| ② PORTLAND CEMENT CONCRETE SHOULDERS 10 1/4" | ⑪ STEEL PLATE BEAM GUARDRAIL, TYPE A | |
| ③ SUB-BASE GRANULAR MATERIAL, TYPE B-12" | ⑫ NOT USED | |
| ④ NO. 6x30" EPOXY COATED TIE BARS AT 30" C-C COST IS INCLUDED IN THE COST OF PAVEMENT OR CURB AND GUTTER | ⑬ NOT USED | |
| ④A NO. 8x30" EPOXY COATED TIE BARS AT 24" C-C COST IS INCLUDED IN THE COST OF PAVEMENT OR CURB AND GUTTER | ⑭ NOT USED | |
| ④B NO. 6x30" EPOXY COATED TIE BARS AT 24" C-C COST IS INCLUDED IN THE COST OF PAVEMENT OR CURB AND GUTTER | ⑮ NOT USED | |
| ⑤ CONCRETE BARRIER, DOUBLE FACE, 42" HEIGHT | ⑯ NOT USED | |
| ⑥ NOT USED | ⑰ NOT USED | |
| ⑦ NOT USED | ⑱ STABILIZED SUB-BASE-4" | |
| ⑧ NOT USED | ⑲ NOT USED | |
| ⑨ COMBINATION CONCRETE CURB AND GUTTER, TYPE M-4.24 | ⑳ BITUMINOUS SHOULDER SUPERPAVE 6" | |
| | ㉑ NOT USED | |
| | ㉒ NOT USED | |
| | ㉓ POROUS GRANULAR EMBANKMENT SUBGRADE AND GEOTECHNICAL FABRIC FOR GROUND STABILIZATION (REFER TO CROSS SECTIONS FOR WIDTH) | |
| | ㉔ COMBINATION CONCRETE CURB AND GUTTER, TYPE B-6.12 | |
| | ㉕ MOUNTABLE CONCRETE CURB AND GUTTER, TYPE M-2.18 | |
| | ㉖ GEOTECHNICAL FABRIC FOR GROUND STABILIZATION | |
| | ㉗ WHITEWASHING FOR CONCRETE PAVEMENT | |
| | ㉘ POLYMERIZED BITUMINOUS CONCRETE SURFACE COURSE, SUPERPAVE, MIX "F", N90, 1 3/4" | |
| | ㉙ POLYMERIZED LEVELING BINDER (MACHINE METHOD), SUPERPAVE, IL-4.75, N50, 3/4" | |
| | ㉚ CONCRETE BARRIER BASE | |
| | ㉛ BITUMINOUS CONCRETE SURFACE COURSE, SUPERPAVE MIX "D", N70, 2" | |
| | ㉜ BITUMINOUS CONCRETE BINDER COURSE, SUPERPAVE IL-19, N70, 12 1/4" | |
| | ㉝ AGGREGATE SUBGRADE, 12" | |
| | ㉞ BITUMINOUS CONCRETE BINDER COURSE, SUPERPAVE IL-19, N70, 11 3/4" | |
| | ㉟ BITUMINOUS SHOULDER SUPERPAVE 8" | |

Edwards and Kelcey	
REVISIONS	
NAME	DATE

ILLINOIS DEPARTMENT OF TRANSPORTATION
**PROPOSED TYPICAL SECTIONS
WILLOW ROAD**
WILLOW ROAD
OVER US 45/IL 21 (MILWAUKEE AVE)
AND OVER DES PLAINES RIVER
SCALE N.T.S. DRAWN BY M.J.P.
DATE JANUARY 2005 CHECKED BY P.J.M.

TYP-3
02/26/05
01/12/2005