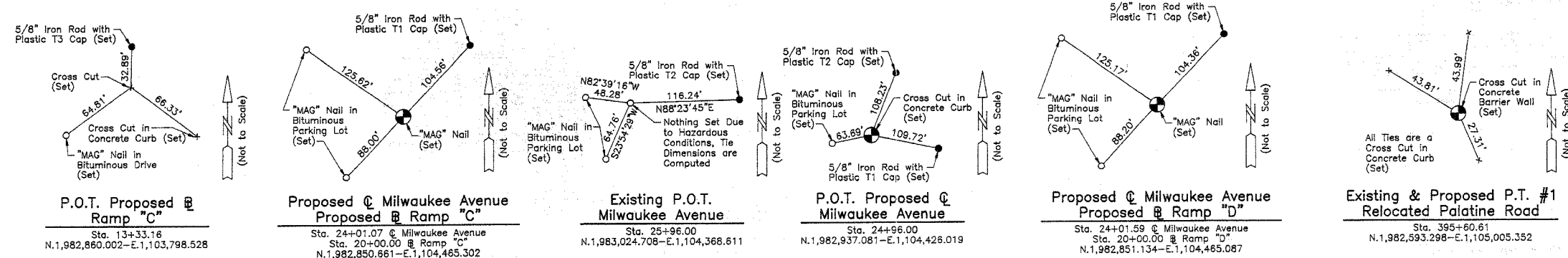
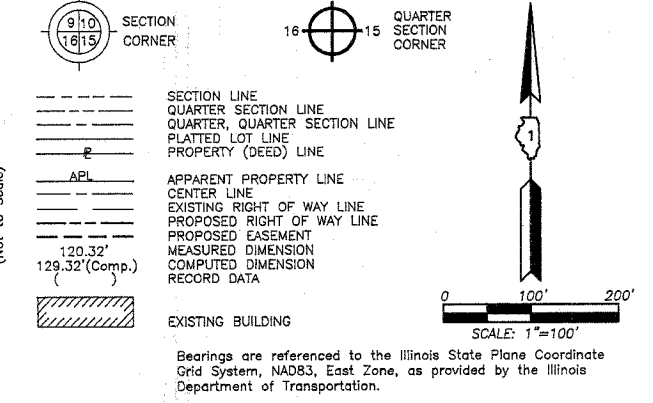


PART OF THE SE 1/4 OF SEC. 13 AND PART OF THE NE 1/4 OF SEC. 24, TWP. 42 N., R. 11 E. OF THE 3RD. P.M., IN COOK COUNTY, ILLINOIS.

FOR THE INFORMATION ONLY

LEGEND



Existing & Proposed Pavement Relocated Road Curve #1

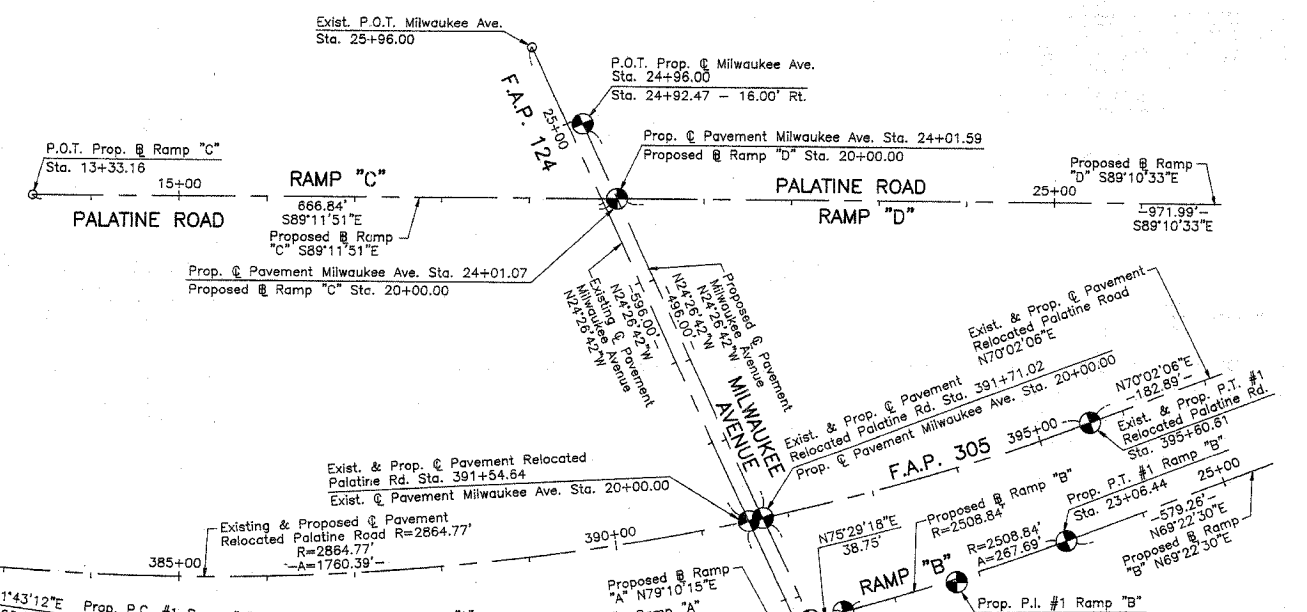
P.I.	= Sta. 387+09.20
Δ	= 35°12'29"
R	= 2864.77'
T	= 908.98'
L	= 1760.39'
E	= 140.75'
P.C.	= Sta. 378+00.22
P.T.	= Sta. 395+60.61

Proposed Ramp "A" Curve #1

P.I.	= Sta. 15+29.40
Δ	= 19°06'33"
R	= 2234.84'
T	= 376.18'
L	= 745.36'
E	= 31.44'
P.C.	= Sta. 11+53.22
P.T.	= Sta. 18+98.58

Proposed Ramp "B" Curve #1

P.I.	= Sta. 21+72.72
Δ	= 6°08'48"
R	= 2508.84'
T	= 133.97'
L	= 267.69'
E	= 3.57'
P.C.	= Sta. 20+38.75
P.T.	= Sta. 23+06.44

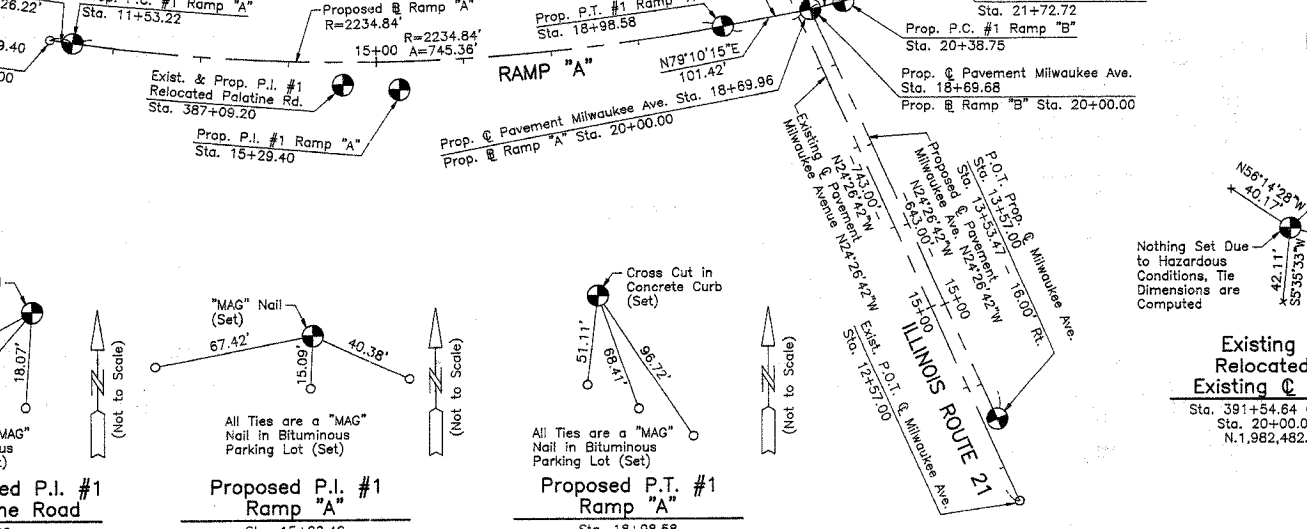
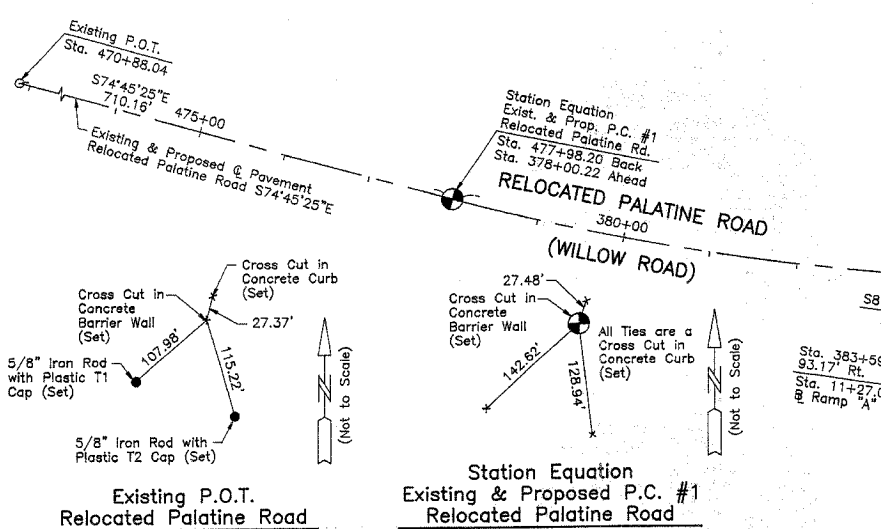


STATE OF ILLINOIS
 COUNTY OF LAKE
 THIS IS TO CERTIFY THAT WE, JORGENSEN & ASSOCIATES, INC., AN ILLINOIS PROFESSIONAL LAND SURVEYOR CORPORATION, NUMBER 48-80, HAVE SURVEYED THE PLAT OF HIGHWAYS SHOWN HEREON, SECTION 13, TOWNSHIP 42N., RANGE 11E. AND SECTION 24, TOWNSHIP 42N., RANGE 11E. OF THE THIRD PRINCIPAL MERIDIAN, COOK COUNTY, THAT THE SURVEY IS TRUE AND COMPLETE AS SHOWN TO THE BEST OF MY KNOWLEDGE AND BELIEF, THAT THE PLAT CORRECTLY REPRESENTS SAID SURVEY, THAT ALL MONUMENTS FOUND AND ESTABLISHED ARE OF PERMANENT QUALITY AND OCCUPY THE POSITIONS SHOWN THEREON AND THAT THE MONUMENTS ARE SUFFICIENT TO ENABLE THE SURVEY TO BE RETRACED. MADE FOR THE DEPARTMENT OF TRANSPORTATION, STATE OF ILLINOIS.

DATED AT LAKE VILLA, ILLINOIS THIS 27th DAY OF March 20 2014.

CHRISTIAN H. JORGENSEN
 PRESIDENT
 ILLINOIS PROFESSIONAL LAND SURVEYOR NO. 35-2797

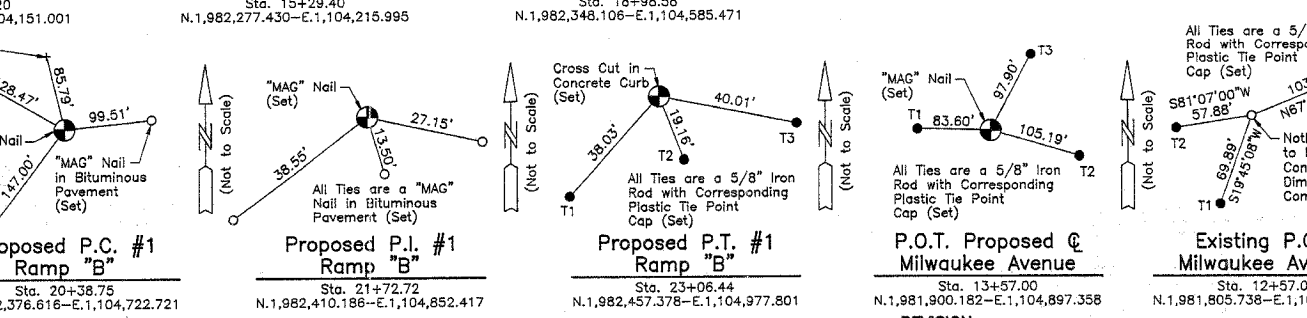
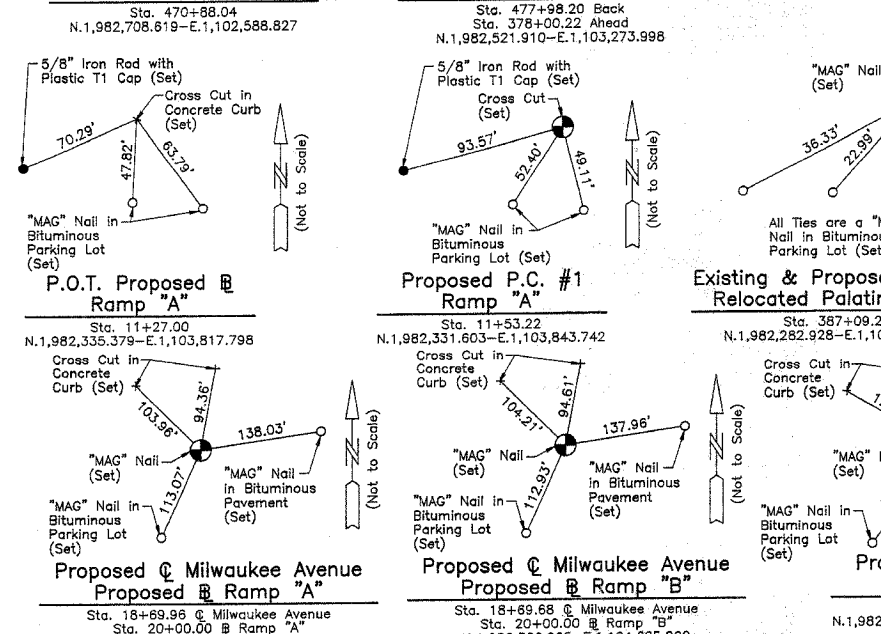
NOTE: COORDINATES ARE GROUND VALUES AND CAN BE CONVERTED TO GRID VALUES BY MULTIPLYING THE PUBLISHED GROUND COORDINATES BY 0.999996608.



FOR THE INFORMATION ONLY

JORGENSEN & ASSOCIATES, INC.
 120 PARK AVENUE
 LAKE VILLA, ILLINOIS 60046
 (847) 356-3371

SHEET 1 IS A COVER SHEET AND IS NOT RECORDED.



PLAT OF HIGHWAYS
 STATE OF ILLINOIS
 DEPARTMENT OF TRANSPORTATION
 F.A.P. 305 (WILLOW ROAD)

SECTION 151BR5
 PROJECT 12+57.00
 STATION 378+00.22
 STATION 470+88.04
 SCALE: 1"=100'

COOK COUNTY
 JOB NO. R-90-017-96
 TO STATION 25+96.00
 TO STATION 397+00
 TO STATION 477+98.20
 SHEET 23 OF 28

BUREAU OF LAND ACQUISITION
 201 WEST CENTER COURT
 SCHAUMBURG, ILLINOIS 60196

REVISION DATE

REVISION

MADE BY

DATE	
BY	
MADE	
CHECKED	
INKED	
ROW	
PLAT	
NO.	
NOTEBOOK	
NO.	