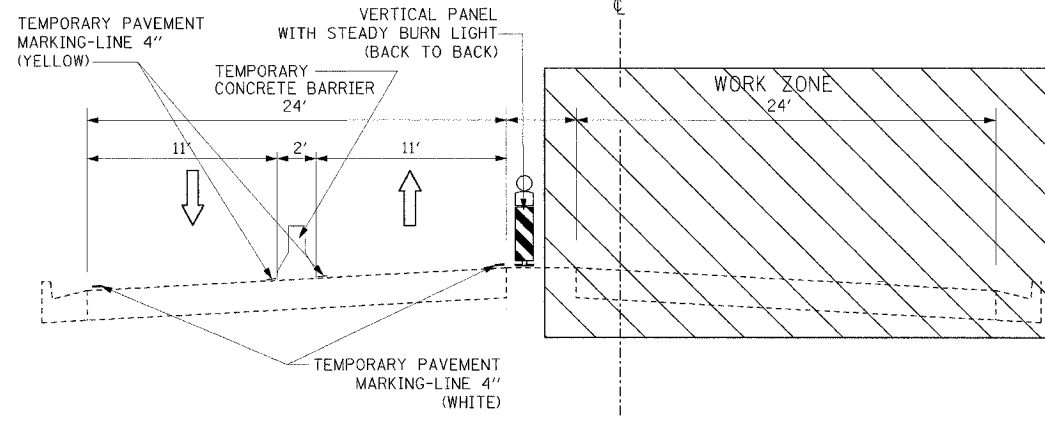
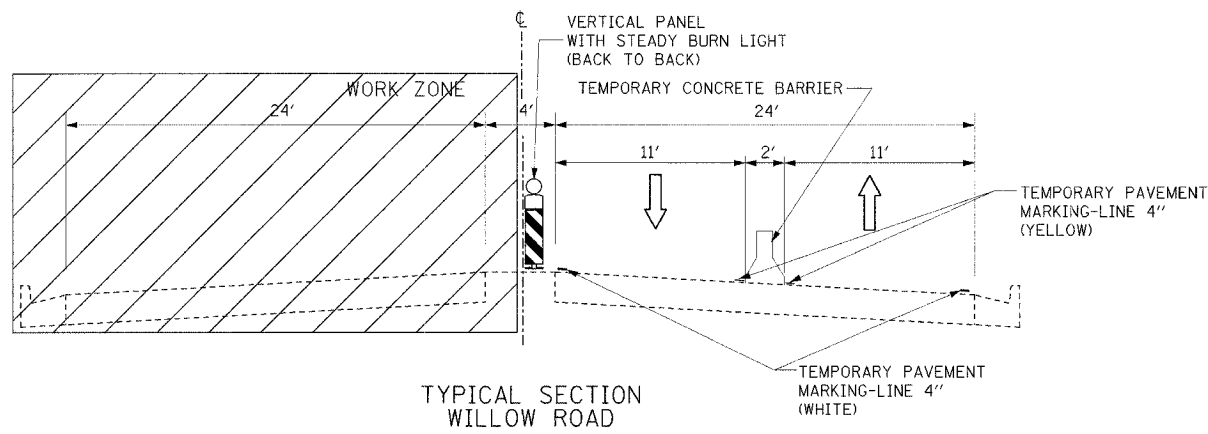


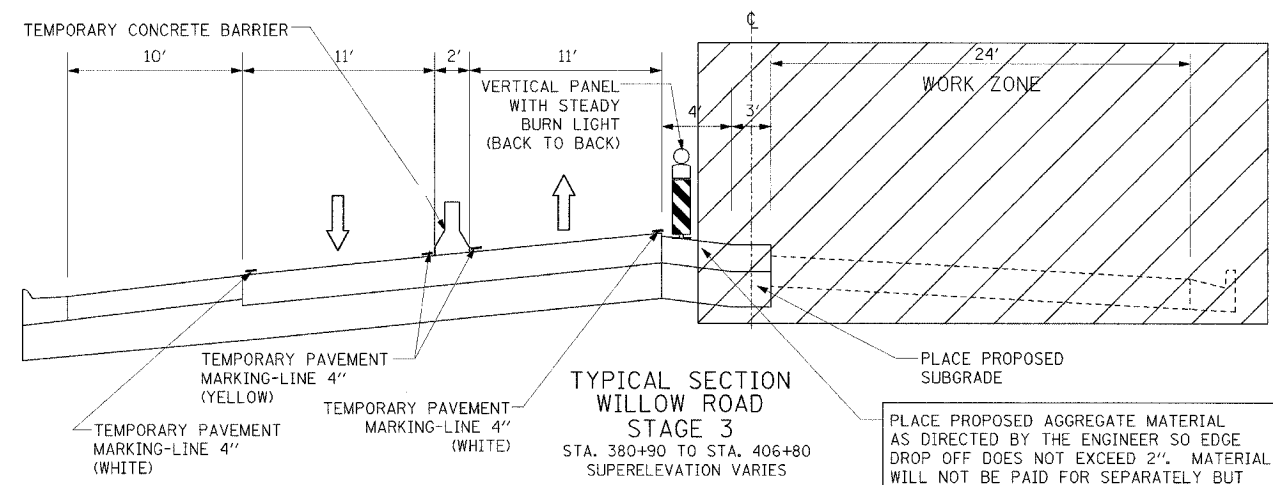
TYPICAL SECTION
WILLOW ROAD
PRESTAGE
REMOVE MEDIAN BARRIER
STA. 380+90 TO STA. 406+80



TYPICAL SECTION
WILLOW ROAD
STAGE 1
INITIAL STORM SEWER CONSTRUCTION
STA. 380+90 TO STA. 406+80

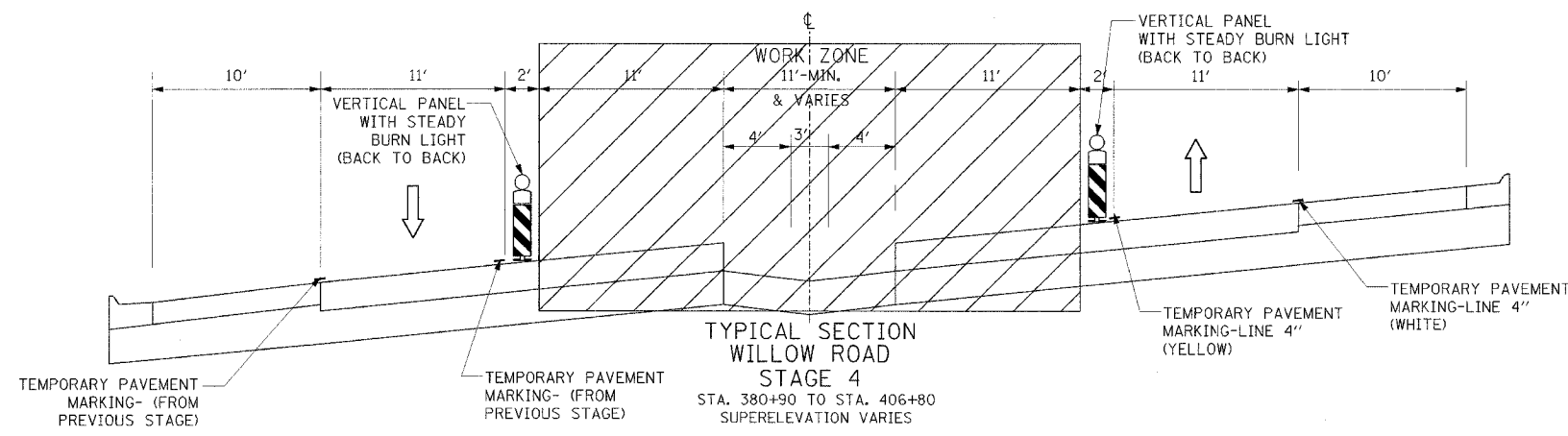


TYPICAL SECTION
WILLOW ROAD
STAGE 2
STA. 380+90 TO STA. 406+80



TYPICAL SECTION
WILLOW ROAD
STAGE 3
STA. 380+90 TO STA. 406+80
SUPERELEVATION VARIES

PLACE PROPOSED SUBGRADE
PLACE PROPOSED AGGREGATE MATERIAL AS DIRECTED BY THE ENGINEER SO EDGE DROP OFF DOES NOT EXCEED 2". MATERIAL WILL NOT BE PAID FOR SEPARATELY BUT IS INCLUDED IN THE COST OF TRAFFIC CONTROL AND PROTECTION (SPECIAL)



TYPICAL SECTION
WILLOW ROAD
STAGE 4
STA. 380+90 TO STA. 406+80
SUPERELEVATION VARIES

Edwards AND Kelcey	
REVISIONS	DATE

MOT-2
ILLINOIS DEPARTMENT OF TRANSPORTATION
**SUGGESTED CONSTRUCTION STAGING
WILLOW ROAD**
WILLOW ROAD
OVER US 45/IL 21 (MILWAUKEE AVE)
AND OVER DES PLAINES RIVER
SCALE N.T.S. DRAWN BY M.J.P.
DATE JANUARY 2005 CHECKED BY P.J.M.

03/25/05 03:50:02 PM