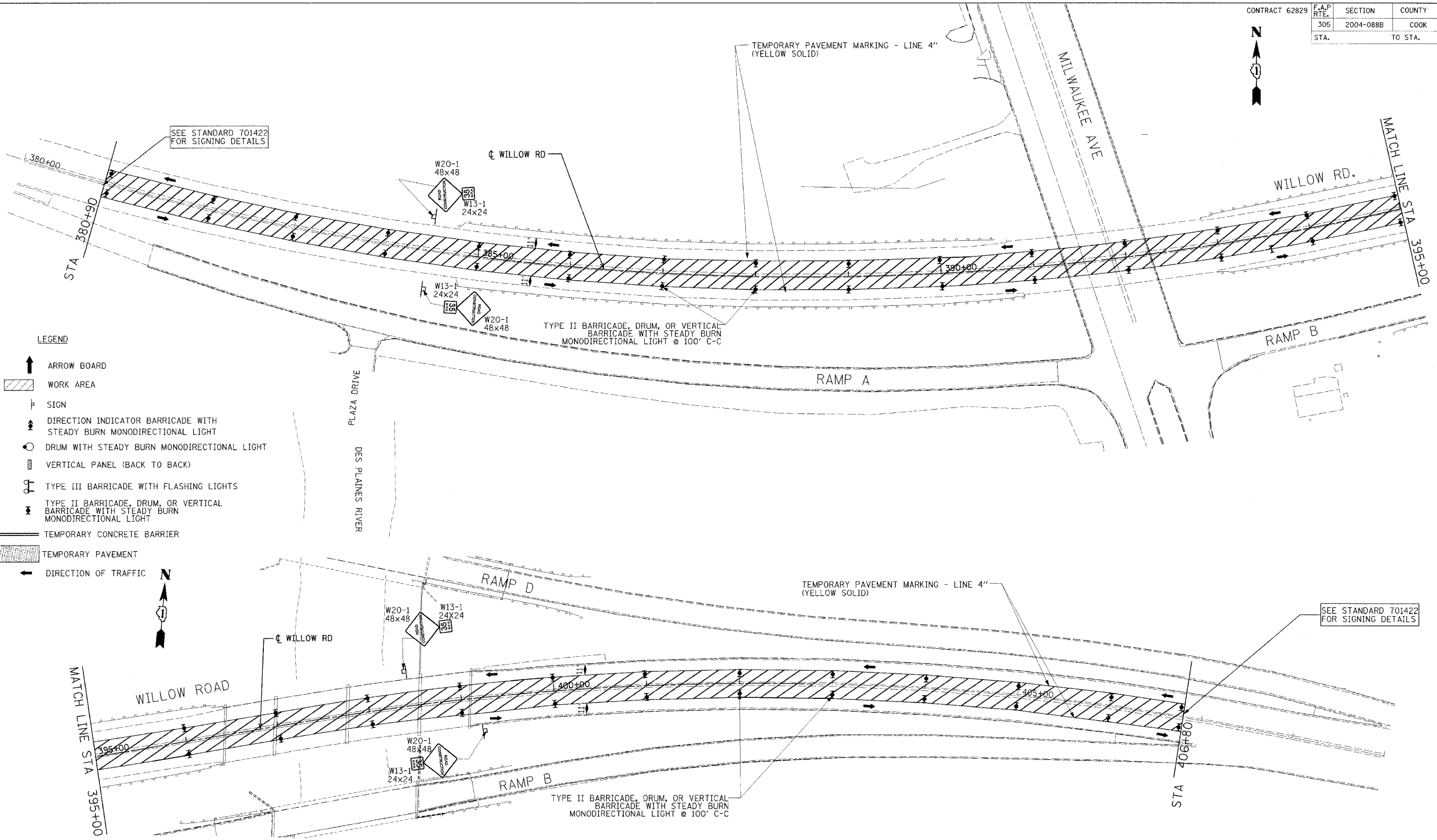


CONTRACT 62829	F.A.P. RTE.	SECTION	COUNTY	TOTAL SHEETS	SHEET NO.
	305	2004-088B	COOK	145	29A
	STA.	TO STA.			



- LEGEND**
- ↑ ARROW BOARD
 - ▨ WORK AREA
 - ⊥ SIGN
 - ↑ DIRECTION INDICATOR BARRICADE WITH STEADY BURN MONODIRECTIONAL LIGHT
 - DRUM WITH STEADY BURN MONODIRECTIONAL LIGHT
 - ▨ VERTICAL PANEL (BACK TO BACK)
 - ⊥ TYPE III BARRICADE WITH FLASHING LIGHTS
 - ↑ TYPE II BARRICADE, DRUM, OR VERTICAL BARRICADE WITH STEADY BURN MONODIRECTIONAL LIGHT
 - TEMPORARY CONCRETE BARRIER
 - ▨ TEMPORARY PAVEMENT
 - ← DIRECTION OF TRAFFIC



MOT-2A

**Edwards
AND
Kelcey**

ILLINOIS DEPARTMENT OF TRANSPORTATION
**SUGGESTED CONSTRUCTION STAGING
PRESTAGE
WILLOW ROAD**

WILLOW ROAD
OVER US 45/IL 21 (MILWAUKEE AVE)
AND OVER DES PLAINES RIVER

REVISIONS	
NAME	DATE

DATE JANUARY 2005

DRAWN BY CADD
CHECKED BY PJM

PA00000919/Access/Advances Contract/Will/29A/07

07/12/2005 03:50:23 PM