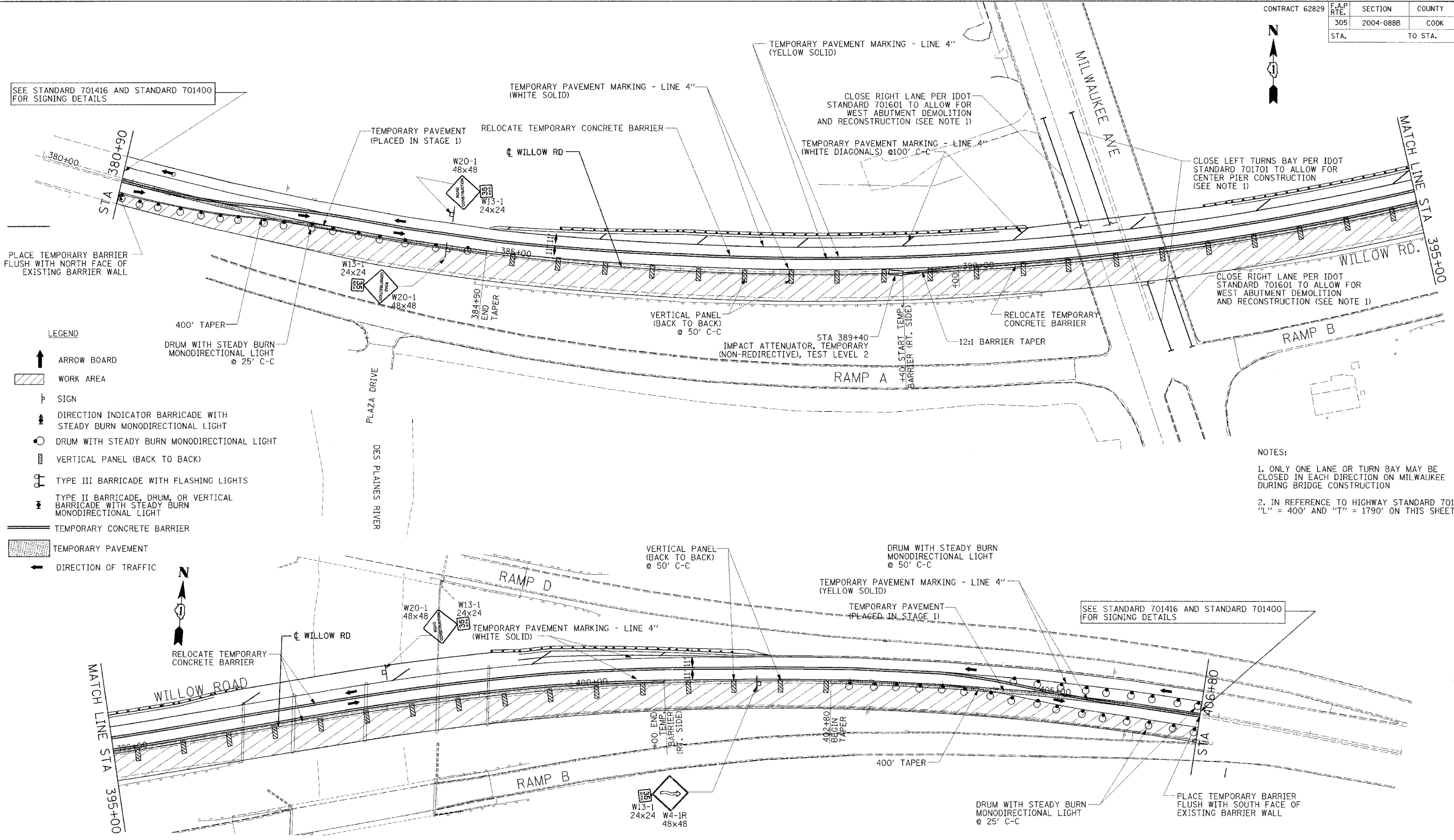


CONTRACT 62829	F.A.P. RTE.	SECTION	COUNTY	TOTAL SHEETS	SHEET NO.
	305	2004-088B	COOK	145	32
STA.	TO STA.				



SEE STANDARD 701416 AND STANDARD 701400 FOR SIGNING DETAILS

PLACE TEMPORARY BARRIER FLUSH WITH NORTH FACE OF EXISTING BARRIER WALL

LEGEND

- ARROW BOARD
- WORK AREA
- SIGN
- DIRECTION INDICATOR BARRICADE WITH STEADY BURN MONODIRECTIONAL LIGHT
- DRUM WITH STEADY BURN MONODIRECTIONAL LIGHT
- VERTICAL PANEL (BACK TO BACK)
- TYPE III BARRICADE WITH FLASHING LIGHTS
- TYPE II BARRICADE, DRUM, OR VERTICAL BARRICADE WITH STEADY BURN MONODIRECTIONAL LIGHT
- TEMPORARY CONCRETE BARRIER
- TEMPORARY PAVEMENT
- DIRECTION OF TRAFFIC

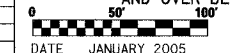
NOTES:

1. ONLY ONE LANE OR TURN BAY MAY BE CLOSED IN EACH DIRECTION ON MILWAUKEE DURING BRIDGE CONSTRUCTION
2. IN REFERENCE TO HIGHWAY STANDARD 701416, "L" = 400' AND "T" = 1790' ON THIS SHEET

SEE STANDARD 701416 AND STANDARD 701400 FOR SIGNING DETAILS

Edwards and Kelcey	
REVISIONS	
NAME	DATE

MOT-5
 ILLINOIS DEPARTMENT OF TRANSPORTATION
SUGGESTED CONSTRUCTION STAGING
STAGE 3
WILLOW ROAD
 WILLOW ROAD
 OVER US 45/IL 21 (MILWAUKEE AVE)
 AND OVER DES PLAINES RIVER
 DATE JANUARY 2005
 DRAWN BY CADD
 CHECKED BY PJM



03/12/2005 03:55:54 PM Contract#W113.M01