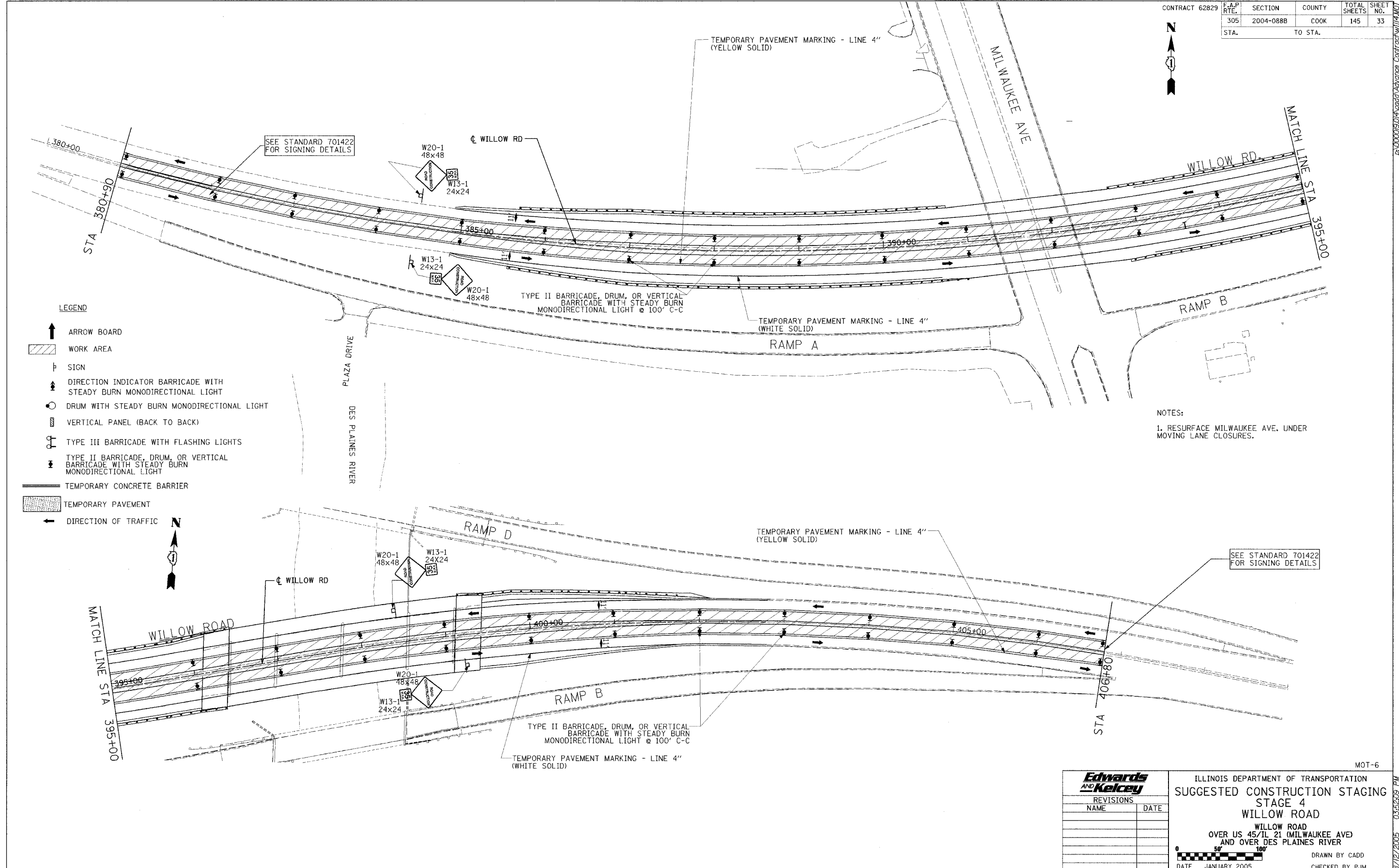


CONTRACT 62829	F.A.P. RTE.	SECTION	COUNTY	TOTAL SHEETS	SHEET NO.
	305	2004-088B	COOK	145	33
STA.	TO STA.				



- LEGEND**
- ↑ ARROW BOARD
 - ▨ WORK AREA
 - ⊥ SIGN
 - ↑ DIRECTION INDICATOR BARRICADE WITH STEADY BURN MONODIRECTIONAL LIGHT
 - DRUM WITH STEADY BURN MONODIRECTIONAL LIGHT
 - ▭ VERTICAL PANEL (BACK TO BACK)
 - ⊕ TYPE III BARRICADE WITH FLASHING LIGHTS
 - ⊕ TYPE II BARRICADE, DRUM, OR VERTICAL BARRICADE WITH STEADY BURN MONODIRECTIONAL LIGHT
 - TEMPORARY CONCRETE BARRIER
 - ▨ TEMPORARY PAVEMENT
 - ← DIRECTION OF TRAFFIC

NOTES:
 1. RESURFACE MILWAUKEE AVE. UNDER MOVING LANE CLOSURES.

REVISIONS	
NAME	DATE

MOT-6

**Edwards
AND
Kelcey**

ILLINOIS DEPARTMENT OF TRANSPORTATION
**SUGGESTED CONSTRUCTION STAGING
 STAGE 4
 WILLOW ROAD**
 WILLOW ROAD
 OVER US 45/IL 21 (MILWAUKEE AVE)
 AND OVER DES PLAINES RIVER

DATE JANUARY 2005

DRAWN BY CADD
 CHECKED BY PJM

P:\000019\04\cadd\Advances Contract\WILLOW

07/12/2005 03:55:09 PM