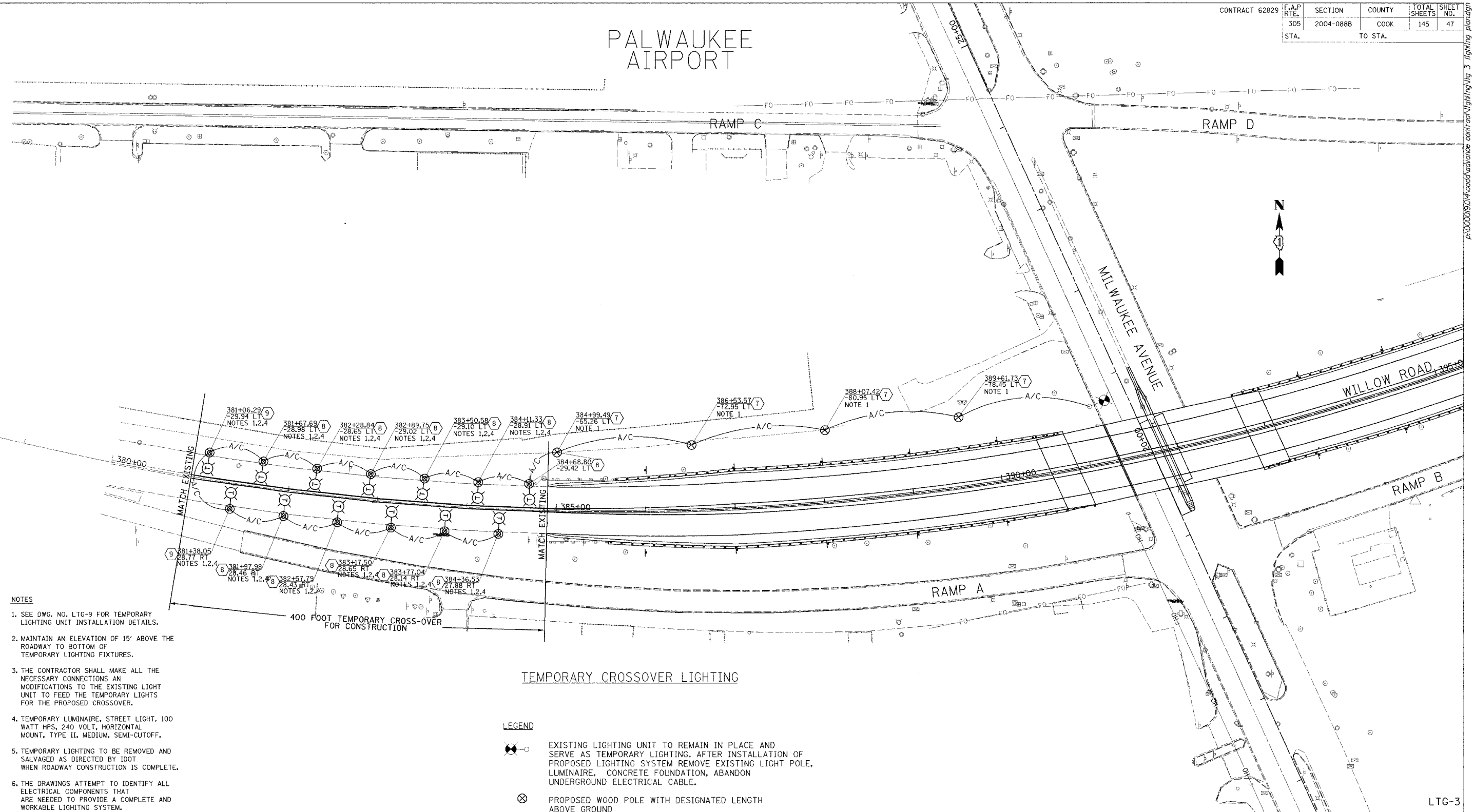


PALWAUKEE AIRPORT

CONTRACT 62829	F.A.P. RTE.	SECTION	COUNTY	TOTAL SHEETS	SHEET NO.
	305	2004-088B	COOK	145	47
	STA.	TO STA.			



- NOTES**
- SEE DWG. NO. LTG-9 FOR TEMPORARY LIGHTING UNIT INSTALLATION DETAILS.
 - MAINTAIN AN ELEVATION OF 15' ABOVE THE ROADWAY TO BOTTOM OF TEMPORARY LIGHTING FIXTURES.
 - THE CONTRACTOR SHALL MAKE ALL THE NECESSARY CONNECTIONS AND MODIFICATIONS TO THE EXISTING LIGHT UNIT TO FEED THE TEMPORARY LIGHTS FOR THE PROPOSED CROSSOVER.
 - TEMPORARY LUMINAIRE, STREET LIGHT, 100 WATT HPS, 240 VOLT, HORIZONTAL MOUNT, TYPE II, MEDIUM, SEMI-CUTOFF.
 - TEMPORARY LIGHTING TO BE REMOVED AND SALVAGED AS DIRECTED BY IDOT WHEN ROADWAY CONSTRUCTION IS COMPLETE.
 - THE DRAWINGS ATTEMPT TO IDENTIFY ALL ELECTRICAL COMPONENTS THAT ARE NEEDED TO PROVIDE A COMPLETE AND WORKABLE LIGHTING SYSTEM. HOWEVER, ALL SYSTEMS THAT ARE TO REMAIN OPERATIONAL DURING PHASED CONSTRUCTION AND ARE TO BE MODIFIED AS REQUIRED TO KEEP ROADWAY LIGHTING FUNCTIONING.
 - TEMPORARY WOOD POLE 30 FT
 - (8) TEMPORARY WOOD POLE 15 FT ABOVE ROADWAY
 - (9) TEMPORARY WOOD POLE 30 FT WITH LUMINAIRE MOUNTED AT 15 FT

TEMPORARY CROSSOVER LIGHTING

- LEGEND**
- EXISTING LIGHTING UNIT TO REMAIN IN PLACE AND SERVE AS TEMPORARY LIGHTING. AFTER INSTALLATION OF PROPOSED LIGHTING SYSTEM REMOVE EXISTING LIGHT POLE, LUMINAIRE, CONCRETE FOUNDATION, ABANDON UNDERGROUND ELECTRICAL CABLE.
 - PROPOSED WOOD POLE WITH DESIGNATED LENGTH ABOVE GROUND
 - PROPOSED TEMPORARY LIGHTING WITH WOOD POLE TO PROVIDE LIGHTING UNIT WITH DESIGNATED MOUNTING HEIGHT.
 - A/C AERIAL ELECTRIC CABLE: 2-1/2" #4 ALUMINUM W/ MESSENGER WIRE.

Edwards and Kelcey	
REVISIONS	
NAME	DATE

ILLINOIS DEPARTMENT OF TRANSPORTATION

WILLOW RD. & MILWAUKEE AVE
TEMPORARY LIGHTING PLAN

WILLOW ROAD
OVER US 45/IL 21 (MILWAUKEE AVE)
AND OVER DES PLAINES RIVER

SCALE 1"=50'
DATE JANUARY 2005

DRAWN BY CADD SC
CHECKED BY CDS

LTG-3

12/28/2004 09:05 AM