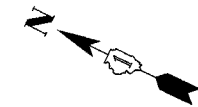
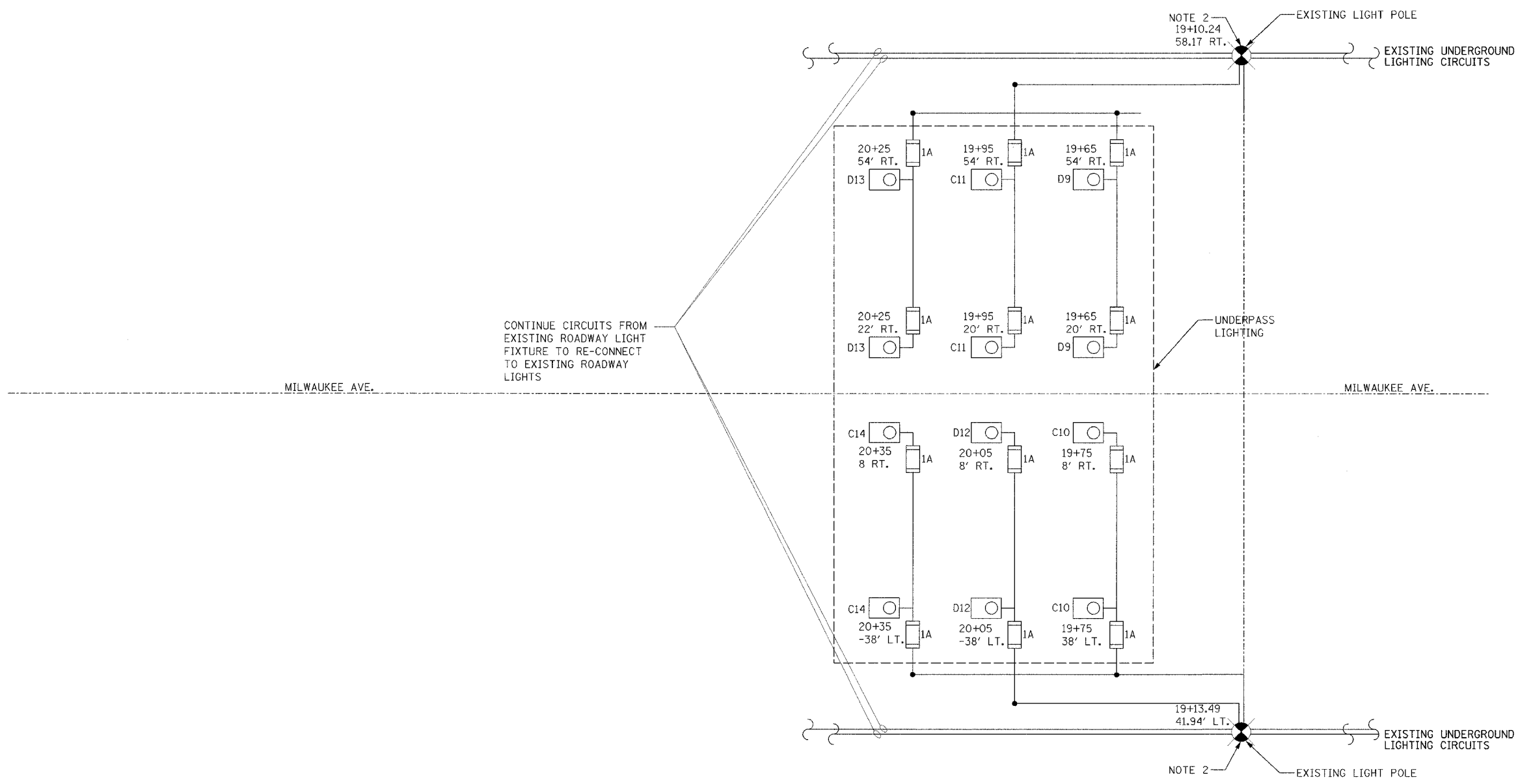


CONTRACT 62829	F.A.P. RTE.	SECTION	COUNTY	TOTAL SHEETS	SHEET NO.
	305	2004-088B	COOK	145	49
	STA.	TO STA.			



P:\000009\01\road\advance contract\lighting\fig 5 lighting plan.dgn



- NOTES:**
- SEE SHEET LTG-6 FOR UNDERPASS LIGHTING PLAN.
  - SPLICE INTO CIRCUITS IN EXISTING LIGHT POLE FOUNDATION AND EXTEND TO NEW UNDERPASS LIGHTING FIXTURES.

EXISTING POLE MOUNTED LIGHT FIXTURE

<b>Edwards AND Kelcey</b>	
REVISIONS	
NAME	DATE

LTG-5

ILLINOIS DEPARTMENT OF TRANSPORTATION

WILLOW RD. & MILWAUKEE AVE  
WIRING LINE DIAGRAM

WILLOW ROAD  
OVER US 45/IL 21 (MILWAUKEE AVE)  
AND OVER DES PLAINES RIVER

SCALE 1"=30'      DRAWN BY CADD SC  
DATE JANUARY 2005      CHECKED BY CDS

12/28/2004 10:35:12 AM