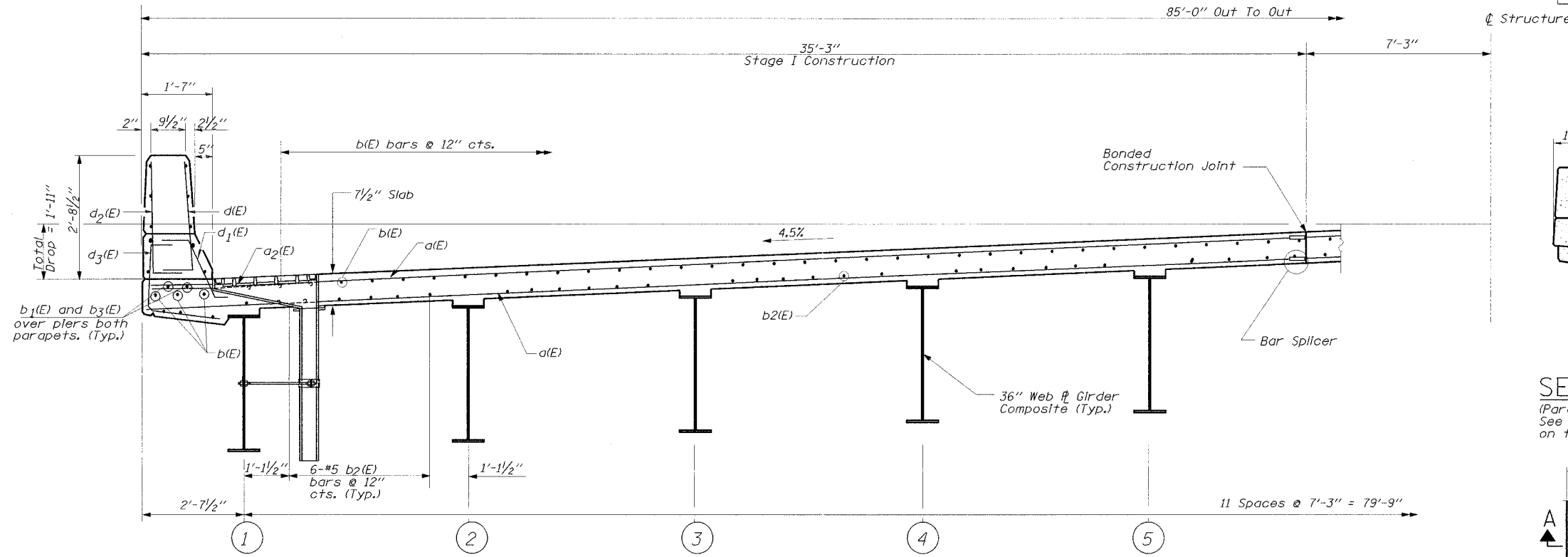
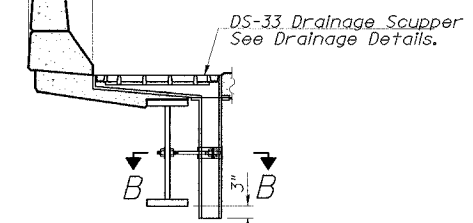
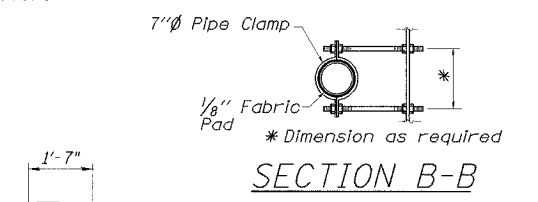


STATE OF ILLINOIS
DEPARTMENT OF TRANSPORTATION

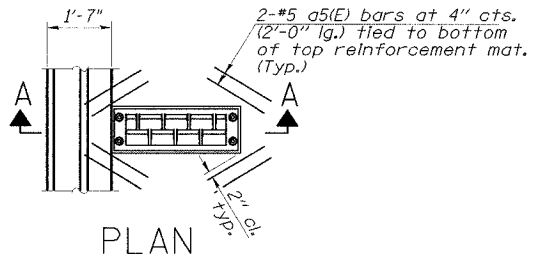
CONTRACT 62829	F.A.P. NO. 305	SECTION 2004-088B	COUNTY COOK	TOTAL SHEETS 145	SHEET NO. 62	SHEET NO. SA-9
OF SHEETS SA-30						



WESTBOUND SECTION THRU DECK
(Looking East)



SECTION A-A
(Parapet shown. Median Similar. See Eastbound Section Thru Deck on this Sheet)



PLAN

NOTES:

1. Reinforcement bars designated (E) shall be epoxy coated.
2. Cut longitudinal bars as needed to clear drainage scupper.
3. For roadway and lane widths see Sheet SA-2.

SUPERSTRUCTURE (DECK) II
WILLOW ROAD OVER
MILWAUKEE AVENUE
(IL RTE. 21/U.S. 45)
F.A.P. RTE. 305
SECTION 2004-088B
COOK COUNTY
STA. 391+71.02 @ WILLOW RD.
STR. NO. 016-2786

EDWARDS AND KELCEY

DESIGNED	AJN
CHECKED	JAP
DRAWN	ABW
CHECKED	EL

12/28/2004 11:59:29 AM P:\000092\4\road\advance\contract\46\Structure\46\Wllw-Plan\wllw-08.dwg