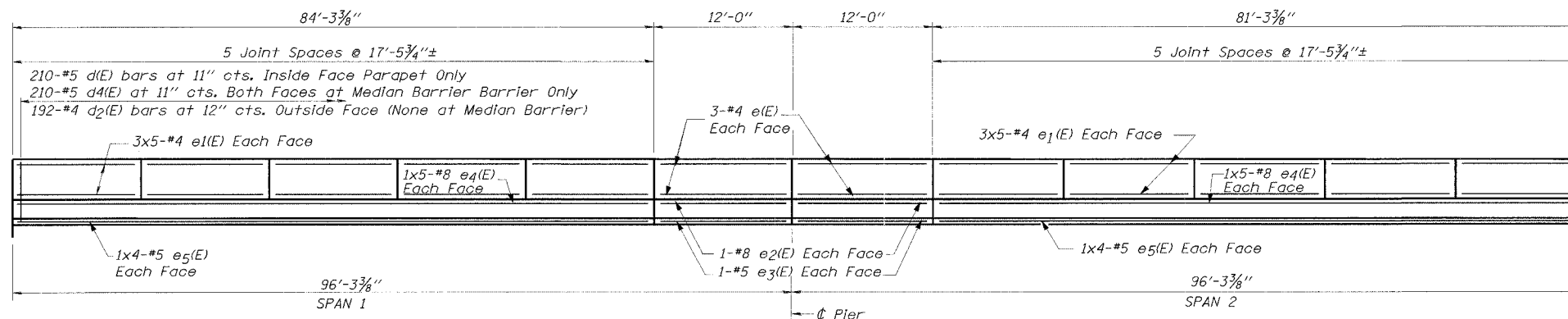


STATE OF ILLINOIS  
DEPARTMENT OF TRANSPORTATION

CONTRACT 62829

F.A.P. RTE. NO.	SECTION	COUNTY	TOTAL SPANS	SHEET NO.
305	2004-088B	COOK	145	63
FED. ROAD DIST. NO. 1	ILLINOIS	FED. AID PROJECT		

SHEET NO. SA-10  
OF SHEETS SA-3



INSIDE ELEVATION OF PARAPET  
(Median Barrier similar)

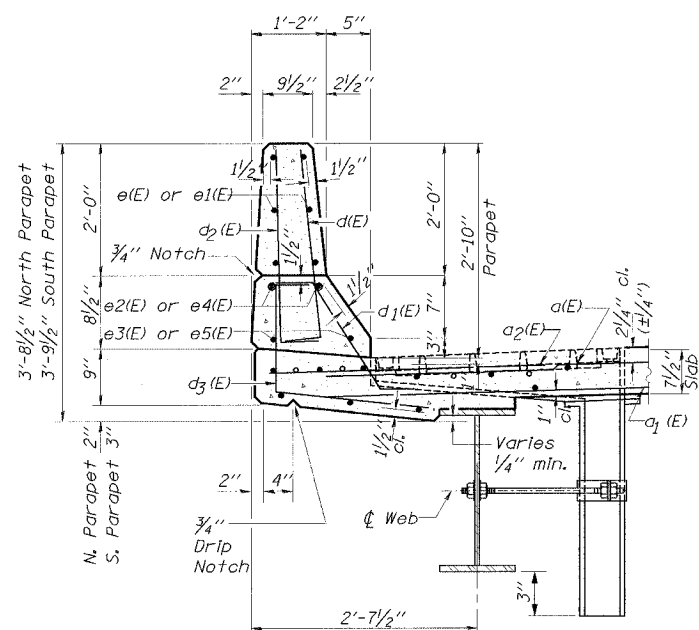
SUPERSTRUCTURE  
BILL OF MATERIAL

Bar	No.	Size	Length	Shape
a(E)	643	#5	34'-3"	—
a1(E)	770	#5	26'-0"	—
a2(E)	386	#6	4'-0"	—
a3(E)	2	#7	35'-1"	—
a4(E)	2	#6	35'-1"	—
a5(E)	32	#5	2'-0"	—
a6(E)	4	#7	26'-8"	—
a7(E)	6	#6	18'-3"	—
a9(E)	771	#5	17'-11"	—
b(E)	616	#5	29'-5"	—
b1(E)	84	#6	21'-4"	—
b2(E)	576	#5	25'-11"	—
b3(E)	84	#6	39'-0"	—
d(E)	420	#5	3'-0"	┌
d1(E)	414	#5	2'-5"	└
d2(E)	384	#4	3'-0"	┌
d3(E)	384	#4	3'-5"	└
d4(E)	420	#5	3'-8"	┌
e(E)	36	#4	14'-6"	—
e1(E)	180	#4	17'-0"	—
e2(E)	12	#8	14'-6"	—
e3(E)	12	#5	14'-6"	—
e4(E)	60	#8	17'-0"	—
e5(E)	48	#5	22'-0"	—
Reinforcement Bars, Epoxy Coated			Pound	115,840
Concrete Superstructure			Cu. Yds.	483.0
Bar Spllicers			Each	1061

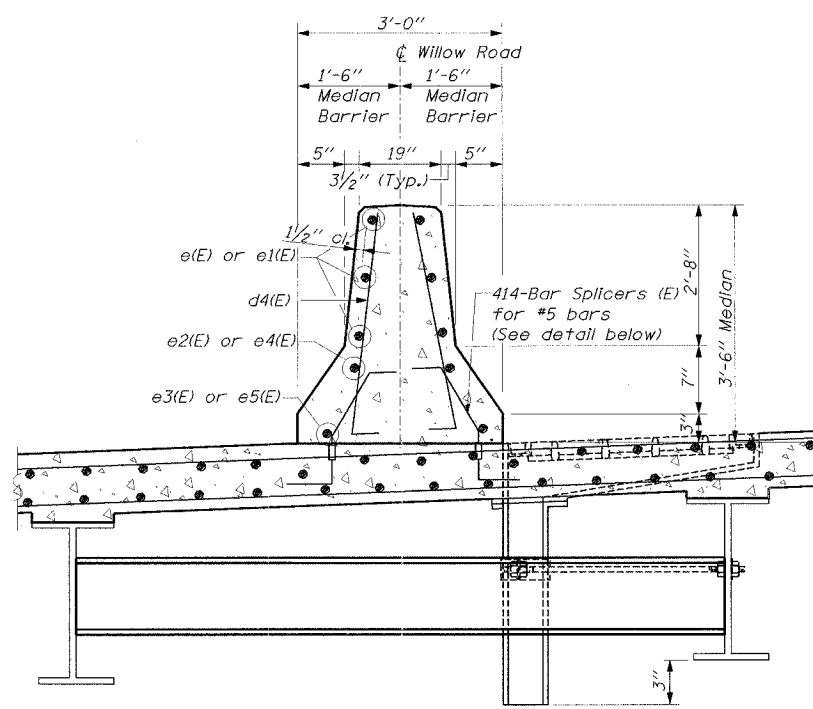
Reinforcement bars designated (E) shall be epoxy coated.

Bars indicated thus 1 x 6 -#5 etc. indicates 1 line of bars with 6 lengths per line.

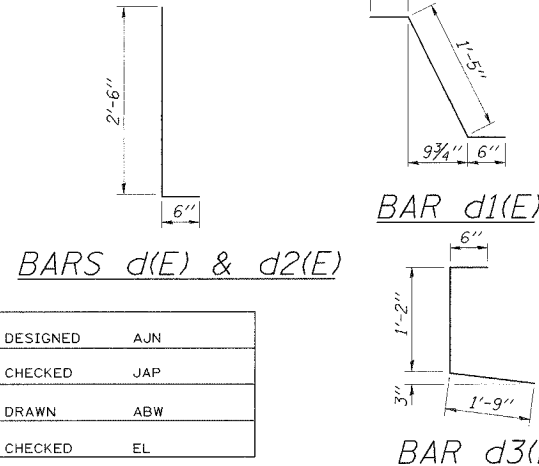
See sheet SA-18 for diaphragm bill of material.



SECTION THRU PARAPET



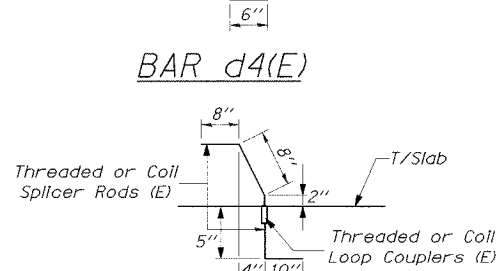
SECTION THRU MEDIAN BARRIER



BARS d(E) & d2(E)

BAR d1(E)

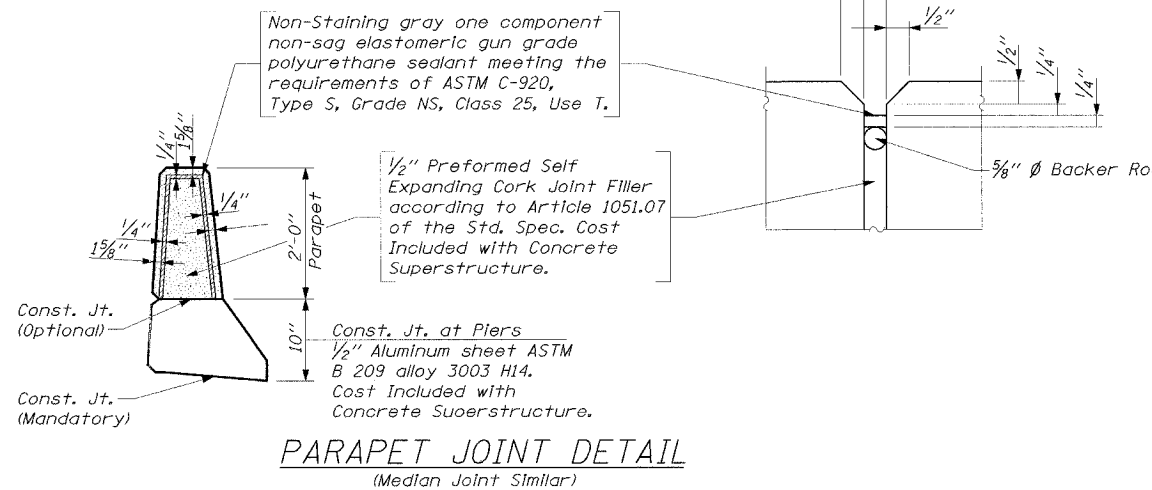
BAR d3(E)



BAR d4(E)

BAR SPLICER ASSEMBLY  
DETAIL FOR #5 BAR

Located at Median Barrier (414 Required, See SA-24 for min. capacity and pull-out strength required)



PARAPET JOINT DETAIL  
(Median Joint Similar)

SUPERSTRUCTURE DETAILS  
(BARRIER)  
WILLOW ROAD OVER  
MILWAUKEE AVENUE  
(IL RTE. 21/U.S. 45)  
F.A.P. RTE. 305  
SECTION 2004-088B  
COOK COUNTY  
STA. 391+71.02 @ WILLOW RD.  
STR. NO. 016-2786

EDWARDS AND KELCEY

01/12/2008 03:34:26 PM

D:\C00009\01A\0004\Advntee\_Confr\act\Adv\Structure3\Miller\Plenest\mhw-0.dwg

DESIGNED	AJN
CHECKED	JAP
DRAWN	ABW
CHECKED	EL