

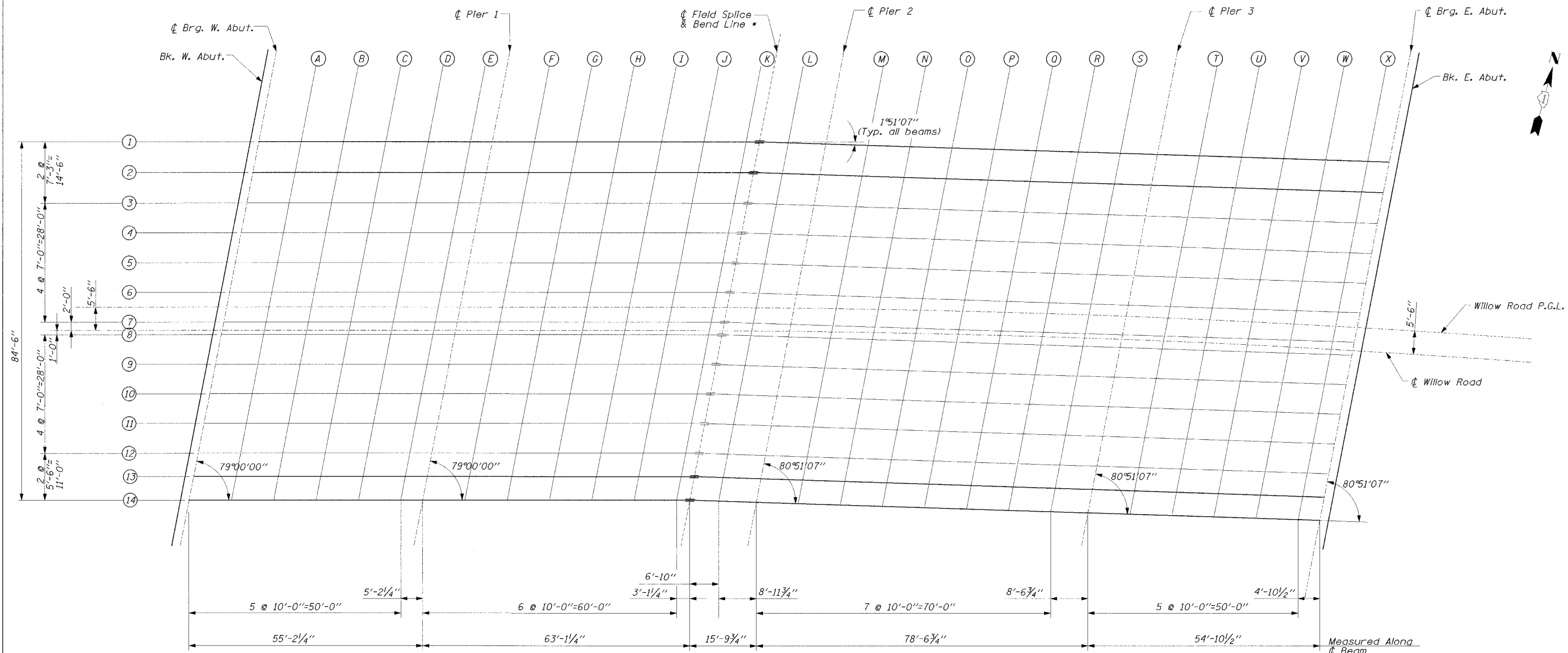
STATE OF ILLINOIS
DEPARTMENT OF TRANSPORTATION

CONTRACT 62829

F.A.P. RTE. NO.	SECTION	COUNTY	TOTAL SHEETS	SHEET NO.
305	2004-088B	COOK	145	88
FED. ROAD DIST. NO. 1	ILLINOIS	FED. AID PROJECT		

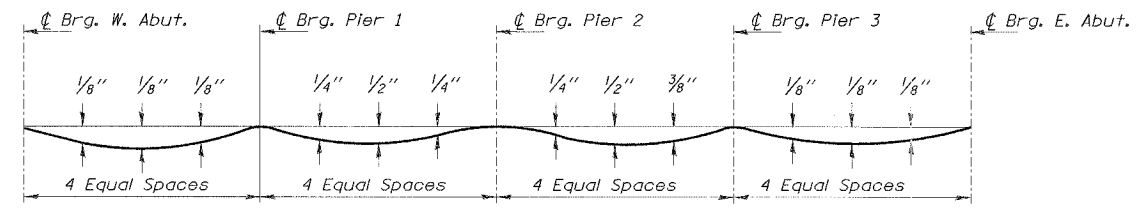
SHEET NO. SB-5
OF SHEETS SB-44

12/28/2004 03:52:4 AM



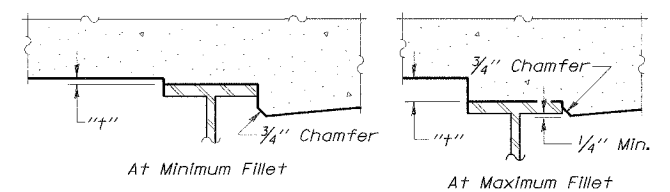
PLAN

* ϕ of all beams bends by $1^{\circ}51'07''$ as shown in plan



**NEW AND EXISTING
DEAD LOAD DEFLECTION DIAGRAM**
(Includes weight of concrete only.)

NOTE:
The above deflections are not to be used in the field if the engineer is working from the theoretical grade elevations adjusted for dead load deflections as shown on SB-6 through SB-7.



To determine "t": After all structural steel has been erected, elevations of the top flanges of the beams shall be taken at intervals shown above. These elevations subtracted from the "Theoretical Grade Elevations Adjusted for Dead Load Deflection" shown on sheets SB-6 to SB-7 minus slab thickness, equals the fillet heights "t" above top flange of beams.

FILLET HEIGHTS

DESIGNED	EL
CHECKED	JAS
DRAWN	ABW
CHECKED	EL

TOP OF SLAB ELEVATIONS I
WILLOW ROAD OVER
DES PLAINES RIVER
F.A.P. RTE. 305
SECTION 2004-088B
COOK COUNTY
STA. 397+76.18
STR. NO. 016-0530

EDWARDS AND KELCEY