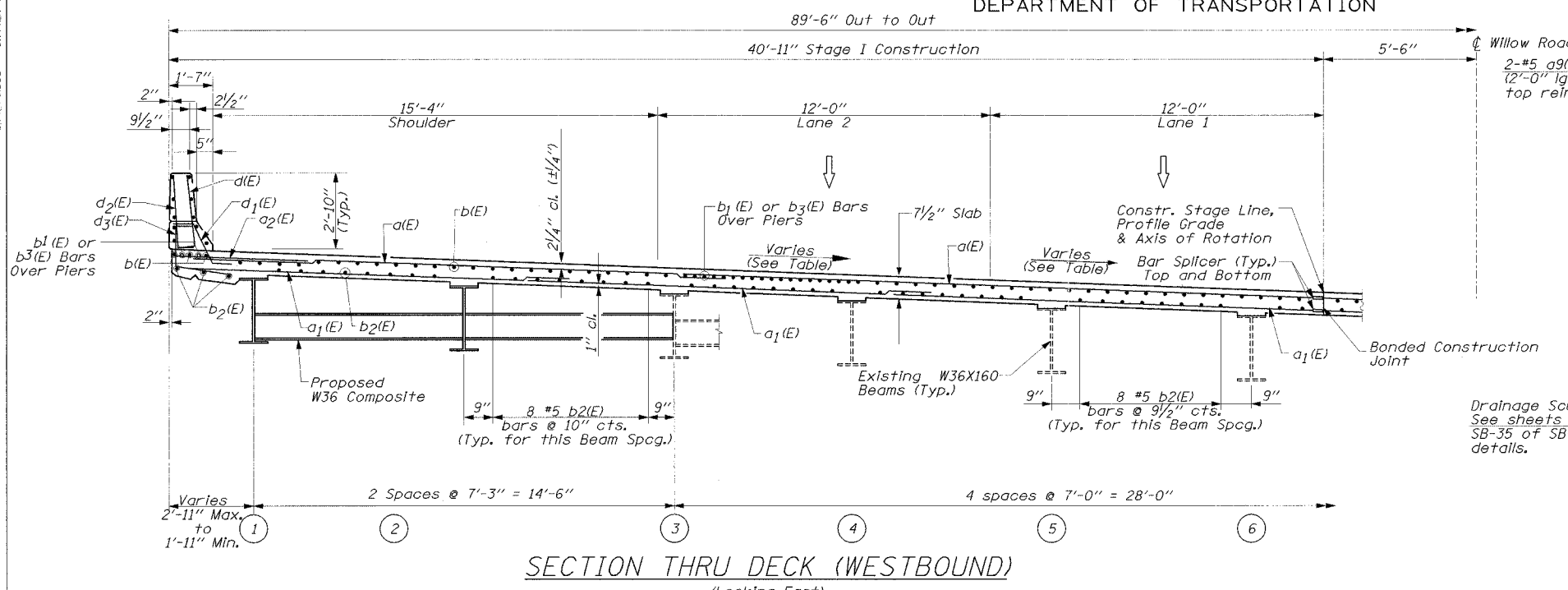


STATE OF ILLINOIS
DEPARTMENT OF TRANSPORTATION

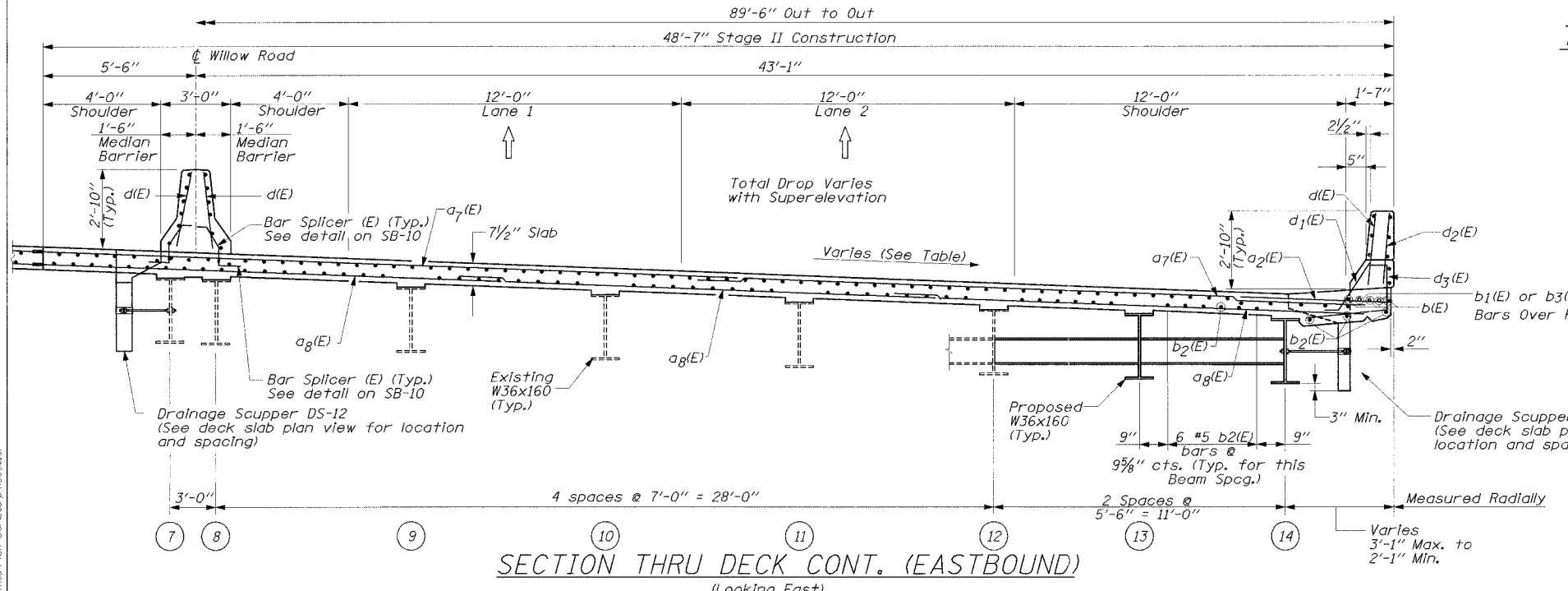
CONTRACT 62829	F.A.P. RTE. NO.	SHEET NO.	TOTAL SHEETS	SHEET NO.
	305	2004-0888	COOK	145
	2004-0888	COOK	145	92
	ILLINOIS	FED. AID PROJECT:		

SHEET NO. SB-9
OF SHEETS SB-44

01/12/2005 01:44:27 PM

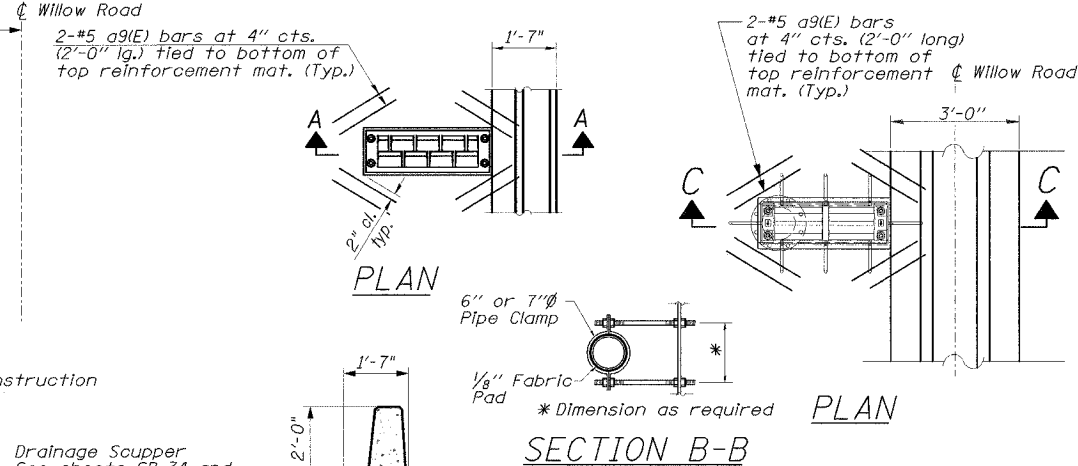
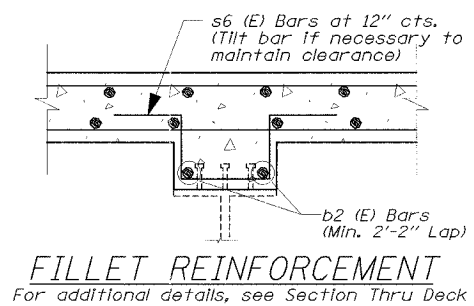
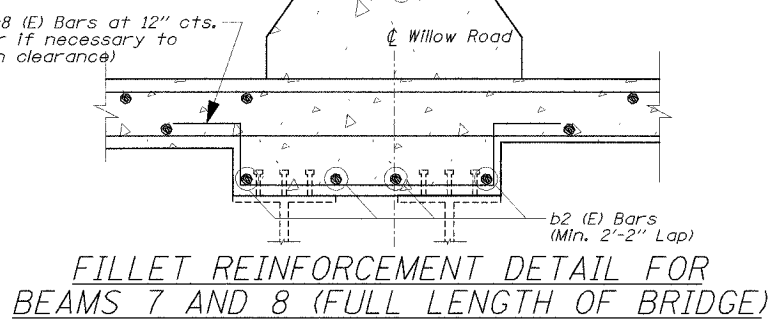


SECTION THRU DECK (WESTBOUND)
(Looking East)



SECTION THRU DECK CONT. (EASTBOUND)
(Looking East)

DESIGNED	EL
CHECKED	JAS
DRAWN	ABW
CHECKED	EL



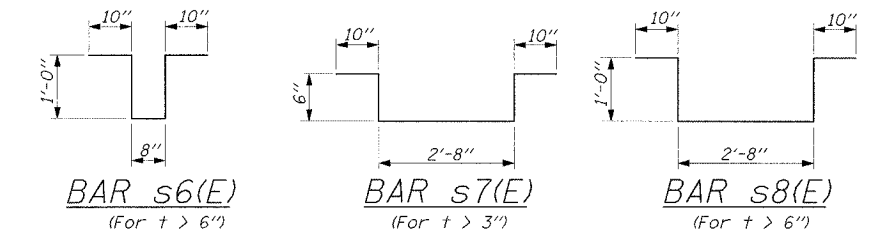
SECTION A-A THRU PARAPET

SCUPPER NOTES:

1. Reinforcement bars designated (E) shall be epoxy coated.
2. Cut longitudinal to clear drainage scupper.

DECK SUPERELEVATIONS	
Sta. 394+55.06	4.5%
Sta. 396+52.06	0.0%
Sta. 398+16.06	4.0%

(Looking East)
Note: P.G.L. is also Axis of Rotation. Transitions are linear between stations.



NOTE:

1. Additional reinforcement is required for fillet heights in excess of 6 inches as shown in the Details. The s6 (E) through s8 (E) bars are detailed in the Bar List; however, the placement of the bars is not shown on the plans. The Contractor shall place the bars between rows of stud shear connectors in accordance with the details shown on this sheet. Bars s7 (E) and s8 (E) are for the fillets at beams 7 and 8 and shall be placed the full length of the bridge.
2. Beam spacing @ Rt L's to center line of beams is as shown from the West Abutment to Field Splice 2 (Bend Point). For spacing from Field Splice 2 to the East Abutment see Sheet SB-12.

**SUPERSTRUCTURE (DECK) II
WILLOW ROAD OVER
DES PLAINES RIVER
F.A.P. RTE. 305
SECTION 2004-088B
COOK COUNTY
STA. 397+76.18
STR. NO. 016-0530
EDWARDS AND KELCEY**