

STATE OF ILLINOIS
DEPARTMENT OF TRANSPORTATION

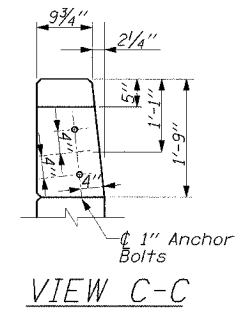
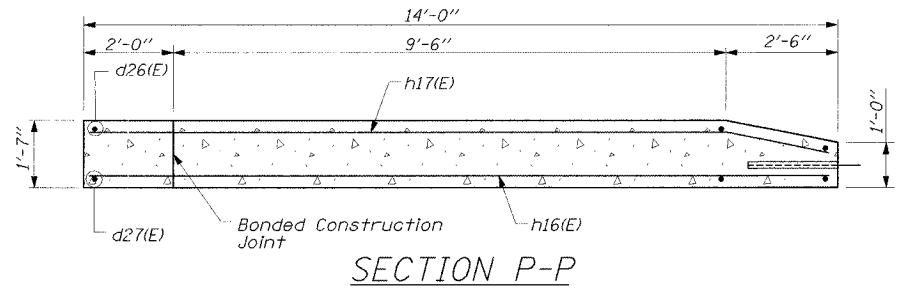
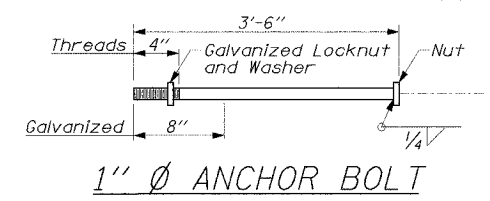
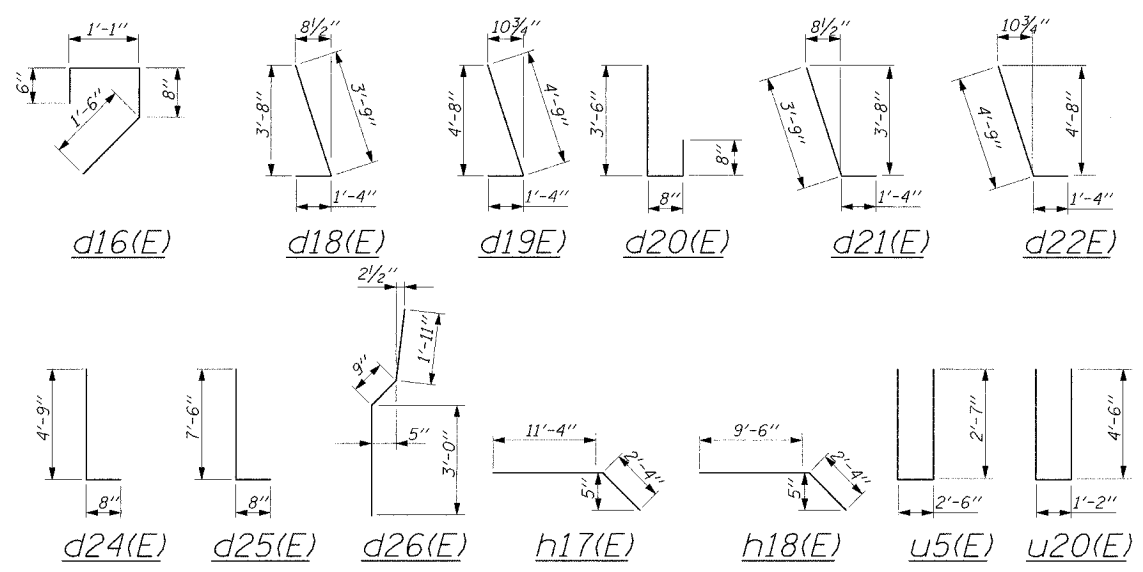
CONTRACT 62829

FAA/RTE. NO.	SECTION	COUNTY	TOTAL SHEETS	SHEET NO.
305	2004-088B	COOK	145	105
FED. ROAD DIST. NO. 1	ILLINOIS	FED. AID PROJECT-		

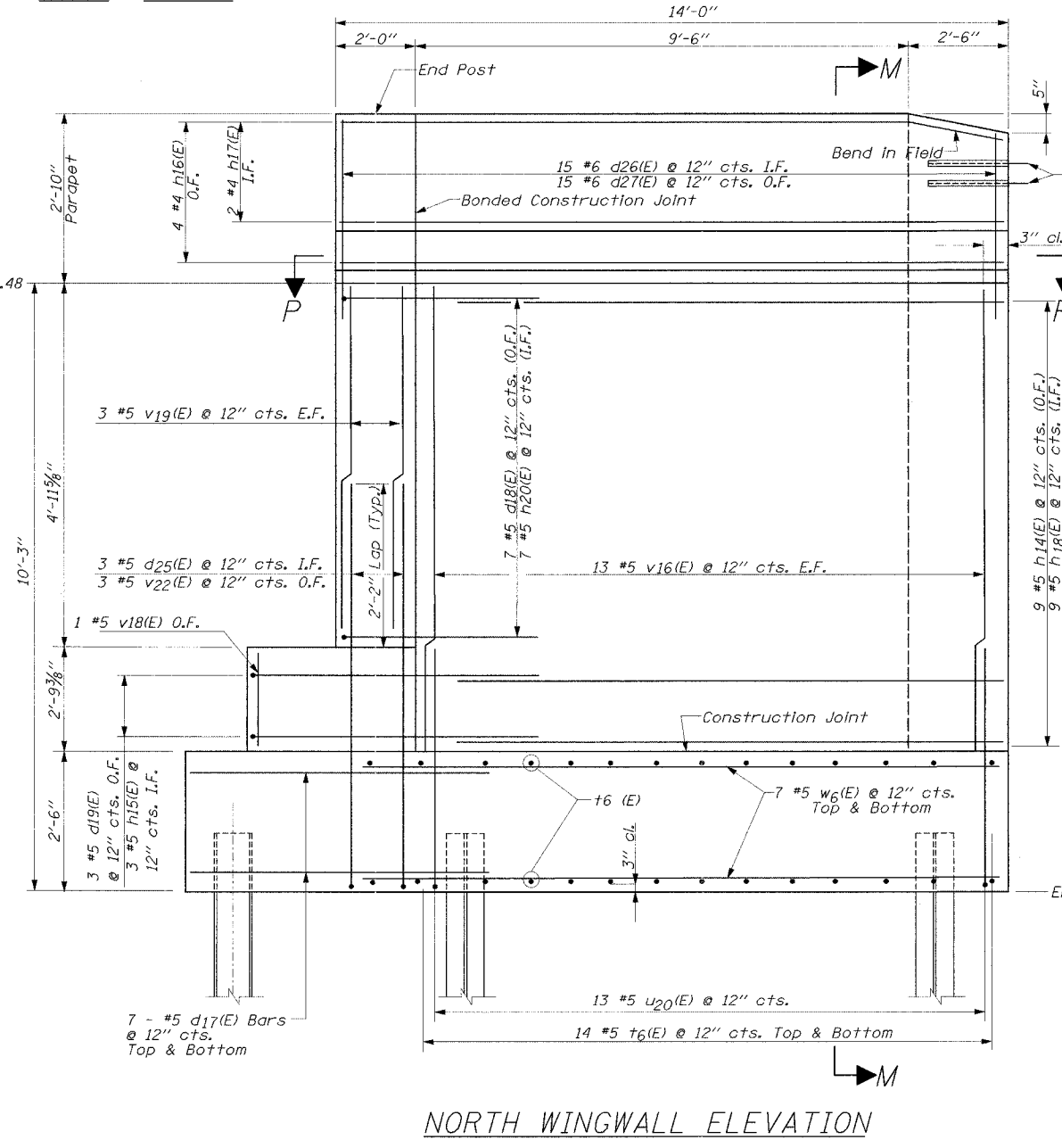
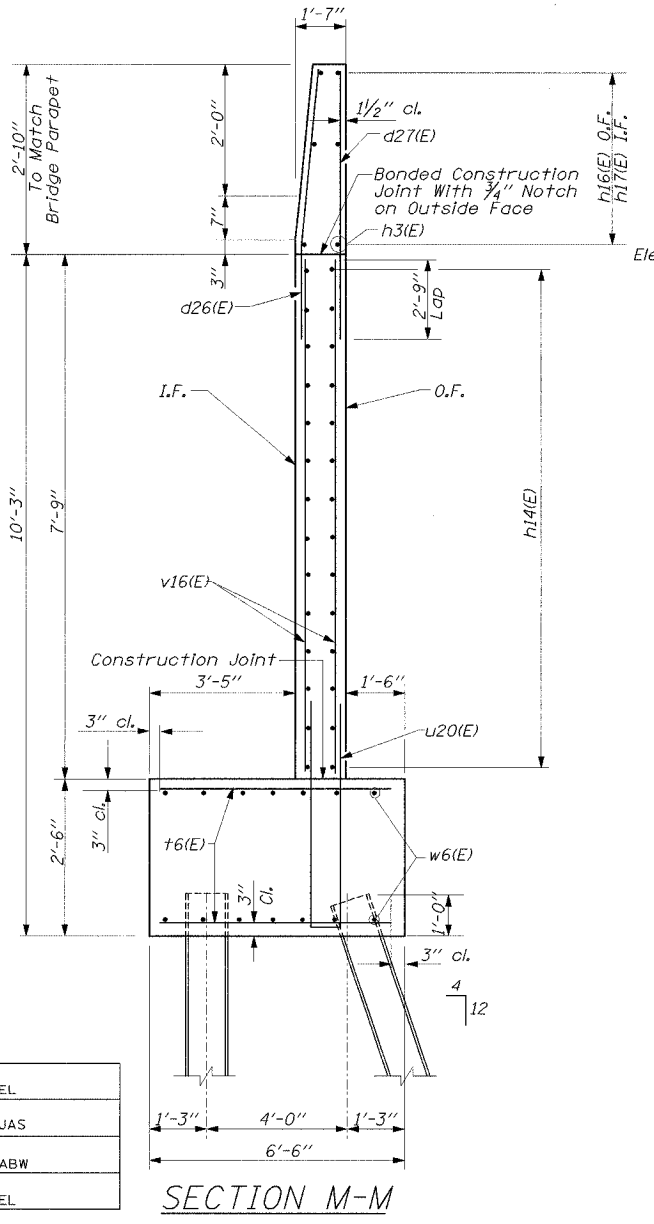
SHEET NO. SB-22
OF SHEETS SB-44

WEST ABUTMENT
BILL OF MATERIAL

Bar	No	Size	Length	Shape
d15(E)	58	#5	3'-6"	—
d16(E)	27	#5	3'-9"	□
d17(E)	28	#5	7'-0"	—
d18(E)	7	#5	5'-1"	↘
d19(E)	3	#5	6'-1"	↘
d20(E)	27	#5	4'-10"	⌒
d21(E)	7	#5	5'-1"	↘
d22(E)	3	#5	6'-1"	↘
d24(E)	54	#5	5'-5"	⌒
d25(E)	6	#5	8'-2"	⌒
d26(E)	30	#6	5'-5"	—
d27(E)	30	#6	5'-5"	—
d31(E)	97	#5	3'-0"	—
h10(E)	25	#5	11'-0"	—
h12(E)	12	#5	17'-0"	—
h13(E)	12	#5	21'-6"	—
h14(E)	18	#5	11'-10"	—
h15(E)	6	#5	4'-9"	—
h16(E)	8	#4	13'-8"	—
h17(E)	4	#4	13'-8"	—
h18(E)	18	#5	11'-10"	↘
h19(E)	25	#5	14'-7"	—
h20(E)	14	#5	3'-9"	—
s1(E)	70	#5	5'-6"	□
s2(E)	70	#5	1'-7"	⌒
t5(E)	54	#5	5'-0"	—
t6(E)	56	#5	6'-0"	—
u5(E)	27	#5	7'-8"	⌒
u20(E)	26	#5	10'-2"	⌒
v16(E)	106	#5	7'-7"	—
v18(E)	2	#5	2'-7"	—
v19(E)	6	#5	4'-10"	—
v22(E)	6	#5	7'-6"	—
w3(E)	12	#5	14'-6"	—
w5(E)	12	#5	10'-11"	—
w6(E)	28	#5	13'-6"	—
Reinforcement Bars Epoxy Coated	Pound	6980		
Concrete Removal	Cu. Yd.	4		
Concrete Structures	Cu. Yd.	65		
Structure Excavation	Cu. Yd.	95		
Furnishing Steel Piles HP 12x53	Foot	678		
Driving Steel Piles	Foot	678		
Test Pile Steel HP12x53	Each	1		
Bar Splacers	Each	103		



WEST ABUTMENT (E) BARS



1" Ø Anchor Bolts
Cost Included with Concrete Superstructure At exit end side of Bridge only. To Connect to Type 5 Traffic Barrier Terminal

MIN. LAP
#5 2'-2"
#6 2'-9"

ABBREVIATIONS
 F.F. - Front Face
 B.F. - Back Face
 E.F. - Each Face
 O.F. - Outer Face
 I.F. - Inner Face
 T - Top
 B - Bottom

NOTE:
End post shall be poured after bridge parapet is in place. Form top surface to match parapet grade

DESIGNED	EL
CHECKED	JAS
DRAWN	ABW
CHECKED	EL

SECTION M-M

NORTH WINGWALL ELEVATION

WEST ABUTMENT
NORTH WINGWALL DETAILS
WILLOW ROAD OVER
DES PLAINES RIVER
F.A.P. RTE. 305
SECTION 2004-088B
COOK COUNTY
STA. 397+76.18
STR. NO. 016-0530

EDWARDS AND KELCEY