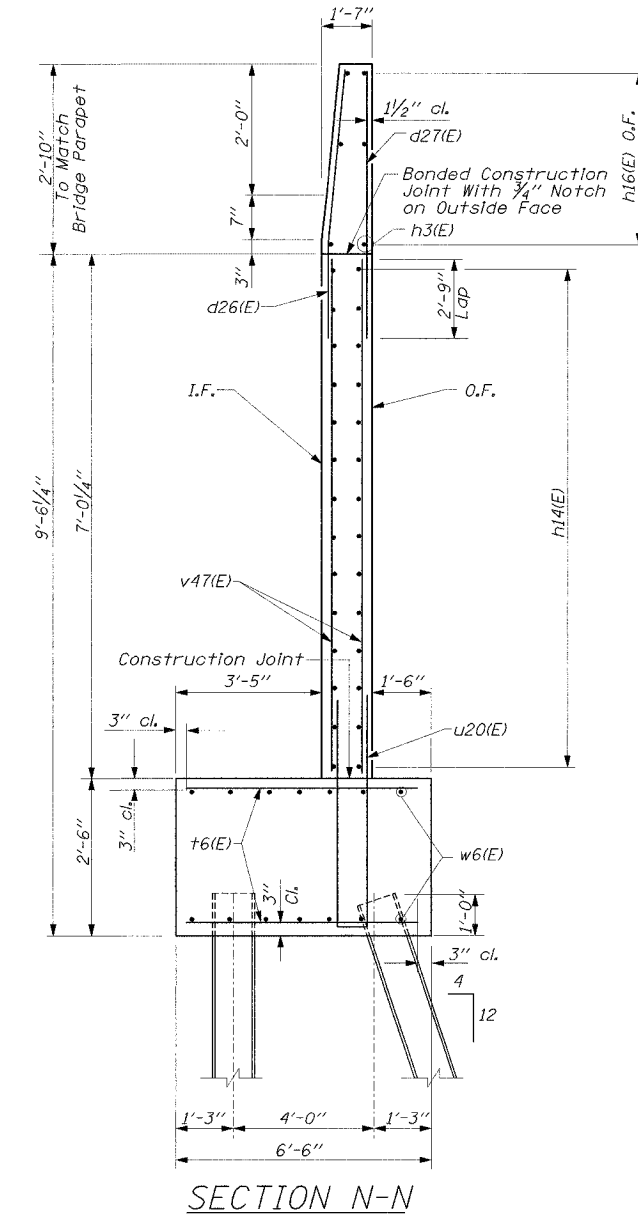
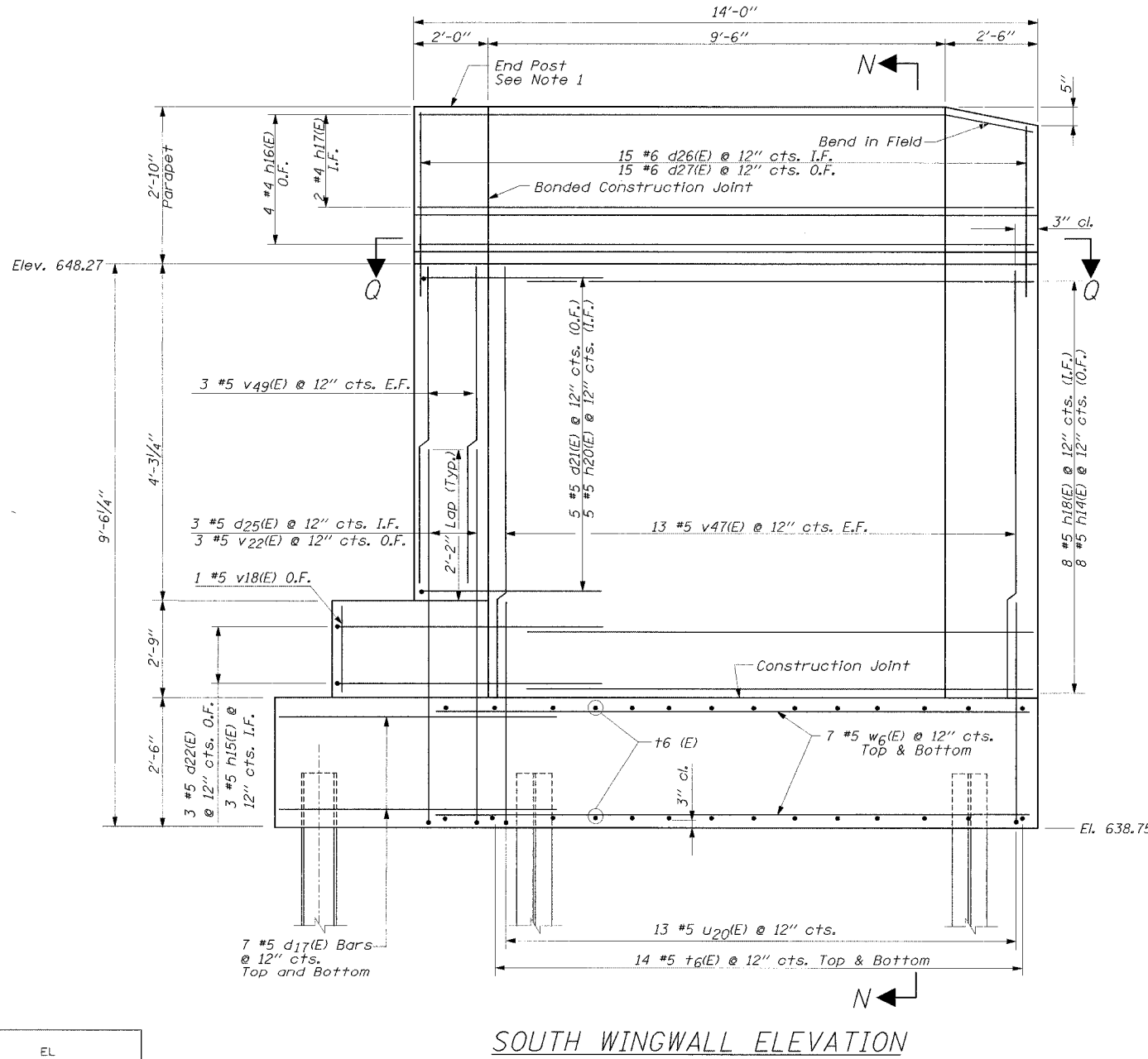


NOTES:

1. End post shall be poured after bridge parapet is in place. Form top surface to match parapet grade.
2. For Bill of Material, See North Wingwall Details.
3. Guardrail is not required at this location.



ABBREVIATIONS

- F.F. - Front Face
- B.F. - Back Face
- E.F. - Each Face
- O.F. - Outer Face
- I.F. - Inner Face
- T - Top
- B - Bottom

MIN. LAP
#5 2'-2"
#6 2'-9"

EAST ABUTMENT
SOUTH WINGWALL DETAILS
WILLOW ROAD OVER
DES PLAINES RIVER
F.A.P. RTE. 305
SECTION 2004-088B
COOK COUNTY
STA. 397+76.18
STR. NO. 016-0530

EDWARDS AND KELCEY

DESIGNED	EL
CHECKED	JAS
DRAWN	ABW
CHECKED	EL

12/28/2004 09:56:56 AM

F:\000095\014\cadd\advance\Contract\Adv\Structural\Des\Notes\Plns25.dwg