

12/28/2004 10:57:27 AM

P:\00000949\01\Road\Adv\Contract\Adv\Structural\Drawings\Plan_Sch\Notes\p1ns26.rvt

STATE OF ILLINOIS
DEPARTMENT OF TRANSPORTATION

NOTE:

End post shall be poured after bridge parapet is in place.
Form top surface to match parapet grade

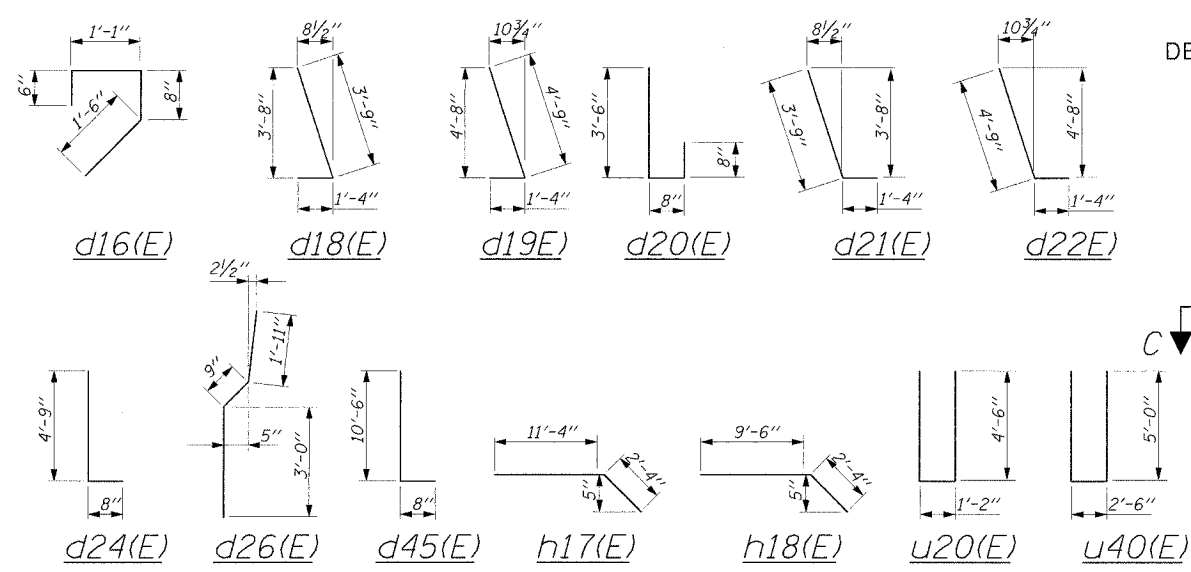
CONTRACT 62829

F.A.L.R.F. NO.	SECTION	COUNTY	TOTAL SHEETS	SHEET NO.
305	2004-088B	COOK	145	109

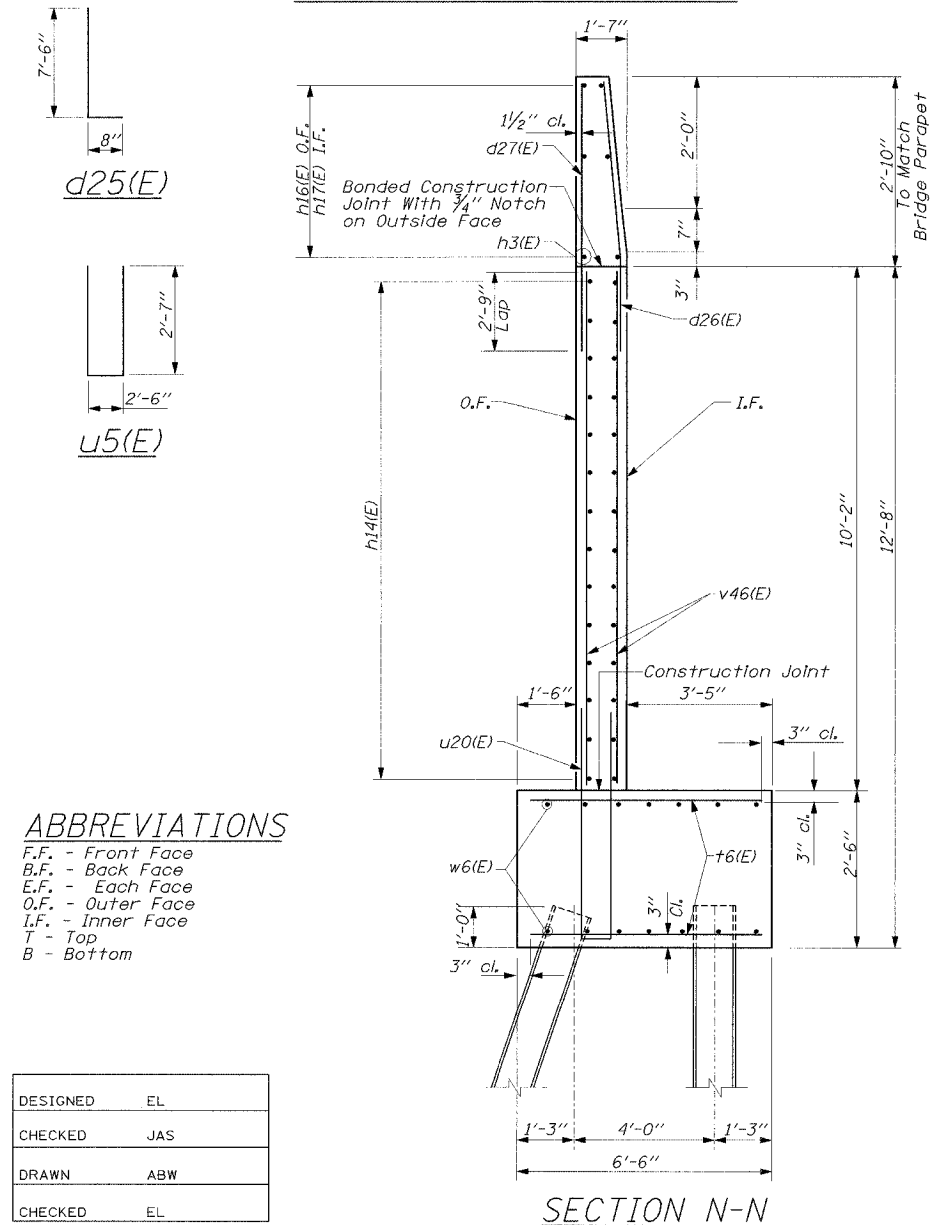
SHEET NO. SB-26
OF SHEETS SB-24

EAST ABUTMENT
BILL OF MATERIAL

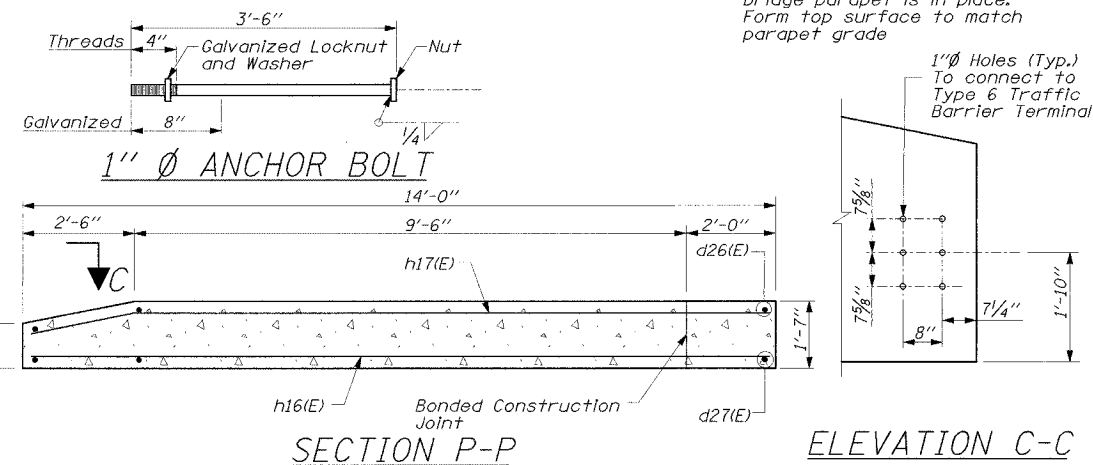
Bar	No	Size	Length	Shape	
d15(E)	58	#5	3'-6"	—	
d16(E)	27	#5	3'-9"	—	
d17(E)	28	#5	7'-0"	—	
d18(E)	5	#5	5'-1"	—	
d19(E)	6	#5	6'-1"	—	
d20(E)	27	#5	4'-10"	—	
d21(E)	5	#5	5'-1"	—	
d22(E)	3	#5	6'-1"	—	
d24(E)	24	#5	5'-5"	—	
d25(E)	33	#5	8'-2"	—	
d26(E)	30	#6	5'-5"	—	
d27(E)	30	#6	5'-5"	—	
d41(E)	97	#5	2'-3"	—	
d45(E)	3	#5	11'-2"	—	
h10(E)	23	#5	11'-0"	—	
h12(E)	12	#5	17'-0"	—	
h13(E)	12	#5	21'-6"	—	
h14(E)	19	#5	11'-10"	—	
h15(E)	9	#5	4'-9"	—	
h16(E)	8	#4	13'-8"	—	
h17(E)	4	#4	13'-8"	—	
h18(E)	19	#5	11'-10"	—	
h19(E)	25	#5	14'-7"	—	
h20(E)	10	#5	3'-9"	—	
s2(E)	70	#5	1'-7"	—	
s41(E)	70	#5	4'-4"	—	
t5(E)	54	#5	5'-0"	—	
t6(E)	56	#5	6'-0"	—	
u5(E)	12	#5	7'-8"	—	
u20(E)	26	#5	10'-2"	—	
u40(E)	15	#5	12'-6"	—	
v18(E)	1	#5	2'-7"	—	
v22(E)	3	#5	7'-6"	—	
v46(E)	56	#5	10'-0"	—	
v47(E)	50	#5	6'-10"	—	
v48(E)	1	#5	5'-8"	—	
v49(E)	12	#5	4'-2"	—	
v52(E)	3	#5	10'-0"	—	
w3(E)	12	#5	14'-6"	—	
w5(E)	12	#5	10'-11"	—	
w6(E)	28	#5	13'-6"	—	
Reinforcement Bars Epoxy Coated				Pound	7130
Concrete Removal				Cu. Yd.	4
Concrete Structures				Cu. Yd.	65
Structure Excavation				Cu. Yd.	125
Furnishing Steel Piles HP 12x53				Foot	530
Driving Steel Piles				Foot	530
Test Pile Steel HP12x53				Each	1
Bar Splicers				Each	103



EAST ABUTMENT (E) BARS

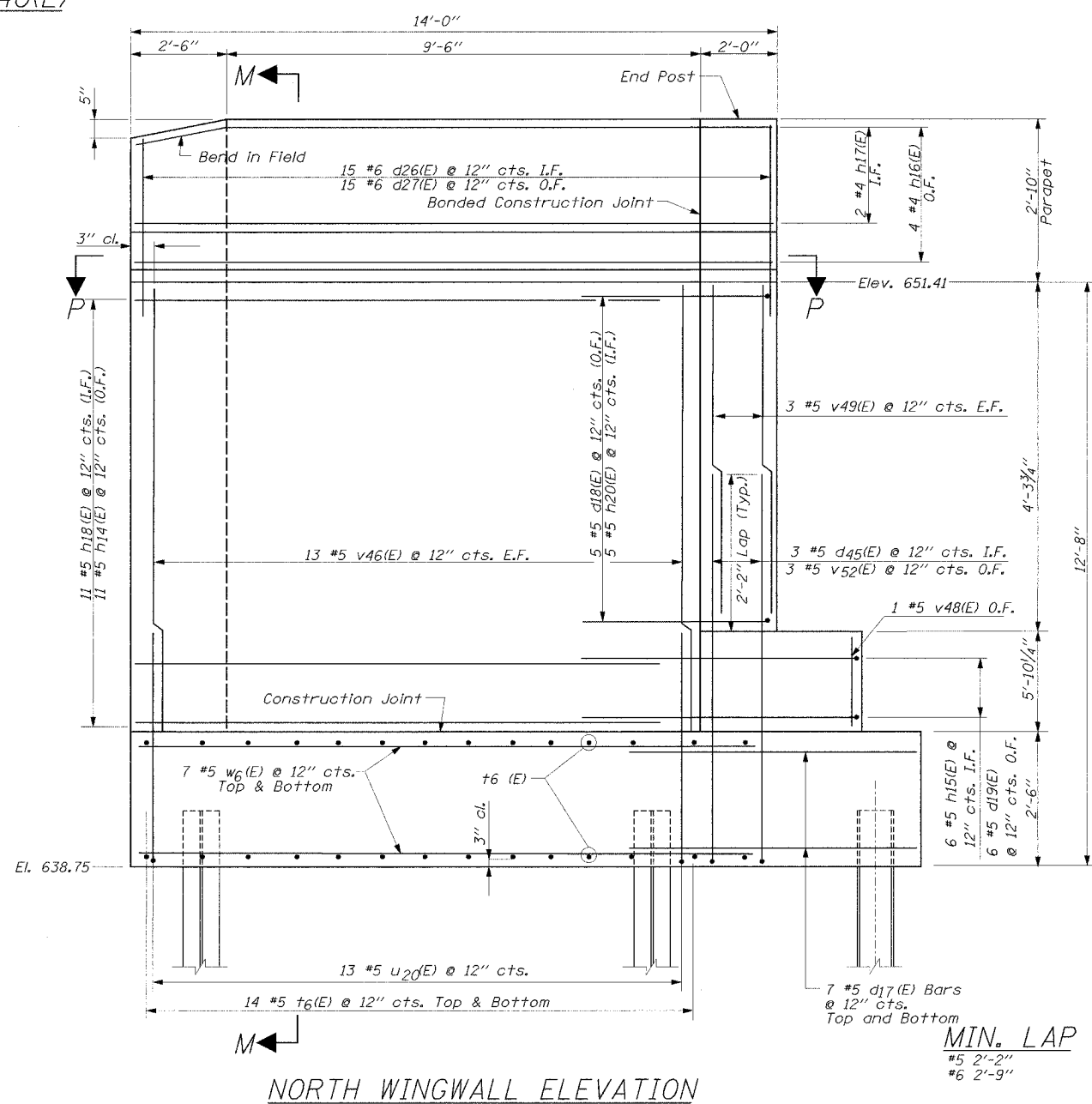


SECTION N-N



SECTION P-P

ELEVATION C-C



NORTH WINGWALL ELEVATION

ABBREVIATIONS

- F.F. - Front Face
- B.F. - Back Face
- E.F. - Each Face
- O.F. - Outer Face
- I.F. - Inner Face
- T - Top
- B - Bottom

DESIGNED	EL
CHECKED	JAS
DRAWN	ABW
CHECKED	EL

EAST ABUTMENT
NORTH WINGWALL DETAILS
WILLOW ROAD OVER
DES PLAINES RIVER
F.A.P. RTE. 305
SECTION 2004-088B
COOK COUNTY
STA. 397+76.18
STR. NO. 016-0530

EDWARDS AND KELCEY

MIN. LAP
#5 2'-2"
#6 2'-9"